



**VICTOR GARCIA**  
**AIRE ACONDICIONADO, S.R.L.**  
 Servicio de refrigeración en General \*Aires Acondicionados  
 Equipos\*Repuestos y Materiales\*Venta al por Mayor y Detalle  
 Av. Independencia KM 9, Edificio Nordesa III, No. 1976, Santo Domingo, Rep.Dom.  
 Tel.(809)535-5431,(809)274-5807,(829)535-5431, Fax.(809)508-0325  
 RNC: 1-30-12094-3

**COTIZACION**

CLIENTE: JUNTA CENTRAL ELECTORAL (JCE)  
 RNC: 401007541  
 ATENCION: DEPARTAMENTO DE COMPRAS  
 SOLICITUD NO: 2019-002016

10/09/2019  
 DOC.NO. 4228  
 REP:2241

FORMA DE PAGO: 70% CON LA ORDEN Y 30% CREDITO 30 DIAS

TIEMPO DE ENTREGA DEL PROYECTO: 1 SEMANA

ITEM	DESCRIPCION	CANT.	UNIDAD	PRECIO UNIT.	SUB-TOTAL
1.00	Aire Acondicionado de 5 Toneladas, Ductible, Monofasico, 220V. Ref: R-410A Inverter Eficiencia 18 Marca Air Max con instalacion y material gastable incluido Condensador y Manejadora en Cobre. Incluye: (Tuberia Rigida, Trampa de Aceite, Termostato, Ducteria Nueva en P3, Rejillas de suministro, Rejillas de retorno con porta filtro, Desmonte de Ducteria y Unidad de A/A Existente, Base para Condensador). Todo Terminado.	1	UNIDAD	249,576.27	249,576.27
2.00	Aire Acondicionado de 3 Toneladas, Ductible, Monofasico, 220V. Ref: R-410A Inverter Eficiencia 18 Marca Air Max con instalacion y material gastable incluido Condensador y Manejadora en Cobre. Incluye: (Tuberia Rigida, Trampa de Aceite, Termostato, Ducteria Nueva en P3, Rejillas de suministro, Rejillas de Retorno con porta filtro, Base para Condensador). Todo Terminado.	1	UNIDAD	182,203.38	182,203.38
3.00	Aire Acondicionado de 2 Toneladas Inverter, Tipo Cassette, R-410, Eficiencia 18 Marca Ciac Carrier, Con instalacion y Material Gastable incluido. Condensador en Cobre. Incluye: (Tuberia Rigida, Base para condensador)	1	UNIDAD	110,169.49	110,169.49
<b>3 AÑOS DE GARANTIA EN PIEZAS Y SERVICIOS</b>					

**SUB-TOTAL GENERAL: 541,949.14**

**ITBIS 18% 97,550.85**

**TOTAL GENERAL: 639,499.99**

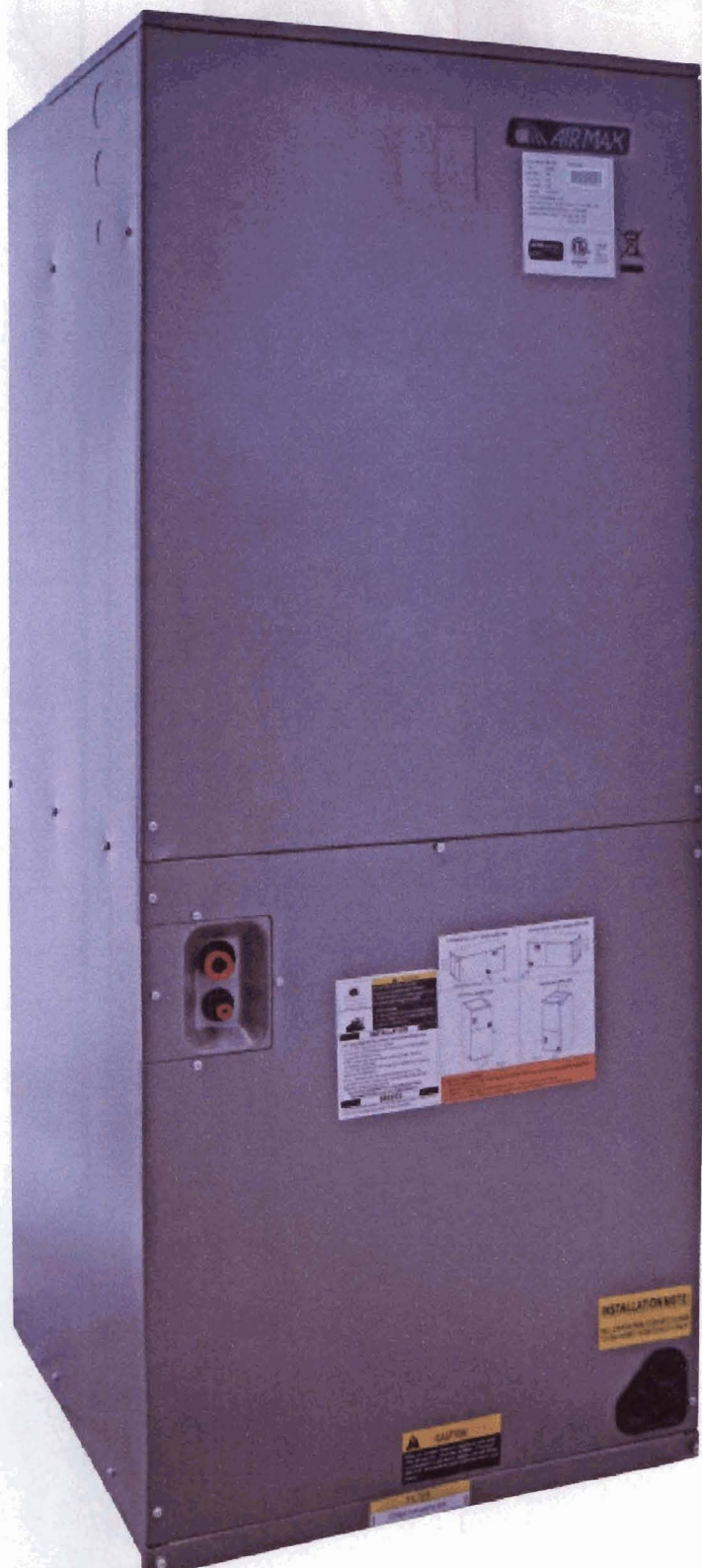


*Victor M. Garcia*  
 Ing. Victor M. Garcia  
 Presidente

**INVERTER**

# INVERTER 18 SEER

Ultra Eficiente  
Equipo de estructura resistente y duradera  
compatible con todas las unidades  
interior y termostato a 24v



# AHMI

- 1 - Resistente y duradera
- 2 - Comunicación de 24v
- 3 - Fan motor EMC de bajo consumo
- 4 - Valvula de expansión TVX



**AHORRA MAX!**



# ESPECIFICACIONES

Sale Model		AHMI24-C2	AHMI36-C2B	AHMI36-C2	AHMI48-C2	AHMI60-C2	
Indoor motor	Type	ECM	ECM	ECM	ECM	ECM	
	Rated HP	1/3	1/2	1/2	3/4	3/4	
	Rated RPM	r/min	1050	1050	1050	1050	
	FLA	2.8	4.1	4.1	6.0	6.0	
Indoor fan	material	galvanized plate	galvanized plate	galvanized plate	galvanized plate	galvanized plate	
	Type	centrifugal	centrifugal	centrifugal	centrifugal	centrifugal	
	Diameter	inch	10-5/8	11	11	11	
	Height	inch	8	10-5/8	10-5/8	10-5/8	
Indoor coil	Number of rows	4*2	4*2	4*2	4*2	5*2	
	Tube outside dia. and type	7mm/innergroove tube	7mm/innergroove tube	7mm/innergroove tube	7mm/innergroove tube	7mm/innergroove tube	
	Fin spacing /thickness/type	mm/mm	1.6/0.095/hydrophilic aluminium	1.6/0.095/hydrophilic aluminium	1.6/0.095/hydrophilic aluminium	1.6/0.095/hydrophilic aluminium	
	Tube pitch(a)x row pitch(b)	mm	13.37/21	13.37/21	13.37/21	13.37/21	
Indoor limit value of static pressure and air flow		Pa/CFM	25/800	37.5/1120	37.5/1180	50/1580	50/1700
Indoor sound level (sound power level)		dB(A)	63	66	65	67	68
Metering device	Throttle type	TXV	TXV	TXV	TXV	TXV	
	Model number	3TR	3TR	3TR	4TR	5TR	
Electrical Data	Voltage-Phase-Hz	V-Ph-Hz	208/230V 1Ph 60Hz	208/230V 1Ph 60Hz	208/230V 1Ph 60Hz	208/230V 1Ph 60Hz	208/230V 1Ph 60Hz
	Minimum Circuit Ampacity		3.5	5.1	5.1	7.5	7.5
	Max. Overcurrent Protection		15	15	15	15	15
	Min/Max Volts		187 / 253	187 / 253	187 / 253	187 / 253	187 / 253
Indoor unit	Dimension (W*H*D)	mm	500x1180x550	500x1180x550	580x1385x810	580x1385x810	580x1385x810
		inch	19-5/8"x48-1/2"x21-5/8"	19-5/8"x48-1/2"x21-5/8"	22"x54-1/2"x24"	22"x54-1/2"x24"	22"x54-1/2"x24"
	Packing (W*H*D)	mm	644x1205x567	644x1205x567	704x1410x827	704x1410x827	704x1410x827
		inch	22-3/5"x47-4/5"x22-7/10"	22-3/5"x47-4/5"x22-7/10"	27-7/10"x55-4/5"x25"	27-7/10"x55-4/5"x25"	27-7/10"x55-4/5"x25"
	Net/Gross weight	kg	54/60	57/63	74/82	74/82	77/85
		lbs	119/132	126/139	161/178	162/180	170/188
Refrigerant piping Liquid side/ Gas side		inch	3/8 3/4	3/8 3/4	3/8 3/4	3/8 7/8	3/8 7/8
Shipping per STD40HQ			154	154	184	184	184



## INVERTER 18 SEER

Ultra Eficiente  
Equipo de estructura resistente y duradera  
compatible con todas las unidades  
interior y termostato a 24v

INVERTER

# INVERTER 18 SEER

Utilizamos tecnología de velocidad variable para lograr 18 SEER Eficiente, cuanto mayor sea el SEER, mayor será la Eficiencia-y menor será el costo de operación.

- 1- Aspas del ventilador de accionamiento directo
- 2- Serpentin de alta eficiencia
- 3- Compartimiento del compresor Insulado
- 4- Compresor variable Inverter de alta eficiencia
- 5- Tecnología de control de aprendizaje autónomo
- 6- Fan motor DC
- 7- Tubería de alta caliente



# CMVI

 **AIR MAX**

AHORRA MAX!



# ESPECIFICACIONES

Model			CMV124-C2	CMV136-C2	CMV148-C2	CMV160-C2
Cooling	Capacity	Btu/h	24900	35200	48000	58000
	EER	Btu/h.W	12.5	12.2	12.5	11.7
	SEER	Btu/h.W	18	18	18	18
Compressor	Type		Rotary	Rotary	Rotary	Rotary
	Supplier		Mitsubishi	Mitsubishi	GMCC	GMCC
	RLA		13.5	18.5	23.5	27.2
	LRA		45	45	52	52
Fan Motor	Type		PSC	PSC	DC	DC
	Rated HP		1/8	1/6	1/3	1/3
	Capacitor	uF	6	6	/	/
	Rated RPM	r/min	1075	825	1050	1050
Outdoor Fan	FLA		0.8	1	2.5	2.5
	material		Metal	Metal	Metal	Metal
	Type		Axial flow	Axial flow	Axial flow	Axial flow
	Diameter	inch	23-5/8	23-5/8	23-5/8	23-5/8
	Height	inch	2-3/4	4-1/2	4-1/2	4-1/2
Condenser Coil	Air flow	CFM	2400	2950	4100	4100
	Number of rows		1	2	2	2
Electrical Data	Tube outside dia	mm(inch)	7(9/32)	7(9/32)	7(9/32)	7(9/32)
	Voltage-Phase-Hz	V-Ph-Hz	208/230V-1Ph-60Hz	208/230V-1Ph-60Hz	208/230V-1Ph-60Hz	208/230V-1Ph-60Hz
	Minimum Circuit Ampacity		17.7	24.2	31.9	36.5
	Max. Overcurrent Protection		30	40	50	60
Outdoor sound level (sound power level)	Min/Max Volts		187 / 253	187 / 253	187 / 253	187 / 253
			75	77	79	79
Outdoor unit	Dimension (W*H*D)	mm	740x633x740	740x633x740	740x643x740	740x643x740
		inch	29-1/8x24-15/16x29-1/8	29-1/8x24-15/16x29-1/8	29-1/8x33-3/16x29-1/8	29-1/8x33-3/16x29-1/8
	Packing (W*H*D)	mm	768x667x768	768x667x768	768x677x768	768x677x768
		inch	30-1/5x26-1/4x30-1/5	30-1/5x26-1/4x30-1/5	30-1/5x34-1/2x30-1/5	30-1/5x34-1/2x30-1/5
	Net/Gross weight	kg	61/65	67/71	87/92	87/92
Refrigerant system	lbs		134/143	148/157	192/203	192/203
	Liquid side/ Gas side	inch	3/8 / 3/4	3/8 / 3/4	3/8 / 7/8	3/8 / 7/8
	Factory charge R410A	oz	78	114	152	163
Operating temperatures	Metering device		/	/	/	/
		°F	50-118	50-118	50-118	50-118
	Maximum line length	Feet	100	100	100	100
	Maximum elevation difference	Feet	50	50	50	50
Shipping per STD40HQ			180	180	135	135



## INVERTER 18 SEER

Ultra Eficiente  
Equipo de estructura resistente y duradera  
compatible con todas las unidades  
interior y termostato a 24v

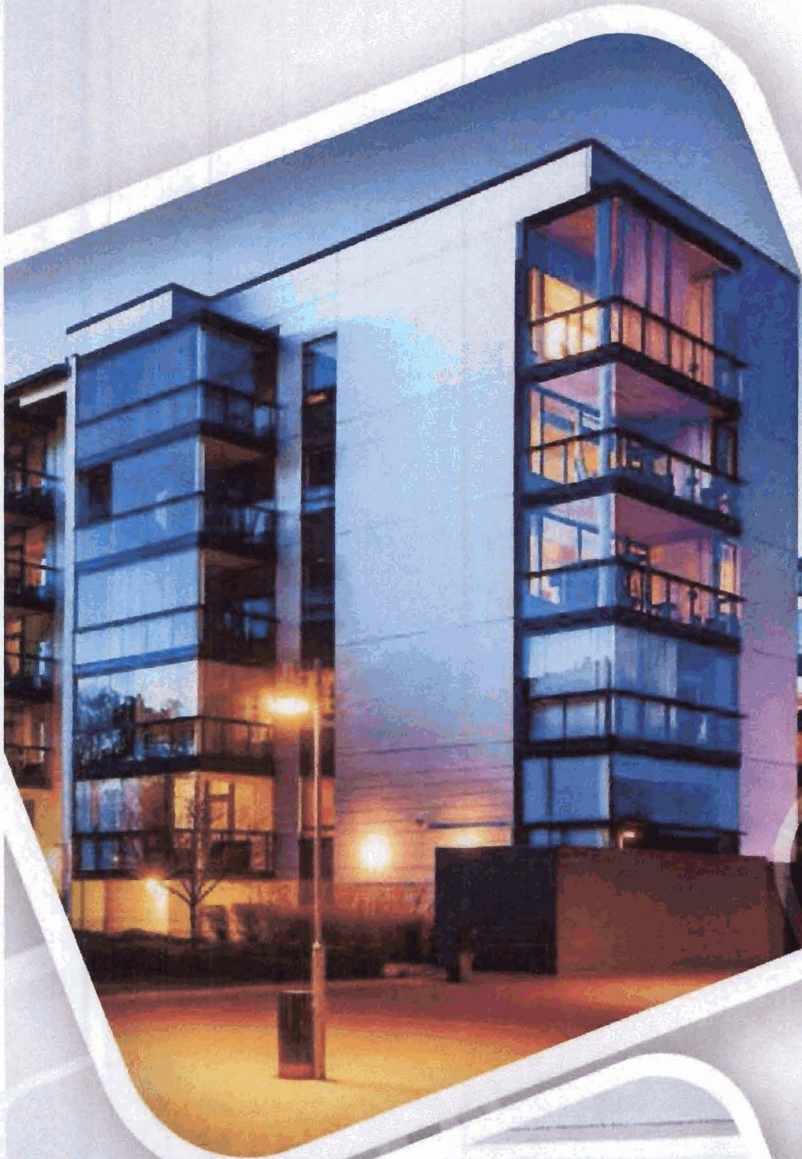


# CIAC<sup>®</sup>

Comfort and intelligence in air conditioning<sup>®</sup>

## Freedom Series

Inverter Flexible Combination System



## FREEDOM HORIZONTAL DISCHARGE INVERTER HEAT PUMP

### Features and Benefits:

- Inverter control
- Heavy Gauge Steel Cabinet
- Sound Levels down to 56 DB
- Low Ambient Cooling down to 5 deg °F
- R410A Refrigerant
- Multi-point Diagnostics



AHRI CERTIFIED



R-410A REFRIGERANT



Outdoor Unit HP Inverter	CM43AX018-H3H1H	CM43AX024-H3H1H	CM43AX030-H3H1H	CM43AX036-H3H1H	CM43AX042-H3H1H	CM43AX048-H3H1H	CM43AX060-H3H1H
System Type	Heat Pump						
Power Supply	208/230V / 60Hz	208/230V / 60Hz	208/230V / 60Hz	208/230V / 60Hz	208/230V / 60Hz	208/230V / 60Hz	220/240V / 60Hz
Rated Current Cooling	Amps 11.5	17.5	18.1	21.5	22.0	32.5	35.0
Rated Current Heating	Amps 11.1	15.4	19.0	22.5	22.7	32.2	34.0
Cooling Capacity (Min-Max)*	Btu/h (5,459-18,765)	23,800 (8,188-29,002)	28,200 (8,871-31,390)	34,000 (10,920-39,250)	39,238 (11,260-39,238)	47,768 (20,472-50,498)	55,900 (22,100-55,900)
Heating Capacity (Min-Max)*	Btu/h (4,776-22,178)	27,200 (8,188-32,414)	31,200 (8,188-33,778)	40,800 (9,890-48,490)	44,356 (12,283-51,160)	54,592 (17,742-61,416)	62,700 (17,700-62,700)
SEER/EER	18	18	18	18	18	18	18
HSPF/COP	9.5/3.0	10.0/3.4	10.0/3.7	10.0/3.2	10.0/2.9	10.0/3.3	10/3.39
Compressor Type	DC Inverter-driven Twin rotary						
Sound Pressure Level	"db(A)" 56	57	58	63	61	59	63
Unit Dimensions (LxWxH)	inches 37.6 x 27.6 x 15.6	38.6 x 31.1 x 16.8	38.6 x 31.1 x 16.8	43.6 x 43.3 x 17.3	37.7 x 53.1 x 16.2	37.7 x 53.1 x 16.2	42.7 x 53.7 x 16.7
Package Dimensions (LxWxH)	inches 40.5 x 29.5 x 18.0	42.6 x 33.7 x 19.2	42.6 x 33.7 x 19.2	45.6 x 48.6 x 19.4	41.1 x 59.1 x 17.8	41.1 x 59.1 x 17.8	45 x 59.3 x 18.8
Net / Gross Weight	lbs 104/110	148/159	157/168	203/221	208/232	232/254	267/293
Refrigerant / Charge	oz. R410A / 49.4	R410A / 77.6	R410A / 84.7	R410A / 123.5	R410A / 130.5	R410A / 141.1	R410A / 194
Line Set Size (Liquid - Suction)	inches 1/4" - 1/2" Flared	3/8" - 5/8" Flared	3/8" - 5/8" Flared	3/8" - 5/8" Flared	3/8" - 5/8" Flared	3/8" - 5/8" Flared	3/8" - 5/8" Flared
Pre-Charge	Feet 25	25	25	25	25	25	25
Max. Line Run	Feet 65	100	100	100	165	165	165
Max. Elevation	Feet 50	66	50	66	100	100	100
MCA	Amps 11	17	16	21	22	32	32
MOCB/Breaker Size	Amps 15	20	20	25	25	40	40
Ambient Cooling Operating Range	°F						5 - 118.4
Ambient Heating Operating Range	°F						14 - 75.2

All models have AHRI & ETL Certifications except 60K models. CE Certification for all 60K models.

\*Based on Cassette Indoor Unit combination



## FREEDOM CASSETTE INVERTER

### Features and Benefits:

- 4 - way Discharge Air
- Multi Speed Fan
- Remote Control Lockout
- Swing Louver
- Cleanable Air Filter
- Decorative Discharge Air Grille (sold separately)
- IR Remote Control and Tether Wired Controller
- Power Failure Recovery
- Internal Condensate Drain Pump
- Sentry Float Switch



AHRI CERTIFIED



R-410A REFRIGERANT



System Type	Heat Pump	Panel
Power Supply	208/230V / 60Hz	208/230V / 60Hz
Cooling Capacity (Min-Max)*	Btu/h (5,459-18,765)	23,800 (8,188-29,002)
Heating Capacity (Min-Max)*	Btu/h (4,776-22,178)	27,200 (8,188-32,414)
Airflow (max)	CFM 447	765
Sound Pressure Level (HMMHLA)	db (A) 47/46/44/37	47/46/42/38
Unit Dimensions (LxWxH)	inches 23.5 x 23.5 x 9.4	36.1 x 33.1 x 9.4
Package Dimensions (LxWxH)	inches 30.4 x 28.9 x 11.8	37.9 x 37.9 x 12.8
Net / Gross Weight	lbs 44/59	57/71
Line Set Size (Liquid - Suction)	inches 1/4" - 1/2" Flared	3/8" - 5/8" Flared
Unit Dimensions (LxWxH)	inches 26.4 x 26.4 x 2.0	37.4 x 37.4 x 2.4
Package Dimensions (LxWxH)	inches 30.0 x 30.0 x 4.1	40.5 x 41.1 x 5.1
Net / Gross Weight	lbs 8/11	15/24

## FREEDOM SLIM DUCT EVAPORATOR

### Features and Benefits:

- Medium Static Pressure Capability
- Slim Line Construction 7-7/8" high
- Flexible Return Air From Bottom or Rear
- Internal Condensate Drain Pump
- Sentry Float Switch
- Environmentally Safe R-410A Refrigerant

AHRI CERTIFIED



R-410A REFRIGERANT



Outdoor Unit HP Inverter	CC43AX018-E3H1H	CC43AX024-E3H1H	CC43AX030-E3H1H	CC43AX036-E3H1H	CC43AX042-E3H1H	CC43AX048-E3H1H	CC43AX060-E3H1H
System Type	Heat Pump						
Power Supply	208/230V / 60Hz	208/230V / 60Hz	208/230V / 60Hz	208/230V / 60Hz	208/230V / 60Hz	208/230V / 60Hz	220/240 / 60Hz
Cooling Capacity (Min-Max)*	Btu/h 17,100 (5,459-19,789)	23,800 (8,188-27,978)	28,200 (8,871-31,390)	34,000 (10,920-39,250)	39,238 (12,283-42,650)	47,798 (20,472-49,474)	61,400 (23,200-61,400)
Heating Capacity (Min-Max)*	Btu/h 18,900 (4,776-23,201)	27,200 (8,188-30,708)	31,200 (8,188-33,778)	40,800 (3,890-48,490)	44,356 (13,306-52,896)	54,532 (17,742-58,004)	68,200 (18,000-68,200)
Airflow (max)	CFM 589	824	824	1,177	1,177	1,471	1,706
Sound Pressure Level (H/MH/MLL)	db (A) 40/39/36/28	47/46/44/40	47/46/44/40	53/52/48/44	53/52/48/44	55/53/49/45	59/54/49
Unit Dimensions (LxWxH)	inches 40.8 x 10.8 x 28.4	50.4 x 10.6 x 22.0	50.4 x 10.6 x 22.0	48.3 x 11.4 x 30.5	48.3 x 11.4 x 30.5	52.8 x 13.8 x 29.5	52.8 x 13.8 x 29.5
Package Dimensions (LxWxH)	inches 44.2 x 12.7 x 31.4	53.1 x 11.1 x 23.5	53.1 x 11.1 x 23.5	52.7 x 12.0 x 34.5	52.7 x 12.0 x 34.5	56.0 x 17.9 x 33.0	56.0 x 17.0 x 33.0
Net / Gross Weight	lbs 73/84	75/86	75/86	101/117	101/117	124/143	126/157
Line Set Size (Liquid - Suction)	inches 1/4" - 1/2" Flared	3/8" - 5/8" Flared					

All models have AHRI & ETL Certifications except 60K models. CE Certification for all 60K models.

## FREEDOM FLOOR CEILING INVERTER

### Features and Benefits:

- 4-way Discharge Air
- Multi Speed Fan
- IR Remote Control
- Tether Wired Controller
- Swing Louver
- Remote Control Lock
- Power Failure Recovery



AHRI CERTIFIED



R-410A REFRIGERANT



Outdoor Unit HP Inverter	CF43AX018-M3H1H	CF43AX024-M3H1H	CF43AX030-M3H1H	CF43AX036-M3H1H	CF43AX042-M3H1H	CF43AX048-M3H1H	CF43AX060-M3H1H
System Type	Heat Pump						
Power Supply	208/230V / 60Hz	208/230V / 60Hz	208/230V / 60Hz	208/230V / 60Hz	208/230V / 60Hz	208/230V / 60Hz	220/240V / 60Hz
Cooling Capacity (Min-Max)*	Btu/h 17,100 (5,459-19,789)	23,800 (8,188-27,978)	28,200 (8,871-31,390)	34,000 (10,920-39,250)	39,238 (12,283-42,650)	47,798 (20,472-50,498)	59,300 (21,000-59,300)
Heating Capacity (Min-Max)*	Btu/h 18,100 (4,776-23,201)	27,200 (8,188-30,708)	31,200 (8,188-33,778)	40,800 (3,890-48,490)	44,356 (13,306-52,896)	54,532 (17,742-61,416)	68,200 (18,700-68,200)
Airflow (max)	CFM 589	706	893	1,118	1,118	1,354	1,471
Sound Pressure Level (H/MH/MLL)	db (A) 44/42/38/32	49/48/46/40	49/46/44/38	54/53/51/46	55/53/51/46	59/55/50/46	59/52/46
Unit Dimensions (LxWxH)	inches 40.8 x 10.5 x 28.4	50.4 x 10.6 x 22.0	50.4 x 10.6 x 22.0	48.3 x 11.4 x 30.5	48.3 x 11.4 x 30.5	52.8 x 13.8 x 29.5	67 x 9.7 x 27.6
Package Dimensions (LxWxH)	inches 44.2 x 12.7 x 31.3	53.1 x 11.1 x 23.5	53.1 x 11.1 x 23.5	52.7 x 12.0 x 34.5	52.7 x 12.0 x 34.5	56.0 x 17.9 x 33.0	72 x 13.6 x 32.6
Net / Gross Weight	lbs 73/84	75/86	75/86	101/117	101/117	123/143	130/150
Line Set Size (Liquid - Suction)	inches 1/4" - 1/2" Flared	3/8" - 5/8" Flared					





The photos of products on the cover are for reference only, the actual appearance of certain product may be different.

Authorized Dealer:



**Carrier InterAmerica Corporation**  
Miami, Florida USA  
[www.ciac-comfort.com](http://www.ciac-comfort.com)