



JUNTA CENTRAL ELECTORAL

Página 1 de 2

02 de febrero de 2022

PRESENTACIÓN DE OFERTA

Señores

JUNTA CENTRAL ELECTORAL

Nosotros, los suscritos, declaramos que:

- a) Hemos examinado y no tenemos reservas a los Pliegos de Condiciones para la Licitación de referencia, incluyendo las siguientes enmiendas/ adendas realizadas a los mismos:
- b) De conformidad con los Pliegos de Condiciones y según el plan de entrega especificado en el Programa de Suministros/ Cronograma de Ejecución, nos comprometemos a suministrar los siguientes bienes y servicios conexos, o ejecutar los siguientes servicios u Obras:

2	CAMARA FOTOGRAFICA NIKON D850
3	LENTE TOKINA AT-X 24-70 MM F/2,8
3	LENTE TAMRON SP 70-200 F/2,8
2	FLASH NIKON SB-500 AF
2	BATERIA NIKON EN-EL15C
2	BATERIA GRIP NIKON MB-D18
2	TARJETA SD SANDISK 128GB EXTREME PRO
- c) Si nuestra oferta es aceptada, nos comprometemos a obtener una garantía de fiel cumplimiento del Contrato, de conformidad con los Pliegos de Condiciones de la Licitación, por el importe del **CUATRO POR CIENTO (4%)** del monto total de la adjudicación, para asegurar el fiel cumplimiento del Contrato.
- d) Para esta licitación no somos partícipes en calidad de Oferentes en más de una Oferta, excepto en el caso de ofertas alternativas, de conformidad con los Pliegos de Condiciones de la Licitación.
- e) Nuestra firma, sus afiliadas o subsidiarias, incluyendo cualquier subcontratista o proveedor de cualquier parte del Contrato, no han sido declarados inelegibles por el Comprador para presentar ofertas.

- f) Entendemos que esta Oferta, junto con su aceptación por escrito que se encuentra incluida en la notificación de adjudicación, constituirán una obligación contractual, hasta la preparación y ejecución del Contrato formal.
- g) Entendemos que el Comprador no está obligado a aceptar la Oferta evaluada como la más baja ni ninguna otra de las Ofertas que reciba.

ANGEL BERNAL CONTRERA en calidad de GERENTE DE VENTAS debidamente autorizado para actuar en nombre y representación de AMERICAN BUSINESS MACHINE (ABM).

Firma 
Sello 



JUNTA CENTRAL ELECTORAL
OFERTA TECNICA

02 de febrero de 2022

NOMBRE DEL OFERENTE: ABM - AMERICAN BUSINESS MACHINE

ITEM	Descripción del Bien, Servicio u Obra	Unidad de medida ¹	Cantidad ²			
1	CAMARA FOTOGRAFICA NIKON D850	Unidad	2	GARANTIA 12 MESES	ENTREGA 7 DIAS	CREDITO 30 DIAS
2	LENTE TOKINA AT-X 24-70 MM F/2,8	Unidad	3	GARANTIA 12 MESES	ENTREGA 7 DIAS	CREDITO 30 DIAS
3	LENTE TAMRON SP 70-200 F/2,8	Unidad	3	GARANTIA 12 MESES	ENTREGA 7 DIAS	CREDITO 30 DIAS
4	FLASH NIKON SB-500 AF	Unidad	2	GARANTIA 12 MESES	ENTREGA 7 DIAS	CREDITO 30 DIAS
5	BATERIA NIKON EN-EL15C	Unidad	2	GARANTIA 12 MESES	ENTREGA 7 DIAS	CREDITO 30 DIAS
6	BATERIA GRIP NIKON MB-D18	Unidad	2	GARANTIA 12 MESES	ENTREGA 7 DIAS	CREDITO 30 DIAS
7	TARJETA SD SANDISK 128GB EXTREME PRO	Unidad	2	GARANTIA 12 MESES	ENTREGA 7 DIAS	CREDITO 30 DIAS

ANGEL BERNAL en calidad de PRESIDENTE, debidamente autorizado para actuar en nombre y representación de ABM - AMERICAN BUSINESS MACHINE





Nikon
100th
anniversary

At the heart of the image™

D850™



I AM THE DIFFERENCE MAKER

100









PHOTOGRAPHERS' ENDORSEMENTS



[Landscape]

LUKE AUSTIN

"It's not just an increase in resolution — I also love the focus shift function, tilting touch screen, silent photography and high ISO performance."



[Fast
JE
"Som
its m
detai
in tar
lense
45.7 r
on!"



HIGHER RESOLUTION. HIGHER SPEED. GREATER VERS.
PURE POTENTIAL FOR STILLS AND VIDEO.

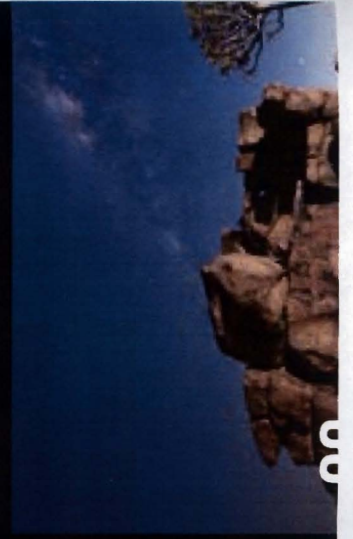




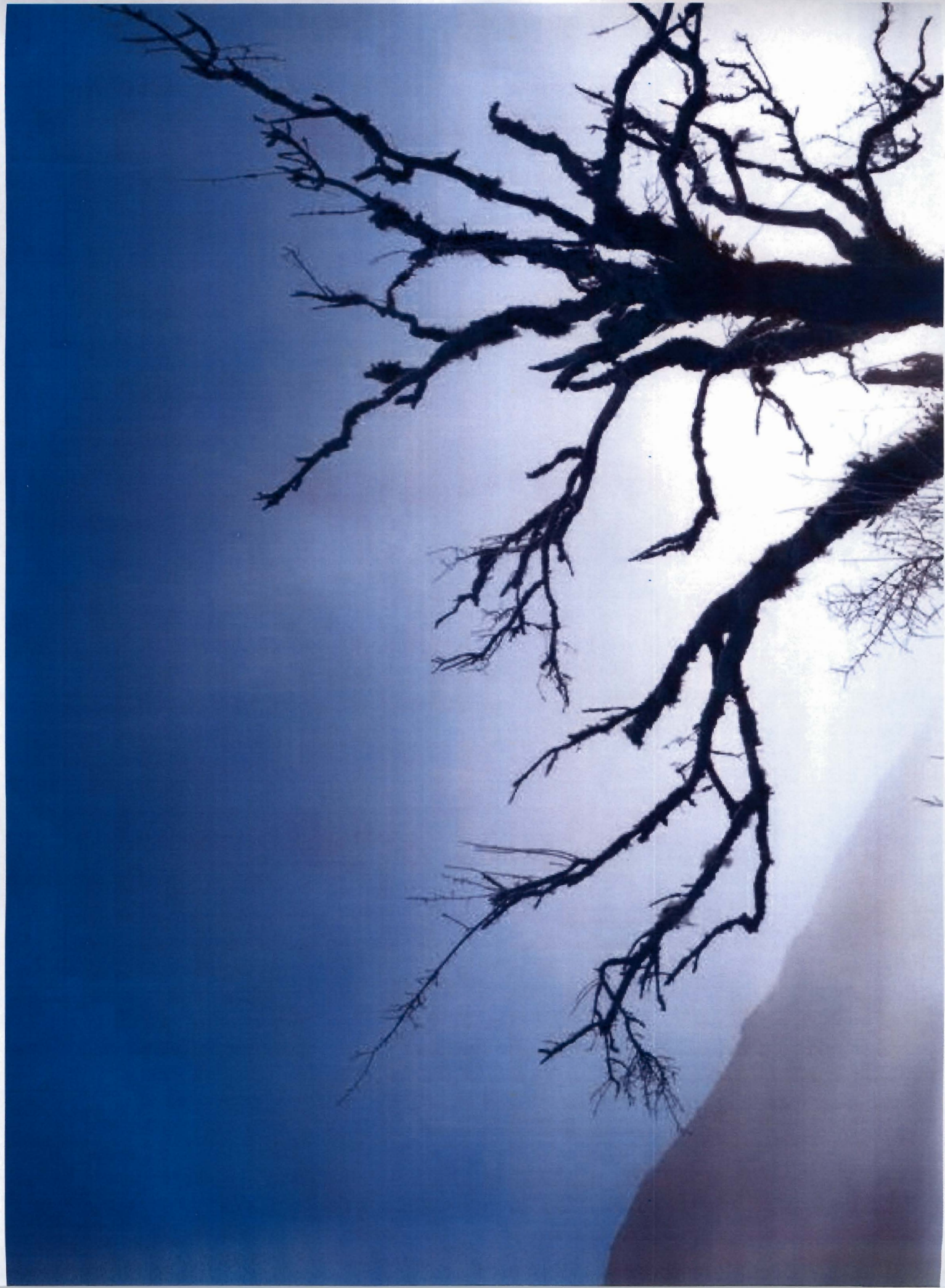
p16



p52



68



Effective noise reduction, fine detail and

Beauty is where you find it. The D850 captures it all — 1 incorporated in the flagship D5. EXPEED 5 renders delicate suppresses noise effectively while maintaining detail. It continuous shooting at approx. 9 fps* with 45 megapixe

* When using the MB-D18 Multi-Power Battery Pack with the EN-EL18b/EN-EL

Create your ideal images — Picture Control

Nikon's Picture Control system helps you craft images with the new Auto Picture Control, in addition to the seven e sharpening and clarity, opening up a wider range of opt them as your own custom Picture Controls.

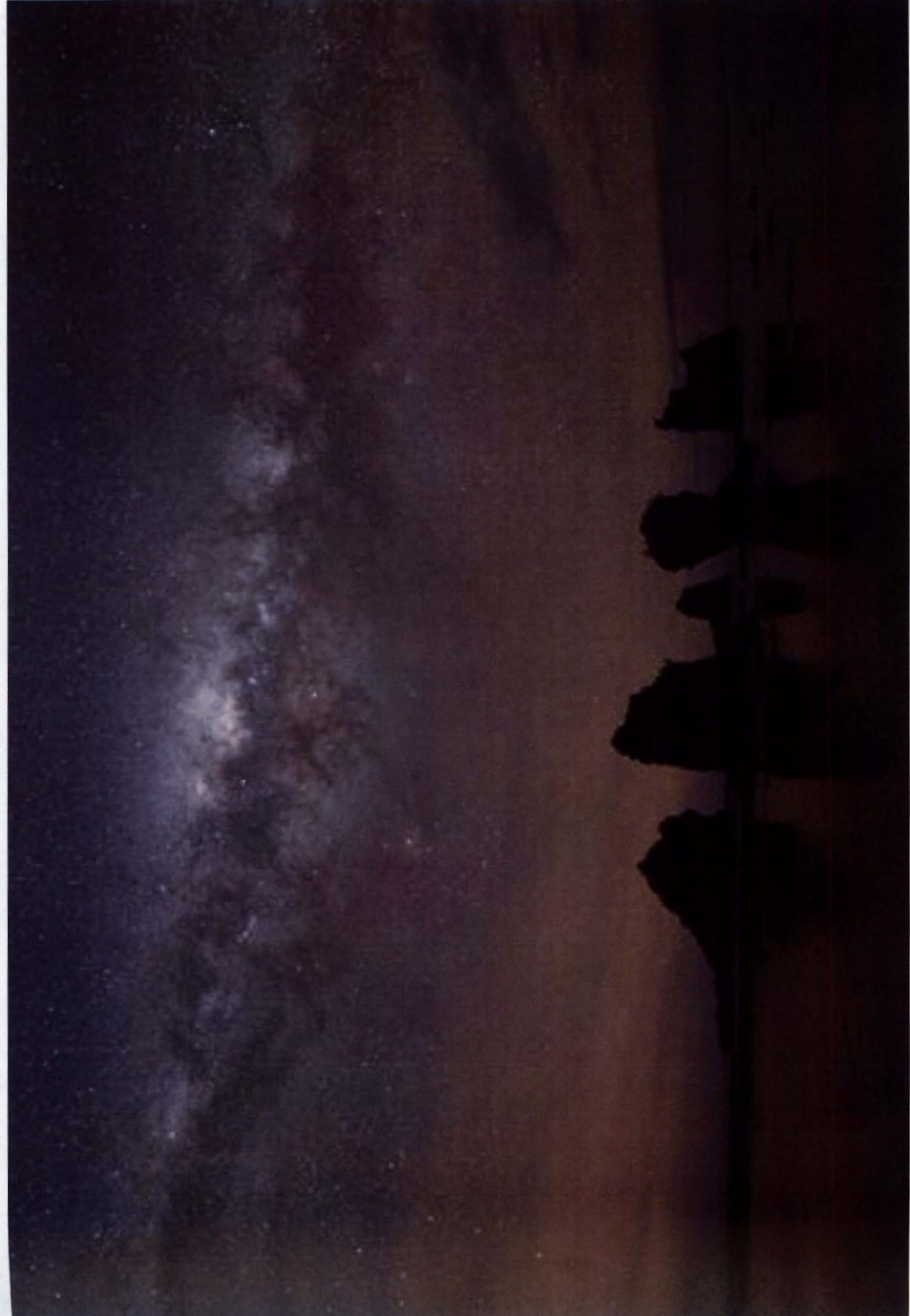
Automatically adjust images to fit the scene

Auto Picture Control produces more desirable images to option, according to each scene's characteristics. As a The Advanced Scene Recognition System is now even sunrises.



Picture Control: Auto

• Lens: AF-S NIKKOR 70-200mm f/2.8E FL ED VR • Exposure: [A] mode, 1/125 second.
• White balance: Natural light auto • Sensitivity: ISO 64 © Luke Austin



AF-S NIKKOR 14-24mm f/2.8G ED • Exposure: [M] mode, 15 seconds, f/2.8 • White balance: Color temperature (3700K) • Sensitivity: ISO 10000 • Picture Control: Auto

© Luke Austin

Significant images with stunning detail — on FX-format, backside illumination CMOS sensor delivering 45.7 megapixels with ISO 64-25600

The D850 allows landscape photographers to capture a diverse range of scenes in sumptuously rich detail. It is the first Nikon D-SLR to use a backside illumination sensor, which allows incoming light to reach photodiodes more efficiently. Together with the camera's low-noise performance, this enables it to achieve ISO 25600 despite its high



Unparalleled resolving power to match 45 megapixels — NIKKOR lenses

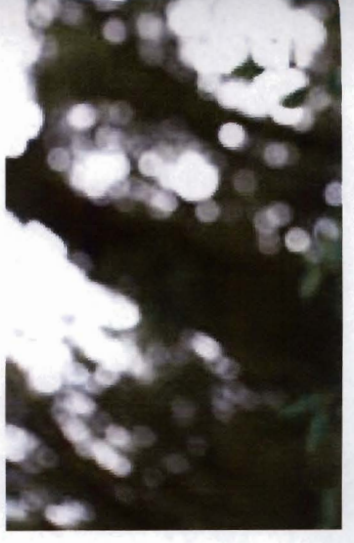
With their exceptionally high resolving power, which makes full use of 45 megapixels, NIKKOR lenses are a perfect partner for the D850, allowing photographers in every field to better capture the essence of their vision, and render every delicate tone or nuance. Thanks to Nikon's superb optical technology, they provide sharp resolution even at the periphery of an image, combined with elaborately designed, beautiful image-blur characteristics. Many lenses feature the anti-reflective Nano Crystal Coat, which effectively reduces ghost and flare. They are also designed to produce point light sources as point images as much as possible. NIKKOR lenses are powerful tools for professionals looking to ensure instantly sharp images regardless of the subject, environment or lighting conditions.



AF-S NIKKOR 70-200mm f/2.8E FL ED VR

This fast f/2.8 telephoto zoom with reduced weight enamel sealed to maximize dust- and drip-resistant performance and the adoption of fluorite, ED glass and HRI lens elements is equivalent to a shutter speed 4.0 stops* faster in Normal AF control is obtained with the adoption of an electromagnetically controlled AF system.

* Based on CIPA Standards. This value is achieved when attached to an FX-format camera.



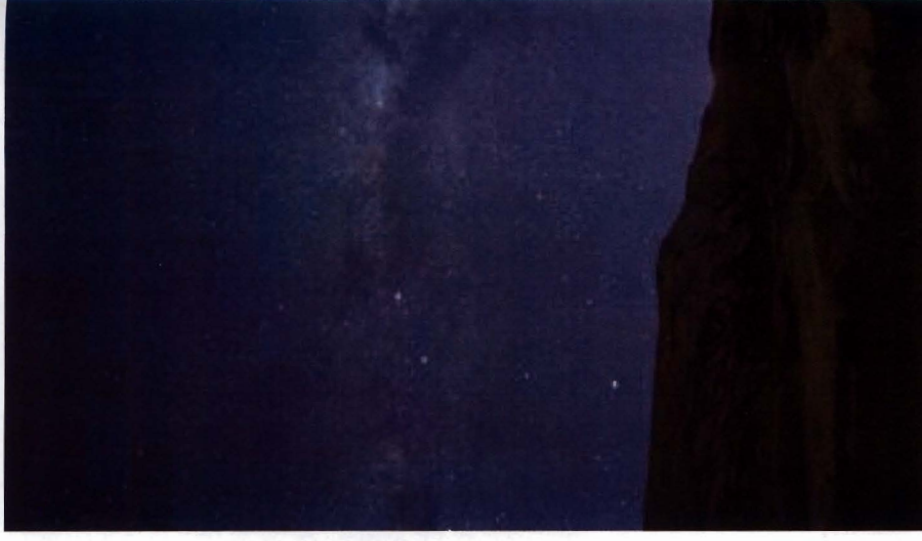
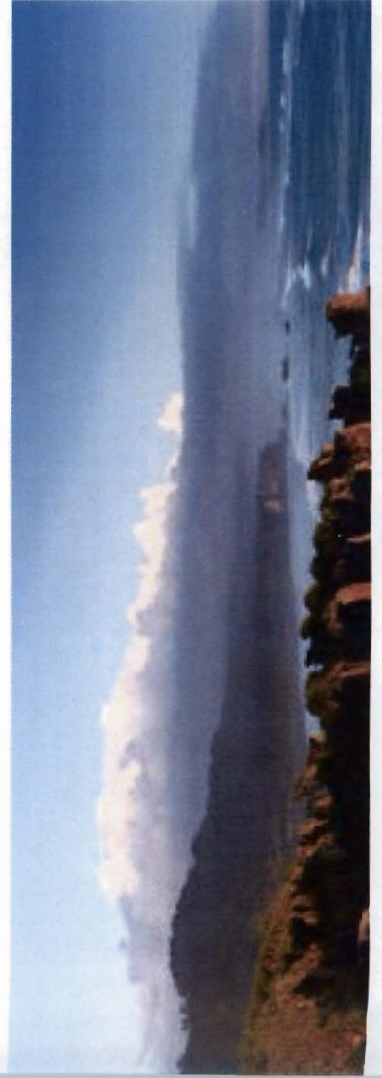


- Exposure: [M] mode, 5 seconds, f/6.3
 - White balance: Natural light auto
 - Sensitivity: ISO 64 • Picture Control: Auto
- © Luke Austin



NIKKOR 19mm f/4E ED

19 mm focal length of this PC lens gives an angle of view that will be familiar to architecture and interior photographers, while bringing dramatic perspectives to landscape shots. Its mechanical structure allows the shift position to be adjusted smoothly and precisely, without the need for locking and unlocking. And thanks to its “PC Rotation” mechanism, the direction of tilt operation can be made parallel or perpendicular. Shift, giving you greater control over perspective, focus and depth of field. Three ED glass elements and two aspherical lens elements are employed along with Nano Crystal Coat and a fluorine coat.



- Lens: AF-S NIKKOR 14-24mm f/2.8G ED • Exposure: [M] mode, 15 seconds, f/2.8 • White

Nail the shot with full detail and no mechanical noise

When capturing a night sky blanketed with stars, you pinpoint detail with 45 megapixels. The D850's silent photography function*1 in still mode, meaning it doesn't cause any mechanical vibration, allows you to capture a night sky in complete silence. This mode can be used in approx. 6-fps continuous shooting for approx. 30 frames**2.

*1 In M and A modes. Aperture drive sound occurs in P and S modes.

**2 Continuous shooting is available for up to approx. 3 s.

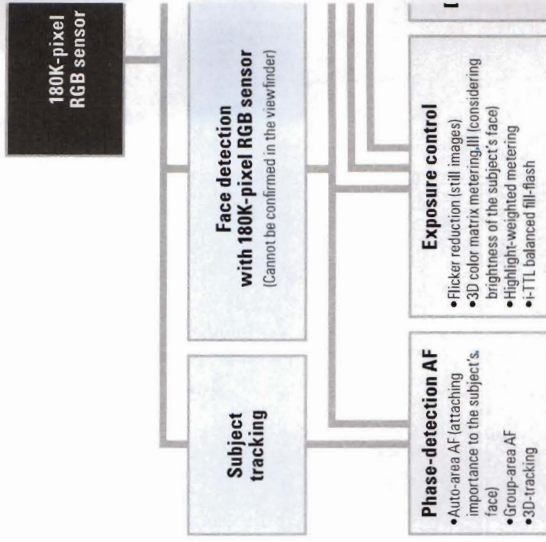
Note: Rolling shutter distortion may occur during silent photography, AF/AE fix

Convenient shooting with ND filters*1 —

The D850 employs a 180K-pixel RGB sensor with super-t metering down to -3 EV*2. This helps enormously when capturing long-exposure shots with ND filters (such as on the camera's AE and AF without needing to detach the System uses the RGB sensor's increased pixel count to auto white balance, i-TTL balanced fill-flash, auto-area photographers to achieve their desired results.

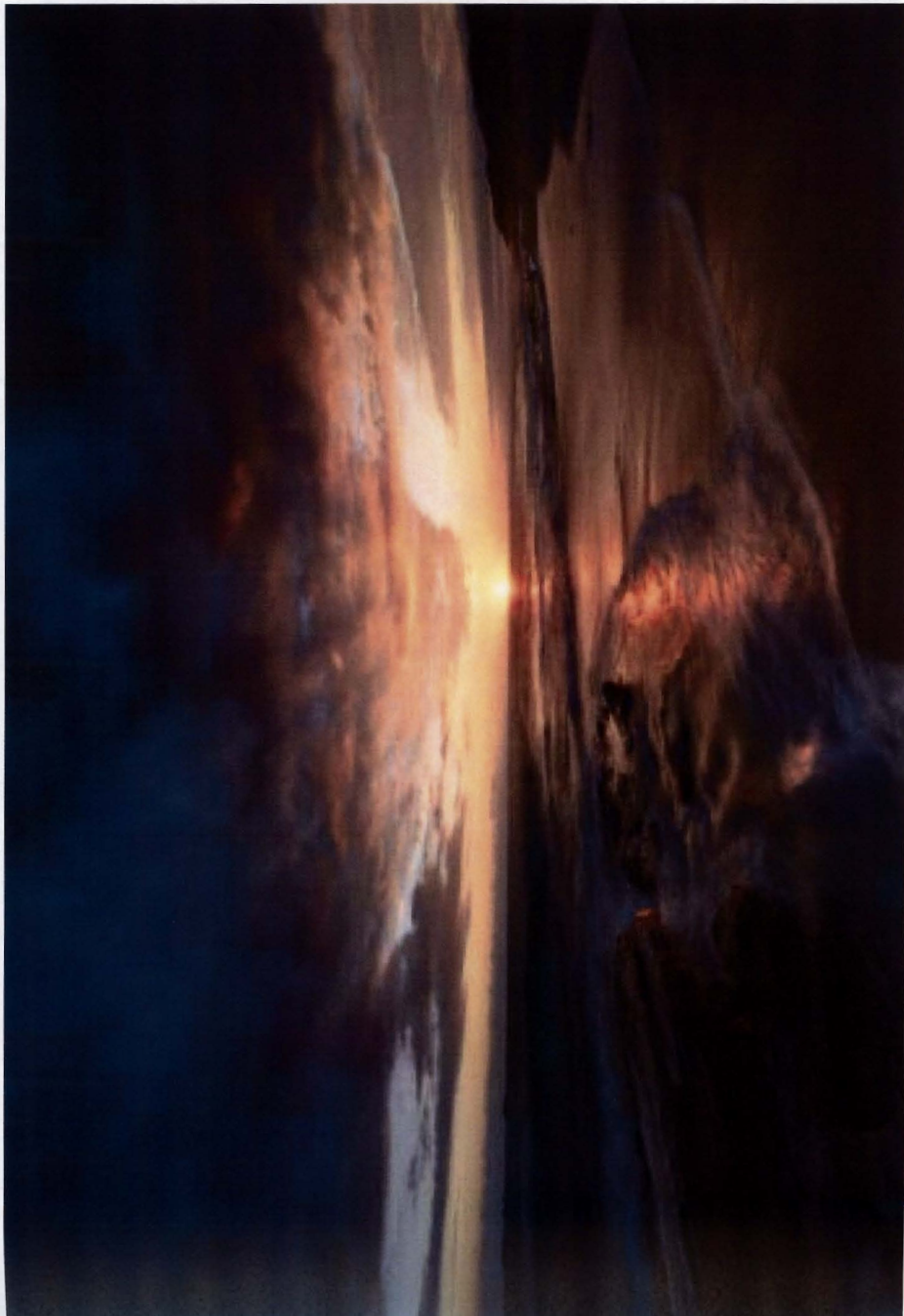
*1 Except high-density ND filters.

*2 ISO 100, f/1.4 lens, 20°C/68°F, using matrix or center-weighted metering.



Clearly confirm your entire view — 0.75x

The D850 provides a wide field of view for easier subject magnification* for its optical viewfinder — the highest format D-SLR. The viewfinder has been redesigned to enable a new condenser lens with refined refraction, allowing for a sufficiently large and bright high-contrast viewfinder.



AF-S NIKKOR 14-24mm f/2.8G ED • Exposure: [M] mode, 1/6 seconds, f/11 • White balance: Natural light auto • Sensitivity: ISO 64 • Picture Control: Auto

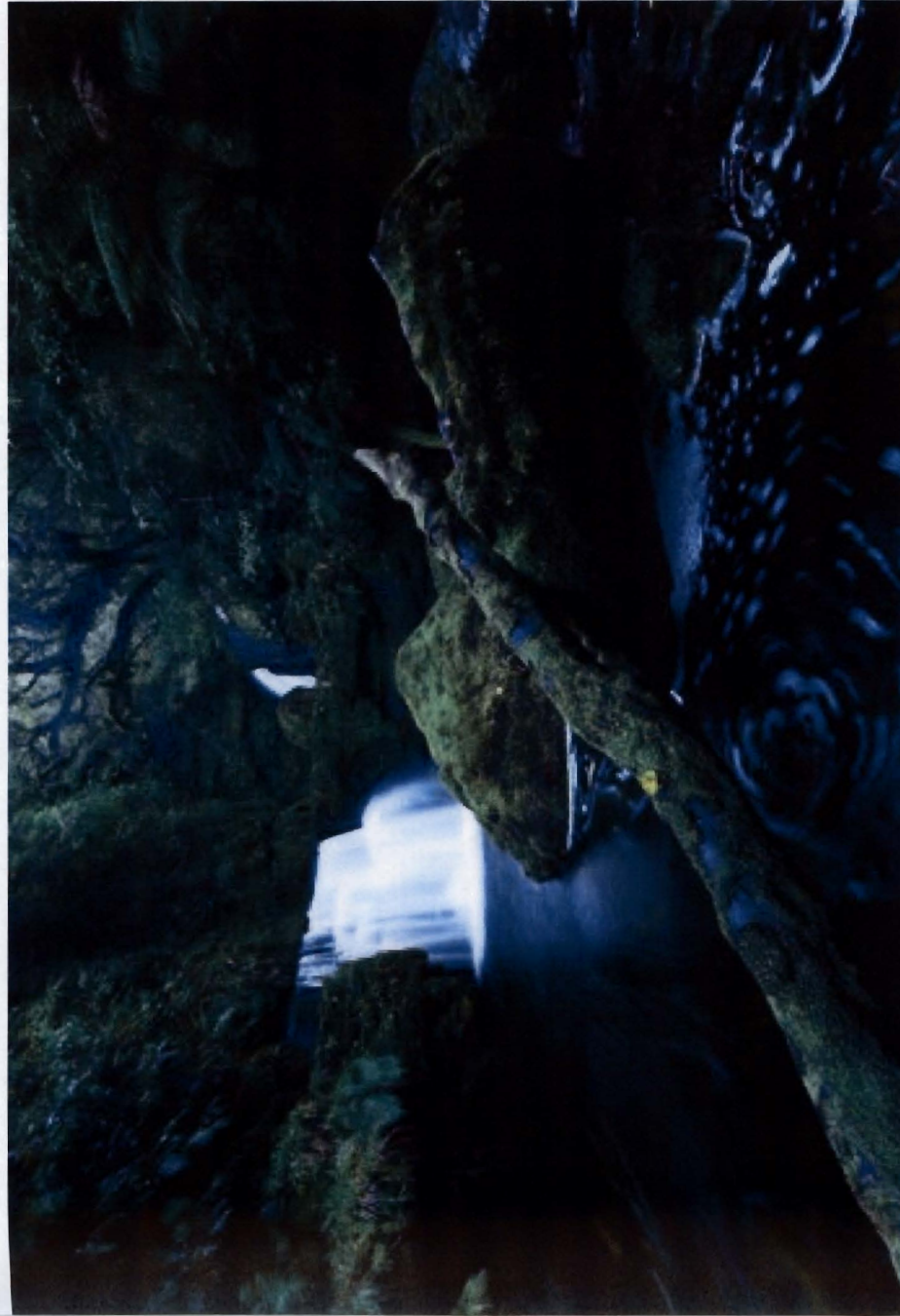
© Luke Austin

Be faithful color reproduction under natural light — New natural light auto white balance option

The D850 employs a new "natural light auto" white balance mode, taking advantage of the advanced Scene Recognition System's improved light source identification function. This option delivers optimal white balance results under natural light — a valuable asset for landscape shooters. It makes it possible to respond quickly to changes in the weather conditions without switching to the direct sunlight or cloudy options. When shooting scenes as an autumnal landscape awash with red leaves or spectacular orange sunset, it also ensures the warm colors, helping create even more impressive pictures.



White balance: Auto II



AF-S NIKKOR 14-24mm f/2.8 ED • Exposure: [A] mode, 3 seconds, f/11 • White balance: Natural light auto • Sensitivity: ISO 64 • Picture Control: Auto

© Luke Austin

Greater convenience in the field — Touch-sensitive, tilting 8-cm/3.2-in. 2359k-dot monitor

Whether lowering the camera down for a macro shot or pointing upwards at a starry night sky, the D850's tilting LCD monitor makes it easier to shoot from difficult angles. The monitor opens smoothly when the camera is mounted on a tripod and has the most extensive touch functionality found in any Nikon D-SLR camera to date. From changing menu settings to shooting to reviewing images, it offers a new level of convenience. And thanks to the monitor's 2359k-dot high-resolution display, you can easily check images and confirm focus in precise detail — which is crucial when working with



Normal-area AF Pinpoint AF

Achieve precise focus on a very small area

The D850's new pinpoint AF mode is a valuable asset for macro photography. It allows you to select a very small area of the frame to focus on, ensuring that the subject is sharp while the background is blurred.

Accurate manual focus confirmation — f

Many landscape photographers prefer to use manual focus when shooting at wide apertures like f/1.4 or f/2.8 with the D850's focus peaking display makes it easier to confirm

Huge time savings in post-production — In-camera RAW batch processing

Shooting in RAW gives greater leeway in post-production; photographers draw the most from the images they capture now, however, processing RAW has always been extremely consuming. The D850 resolves this issue by offering a convenient, in-camera RAW batch-processing feature, which allows you to quickly apply the same adjustments to selected images. You can save the original RAW files and processed JPEG files to a large-capacity XQD card, or else save the original on an XQD card and the processed JPEG on an SD card in the second slot, for easier data management.



© Luke Austin

Getting everything in focus for focus stacking — Focus shift photography

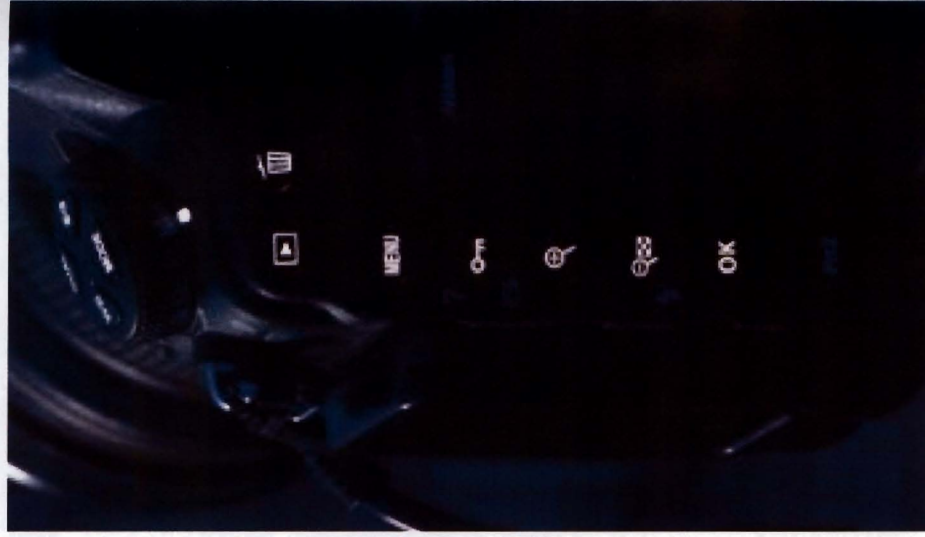
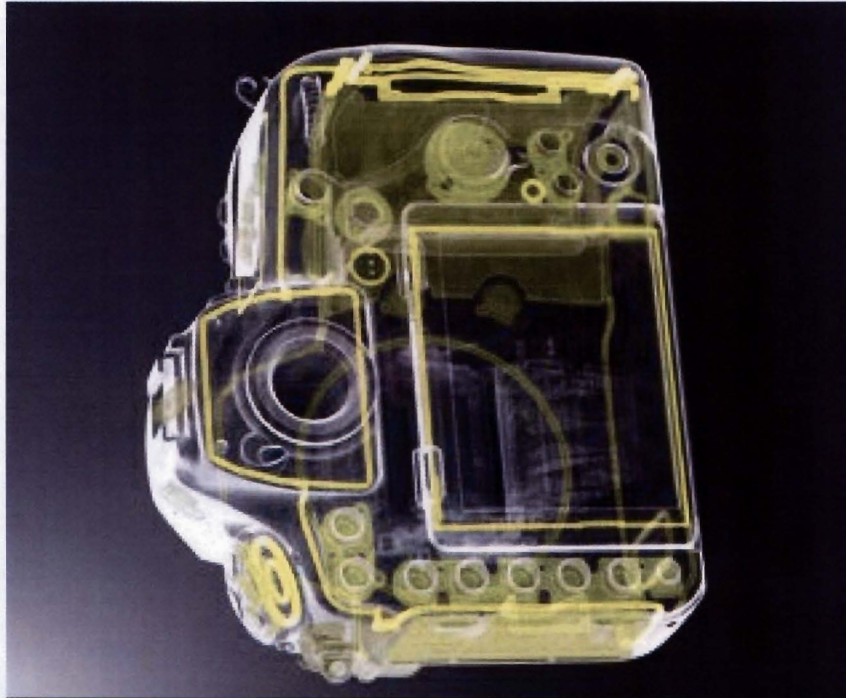
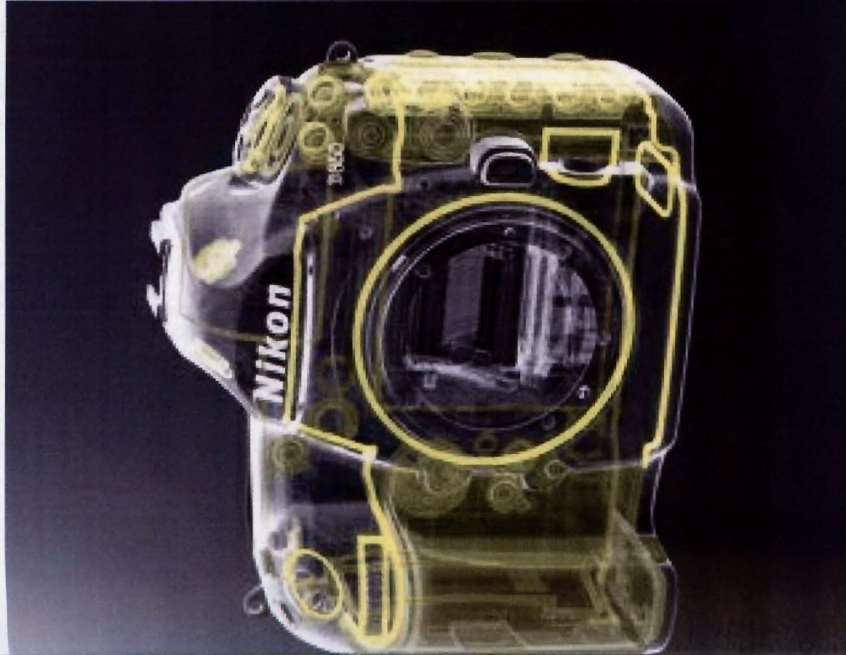
When shooting a landscape containing various subjects at different focus distances or creating specimen pictures of insects and flowers, photographers may want to bring everything into sharp focus. The D850 introduces a focus shift photography function, which enables it to shoot sequences of up to 300 frames, while gradually and automatically shifting focus position from the start point to infinity. The shutter release interval can be set from 0-30 s, while the focus step width can be selected from 10 levels. Continuous shooting at approx. 5 fps is also available. Merging the pictures using focus stacking in post-production* gives you an image where every detail is in brilliantly sharp focus.

*Requires third-party editing software.

Focus shift photography steps

Show your creativity in a social media-friendly format — New 1:1 image area option

The D850 introduces a new image area option with a 1:1 aspect ratio. While reminiscent of the 6 x 6 medium format, it's also ideal for social media, where square images have become increasingly popular. It is also possible to add shading in the viewfinder around the image area you choose, helping you compose more accurately. You can create pictures to



App shooting under harsh conditions — superior weather-/dust-resistant performance in a robust body

Working in environments such as tropical forests or desert, landscape photographers often expose their camera bodies to harsh conditions. Nikon has applied its stringently high standards of weather resistance and durability, renowned in the fields of photography and science alike, to the D850. It has comprehensive ether- and dust-sealing applied to its joints and seams, and its rear and bottom covers, as well as the inside body structure, made of robust magnesium alloy. It's a camera that allows you to work with confidence in a wide range of tough environments. And, its redesigned grip is deeper and longer, making it easier to



Ergonomic operation and confidence view

The superb performance of the D850, such as its low noise and high ISO performance, allows landscape photographers to venture out in the dark and create amazing images. The camera's rear left side and release mode dial, making it easier to operate in a convenient ergonomic layout to fit photographers' hands, to allow easier right-handed operation by photographers.

Not for extended periods without worry — Long battery life

The D850 allows you to concentrate on shooting without having to worry about battery life. The camera can shoot up to approx. 1840 still images*1 from a single charge of an EN-EL15a/EN-EL15 Rechargeable Li-ion Battery, thanks to its energy-efficient power circuit and EXPPEED 5 image-processing engine. An optional weather- and dust-resistant MB-D18 Multi-Power Battery Pack can also be used as a power source, enabling shooting of up to 5140 images**.

*1 Based on CIPA Standards.
 **2 Based on CIPA Standards. With the EN-EL15a/EN-EL15 Rechargeable Li-ion Battery in the body and the EN-EL18b/EN-EL18a in the MB-D18. Optional BL-5 Battery Chamber Cover required for use of the EN-EL18b/EN-EL18a.

Maximum number of pictures that can be shot per single battery charge (CIPA Standards)

1850

1840 still images*1

1110

1200 still images*2

*1 When using an EN-EL15a/EN-EL15 Rechargeable Li-ion Battery.

*2 When using an EN-EL15 Rechargeable Li-ion Battery.



D850 + MB-D18



EN-EL15a

RAW image-processing software with auto retouch brush — Capture NX-D (free download)

Nikon's Capture NX-D software offers the best way of processing original RAW (NEF/NRW) files without losing any of their extremely rich data. It incorporates an auto retouch brush that lets you remove dust spots on pictures. You can also adjust options such as exposure compensation, white balance, Picture Controls and unsharp mask. JPEG and TIFF files are also compatible.

Optimal management of still images and movies — ViewNX-i (free download)

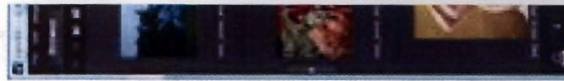
ViewNX-i is Nikon's free software for browsing and editing JPEG, RAW and movie files, as well as RAW files edited with Capture NX-D. It incorporates ViewNX-Movie Editor, which can be used to edit movies, including 4K UHD footage. Access to various web services is also available.



Large memory card slots for fast and secure data storage — Compatible with XQD and UHS-II SD cards

Large storage media is crucial to all creative work. The D850 has dual slots for XQD and UHS-II SD cards, enabling rapid reading and writing of the vast data generated from its high-pixel-count image sensor. It also offers a variety of storage options, including the ability to store the same data onto two cards for instant backup and recording RAW and JPEG simultaneously onto separate cards.

Flexible remote shooting control — WR-R10/WR-T10 Wireless Remote Control (optional)







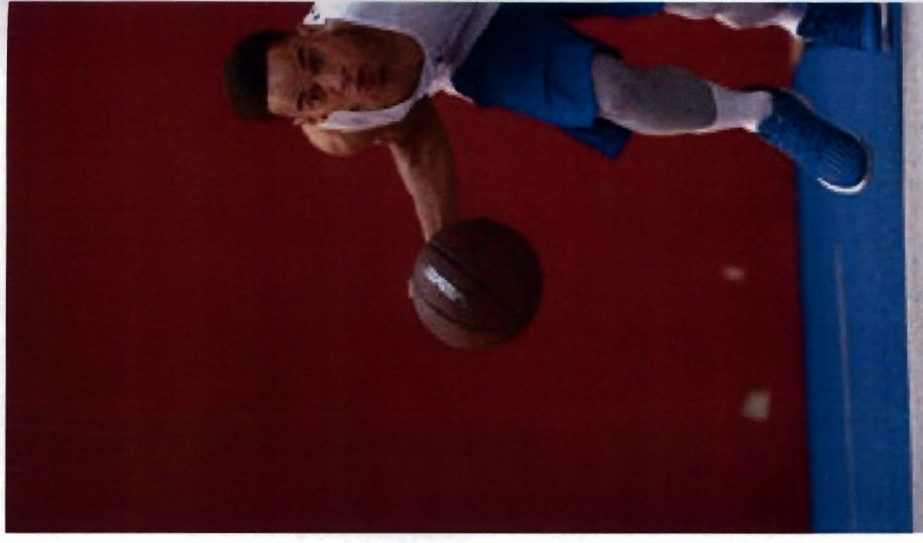
AF-S NIKKOR 24-70mm f/2.8E ED VR • Exposure: [M] mode, 1/2500 second, f/5.6 • White balance: Auto 1 • Sensitivity: ISO 1600 • Picture Control: Standard © Little Shao

Spectacular speed to capture dynamic action in detail — 9-fps/7-fps high-speed continuous shooting.

Define the power of a dynamic moment with a spectacular match of high resolution and high-speed shooting. The D850 captures massive, sharp 45-megapixel images at 9 fps with the optional MB-D18 Multi-Power Battery Pack (EN-EL18b/EN-EL18a Rechargeable Li-Ion Battery*) attached, or at 7 fps with the body only. The new image sensor achieves fast readout of large amounts of data, which is handled rapidly by the powerful EXPEED 5 image-processing engine. Despite the heavy load, the camera is capable of continuous shooting for up to 51 frames*2 (body) even in 14-bit lossless compressed RAW (up to 170 frames in 12-bit lossless compressed RAW). It lets you explore a whole new realm of high-speed photography combined with high-resolution images.

*Optional BL-5 Battery Chamber Cover required.
 **When using a 64 GB XQD (Sony, OD-G64E) memory card.

Maximum number of pictures (large, 14-bit lossless compressed RAW) that can be shot in a single burst of high-speed continuous shooting

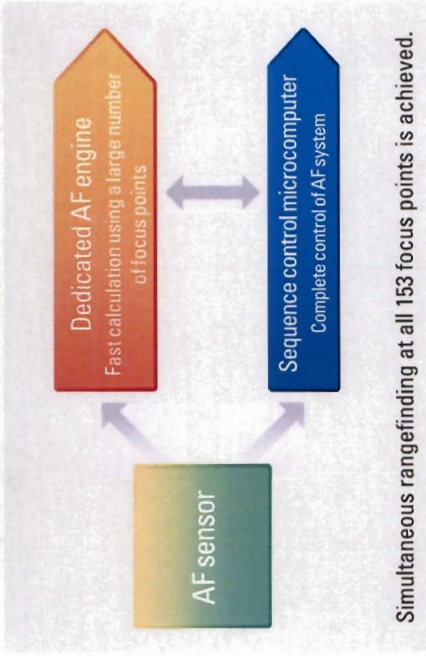
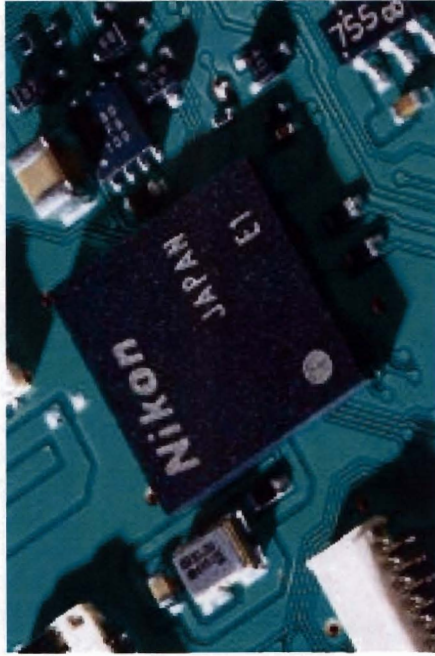


Powerful acquisition and tracking of fast 153-point AF system and AF down to -4 EI

Accurate focusing is crucial to large-pixel-count image with the same powerful 153-point AF system as the flag praised by editorial sports photographers. The 153 dens (selectable) provide over 130% of the D810's frame coverage with powerful detection are optimally distributed. The AF achieve pinpoint focus on a small area such as an athlete to immediately acquire fast, often random movements. The D850 also comes with the same AF lock-on adjuster to focus more accurately on subjects moving toward the

Fast, accurate focusing — Dedicated AF engine

In the D5, the D850 employs a dedicated AF engine. Working in parallel with the sequence control microcomputer, it achieves simultaneous rangefinding at all 153 focus points, which contributes to fast, accurate focusing. As a result, when shooting an athlete in auto-area AF, for example, it eliminates the need to select focus points each time you change your composition, contributing to a more efficient workflow.



Precise focus on distant subjects with teleconverters — Powerful AF compatible with effective aperture of f/8

The D850 demonstrates powerful AF performance even when using a teleconverter. All 153 points are compatible with effective apertures of f/5.6 and faster*. And fifteen focus points, including nine selectable points, are compatible with an effective aperture of f/8.

*Number of effective cross sensors varies with certain lens combinations.

Focus points capable of AF and electronic rangefinding when using AF-S/AF-I teleconverters

For effective apertures slower than f/5.6 and faster than f/8

For effective aperture of f/8

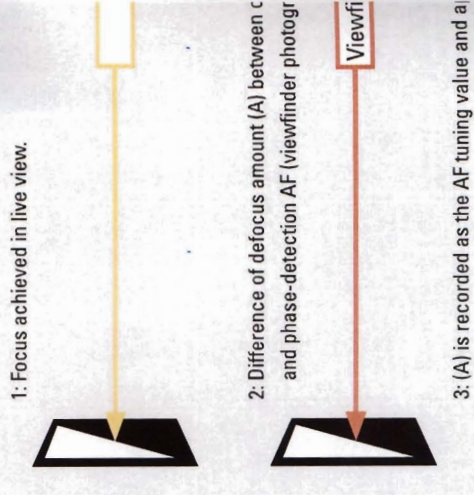


Simplified adjustment for more accurate

Accurate AF is crucial to take full advantage of the D850's subtle adjustments for each type of lens you use automatically acquire, then store, the AF tuning value.



Auto AF fine-tune system



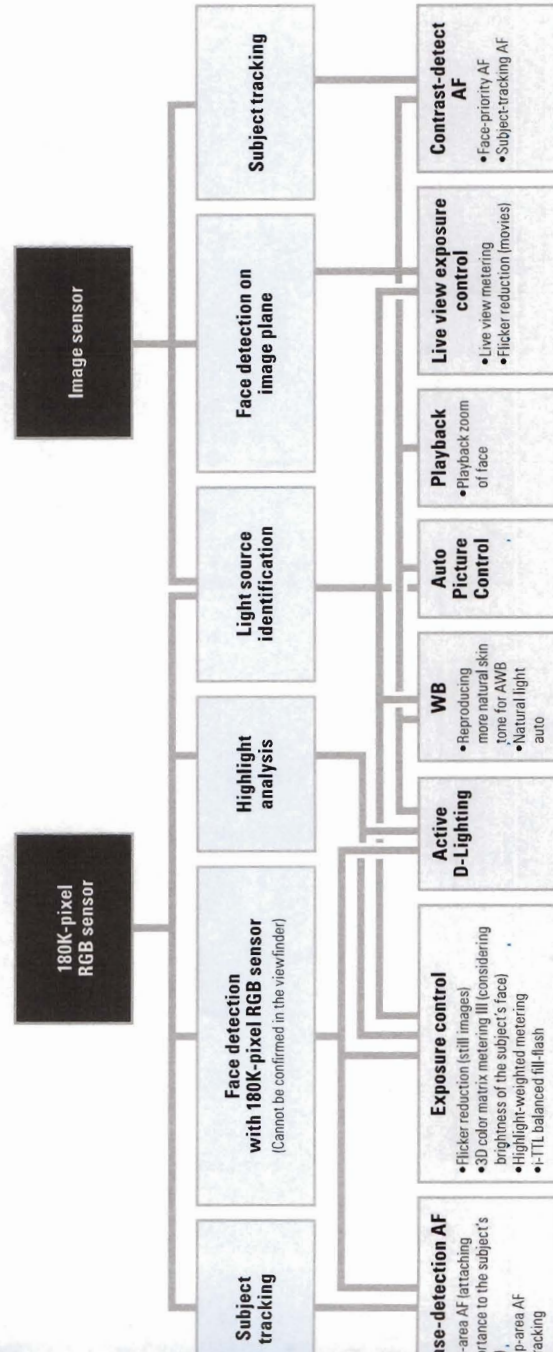
More reliable auto control — 180K-pixel RGB sensor for Advanced Scene Recognition System

The D850 is equipped with the same 180K-pixel RGB sensor as the D5. Its increased pixel count enhances the accuracy of various auto controls by the Advanced Scene Recognition System, such as matrix metering, auto balance, i-TTL balanced fill-flash, auto-area AF, 3D-tracking and Active D-Lighting. Furthermore, metering is stable down to -3 EV* thanks to the sensor's superb low-light sensitivity, which is effective when shooting low-contrast scenes or using a teleconverter. Meanwhile, the flicker detection function reduces flicker effects for more consistent still photo shooting.

00, f/1.4 lens, 20°C/68°F, using matrix or center-weighted metering.



180K-pixel RGB sensor

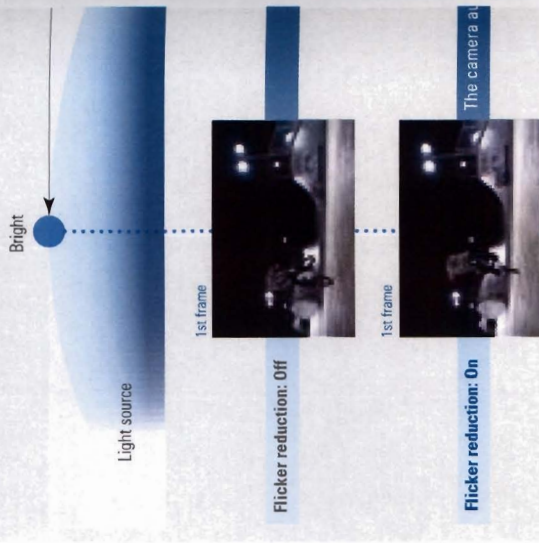


Prevent white clipping and preserve tones in highlights — Highlight-weighted metering

When shooting a white-clad karate athlete under a spotlight against a dark background. If you want to retain the subtle tones and hues of color in the clothes, try highlight-weighted metering. This metering delivers a richer tonality in images by giving priority to the brightest portions of a scene and avoiding white clipping.



Flicker reduction function (in continuous shooting)



Consistent exposures under artificial light

Artificial light sources such as mercury lighting often produce flicker. The D850's flicker reduction function avoids this problem by timing exposures to avoid underexposure and color casts. Using "Auto" flicker reduction makes the camera automatically detect the occurrence of banding in footage.

* Continuous shooting speed may be decreased.

Effective noise reduction, fine detail and

Beauty is where you find it. The D850 captures it all — 14-bit RAW data incorporated in the flagship D5. EXPEED 5 renders delicate details, suppresses noise effectively while maintaining detail. It's ideal for continuous shooting at approx. 9 fps* with 45 megapixel



AF-S NIKKOR 200mm f/2.8 ED VR II • Exposure: [M] mode, 1/640 second, 1/2 • White balance: Color temperature (7900 K) • Sensitivity: ISO 6400 • Picture Control: Neutral

© Little Shao

Unparalleled resolving power to match 4
 With their exceptionally high resolving power, which makes up a diverse lineup including many telephoto lenses. Thanks to an image, combined with elaborately designed, beautiful lenses which effectively reduces ghost and flare. They are also powerful tools for professionals looking to en



Highly dynamic action photography — Nikon FX-format, backside illumination CMOS sensor for 45.7 megapixels with ISO 64-25600



The D850 allows commercial sports photographers to capture moments of dynamic action in sumptuously rich detail — even during 9-fps continuous shooting. It is the first Nikon D-SLR to use a backside illumination sensor, which allows incoming light to reach photodiodes more efficiently. Together with the camera's low-noise performance, this enables

Conventional CMOS sensor



Backside illumination CMOS sensor





AF-S NIKKOR 70-200mm f/2.8E FL ED VR

Fast f/2.8 telephoto zoom with reduced weight enables highly agile shooting in diverse situations. Movable parts and other sections are designed to maximize dust- and drip-resistant performance. Further enhanced optical performance is realized with a newly developed optical element and the adoption of fluorite, ED glass and HRI lens elements, as well as Nano Crystal Coat. The VR system provides a powerful effect equivalent to a shutter speed 4.0 stops*¹ faster in Normal mode. Meanwhile, Sport mode brings the same level of viewfinder image stability in handheld shooting that you would expect when using a monopod. AF drive and AF tracking performance have been enhanced, while stable AE control is obtained with the adoption of an electromagnetic diaphragm mechanism.



AF-S NIKKOR 400mm f/2.8E FL ED VR

This new-generation super-telephoto lens delivers outstanding optical performance with minimized chromatic aberration. A weight of approx. 3800 g/8.4 lb*² is achieved through the employment of fluorites for superior mobility. The VR system provides a powerful effect equivalent to a shutter speed 4.0 stops*¹ faster in Normal mode, and Sport mode achieves a stable viewfinder image that's similar to using a monopod, even during handheld shooting. Other notable features include an electromagnetic diaphragm for stable exposure control even during continuous shooting, a highly reliable fluorine coat applied to the lens front, and a tripod

Clearly confirm your entire view — 0.75x
The D850 provides a wide field of view for easier subject magnification* for its optical viewfinder — the highest e format D-SLR. The viewfinder has been redesigned to e new condenser lens with refined refraction, allowing fo a sufficiently long eye point. Its high-contrast viewfinde organic EL display elements, making it easier to read ev

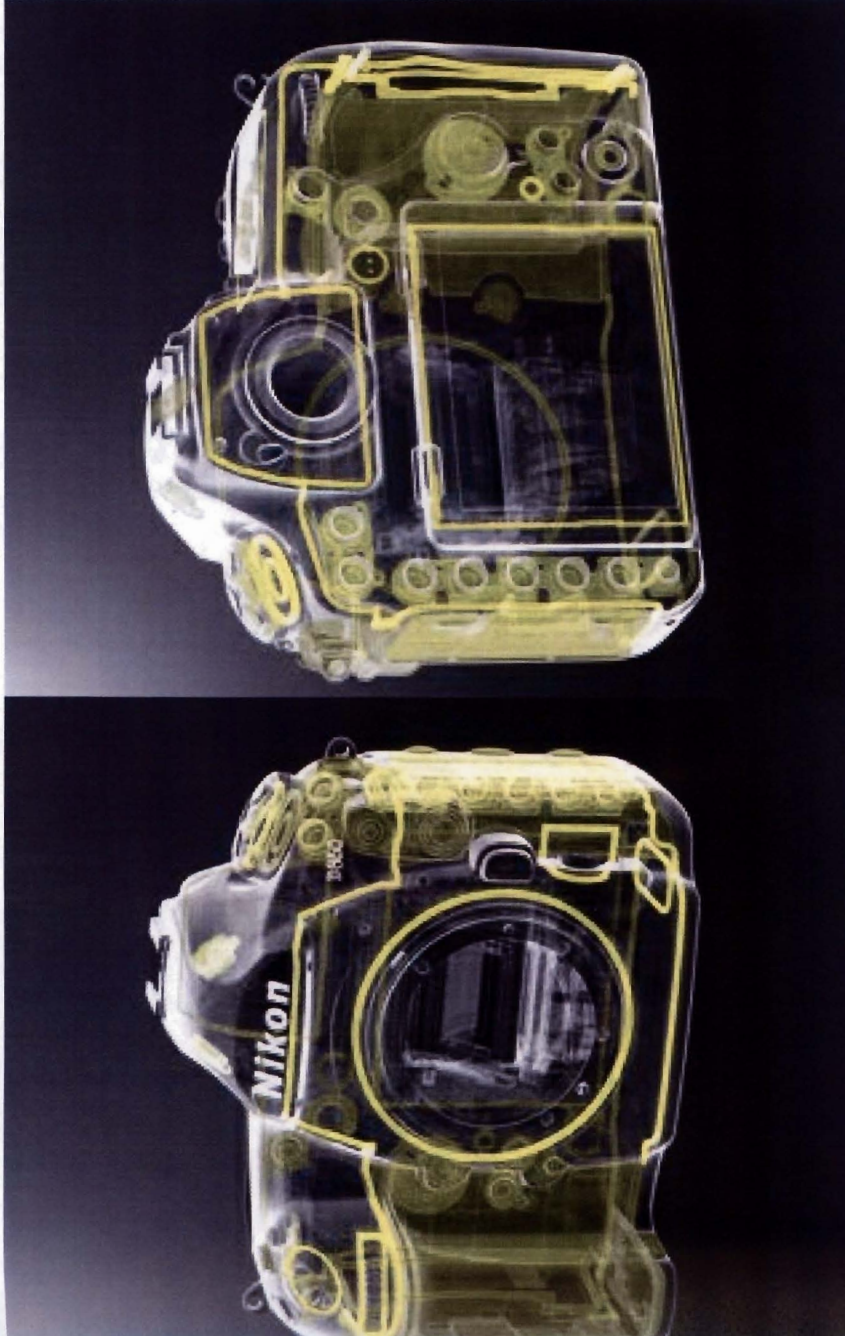
* 50mm f/1.4 lens at infinity, -1.0 m¹.

Greater convenience in the field — Touch operable, tilting 8-cm/3.2-in. 2359k-dot m

When capturing action from a unique angle, the D850's monitor makes it easier to get the shot. The monitor opt even when the camera is mounted on a tripod and has 1 extensive touch functionality found in any Nikon D-SLR date. From changing menu settings to shooting to review it brings a new level of convenience. And thanks to the 2359k-dot high-resolution display, you can easily check confirm focus in precise detail — which is crucial when with 45 megapixels — by pinching out to enlarge.

- Exposure: [M] mode, 1/500 second, f/9
 - White balance: Auto 1 • Sensitivity: ISO 200
 - Picture Control: Standard
- © Little Shao





Ident operation under wet conditions — superior weather-/dust-resistant performance a robust body

Commercial sports photographers may sometimes use splashes of water or sand for dramatic effect, which can result in the camera getting wet or dirty. Nikon has applied its stringently high standards for weather resistance and durability, renowned in the fields of sports photography and science alike, to the D850. It has comprehensive weather- and dust-sealing applied to its joints and seams, and its top and bottom covers, as well as the inside body structure, made of robust magnesium alloy. It's a camera that allows you to work with confidence in a wide range of tough environments. Its redesigned grip is deeper and longer, making it easier to



Ergonomic operation and confidence view

The D850's buttons and dials are arranged in a convenient way. The rear side now features a sub-selector — added in the D850 — who use both camera models. Furthermore, the D850 has a change settings when shooting in the dark.

Dual memory card slots for fast and secure storage — Compatible with XQD and UHS-II cards

Wireless remote shooting control — WR-1, WR-R10/WR-T10 Wireless Remote Controllers (optional)

Wireless remote controllers bring a new array of options to your photography. The WR-1 and WR-T10 Wireless Remote Controllers can both be configured as a transmitter, and release the shutter of a camera with another WR-1 or WR-R10*¹ attached. When using the WR-1 as a transmitter, it's also possible to perform interval timer photography, and use its screen to confirm and change settings*² on the remote camera. WR-1 units communicate via 2.4 GHz radio frequencies, offering a communication range of up to 120 m/394 ft*³ in 15 channels. The WR-R10/WR-T10 can communicate within a range of up to 20 m/66 ft*³.

*Requiring a WR-R10 to the D850 requires the optional WR-A10 Wireless Remote Adapter.

¹Remote functions only.

²Menu items may vary depending on camera model.

³Approx. height of 1.2 m/3.9 ft; may vary depending on weather, presence of obstacles and communication conditions.



RAW image-processing software with auto retouch brush — Capture NX-D (free download)

Nikon's Capture NX-D software offers the best way of processing original RAW (NEF/NRW) files without losing any of their extremely rich data. It incorporates an auto retouch brush that lets you remove dust spots on pictures. You can also adjust options such as exposure compensation, white balance, Picture Controls and unsharp mask. JPEG and TIFF files are also compatible.

Optimal management of still images and movies — ViewNX-i (free download)

ViewNX-i is Nikon's free software for browsing and editing JPEG, RAW and movie files, as well as RAW files edited with Capture NX-D. It incorporates ViewNX-Movie Editor, which can be used to edit movies, including 4K UHD footage. Access to various web services is also available.



wired/wireless LAN transfer — WT-7/A/B/C Wireless Transmitter (optional)

Optional WT-7/A/B/C Wireless Transmitter provides a faster way to wirelessly transfer images to storage. It can transmit images and videos to a computer*¹ or FTP server via both wired and wireless LAN. Wired LAN supports 1000BASE-T and offers transmission



Smaller images with full post-production

There are times when you don't necessarily need to shoot the variety of scenarios that wedding photography involves multiple flash set-ups to low-light candid shots — meaning flexibility of RAW in post-production. That's why the D810's 12-bit lossless compressed RAW: large (45.4 MP), medium. And whichever option you use, in-camera RAW processing:

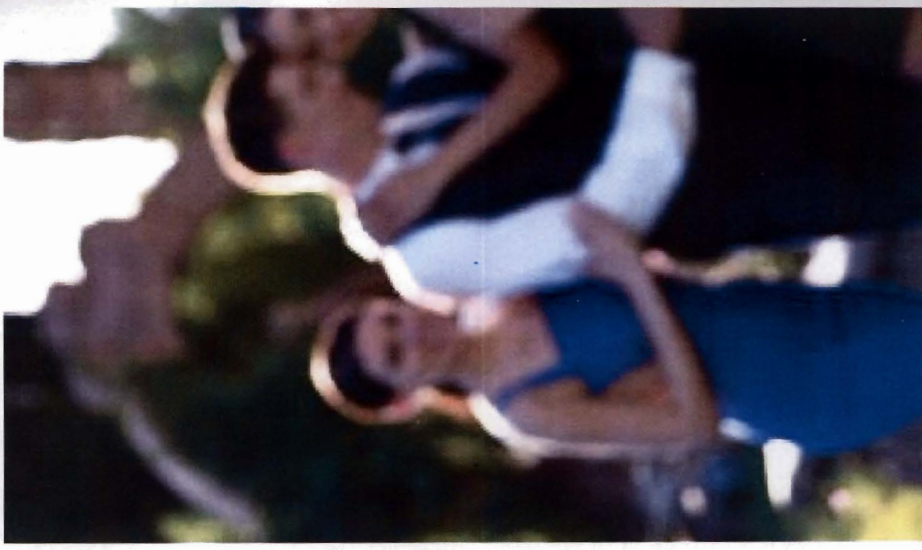
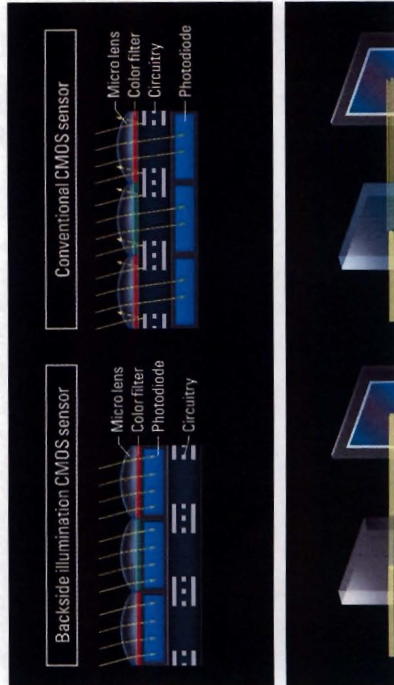


© Jerry Ghionis

AF-S NIKKOR 70-200mm f/2.8E FL ED VR • Exposure: [M] mode, 1/400 second, f/6.3 • White balance: Direct sunlight • Sensitivity: ISO 64 • Picture Control: Auto

Capturing beauty with exquisite detail — Nikon format, backside illumination CMOS sensor delivering 45.7 megapixels with ISO 64-25600

The D850 allows fashion and wedding photographers to capture beautiful moments in sumptuously rich detail, even when subjects are moving under low light. It is the first Nikon D-SLR to use a backside illumination sensor, allowing incoming light to reach photodiodes more efficiently. Together with the camera's low-noise performance, this enables it to



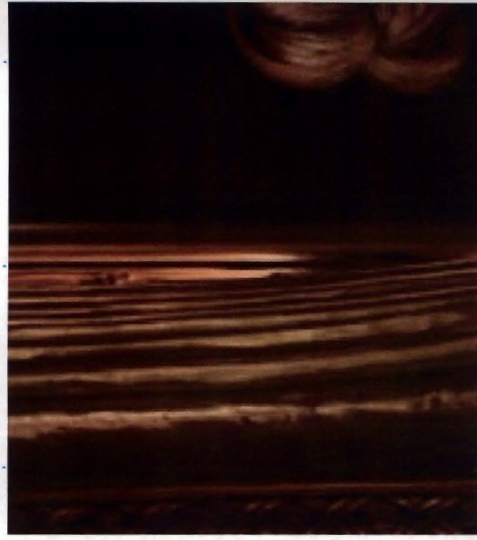
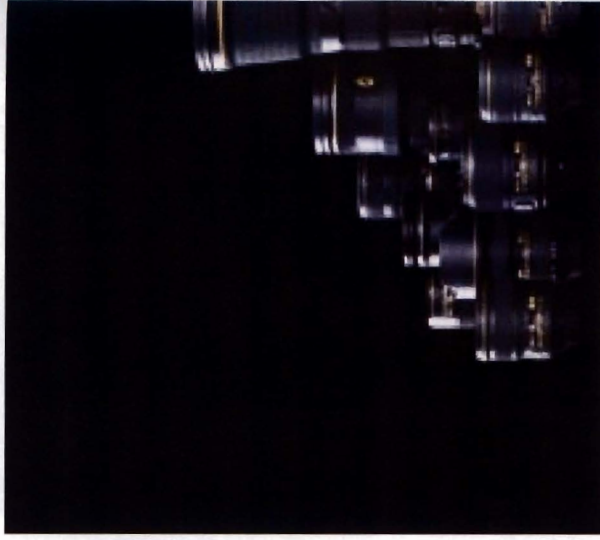
AF-S NIKKOR 70-200mm f/2.8E FL ED VR • Exposure: [A] mode, 1/1000 second



AF-S NIKKOR 70-200mm f/2.8E FL ED VR • Exposure: [M] mode, 1/200 second, f/3.2 • White balance: Direct sunlight • Sensitivity: ISO 4000 • Picture Control: Standard

© Jerry Ghionis

Unparalleled resolving power to match 4
 With their exceptionally high resolving power, which makes them photographers in every field to better capture the essential optical technology, they provide sharp resolution even in low-light characteristics. Many lenses feature the anti-reflective coatings to reproduce point light sources as point images as much as to produce brilliantly sharp images regardless of the subject, environment.



Flexible, easy flash control for elaborate lighting indoors or outdoors — SB-5000 Speedlight with radio-controlled system

Whether you're shooting indoors or outdoors, the SB-5000 Speedlight gives you complete mastery over your lighting. It can communicate via radio from distances up to approx. 30 m/98 ft*1 with a minimum interference from obstacles or ambient lighting. The radio-controlled Advanced Wireless Lighting*2), This makes it possible to light your outdoor subject more impressively — for example, from the side. Despite featuring powerful output at



- Exposure: [A] mode, 1/400 second, f/5.6
 - White balance: Direct sunlight
 - Sensitivity: ISO 800
 - Picture Control: Standard
- © Jerry Ghionis



S NIKKOR 24-70mm f/2.8E ED VR

spherical ED glass element — a first for NIKKOR lenses — works with ED glass, aspherical lens and HRI lens elements as well as Nano Crystal Coat to achieve remarkably high optical performance. Evolved Vibration Reduction (VR) provides an effect equivalent to a shutter speed 4.0* faster. Other notable features include an electromagnetic diaphragm mechanism, fluorine coat and highly durable body.



• Lens: AF-S NIKKOR 70-200mm f/2.8E FL ED VR • Exposure: [M] mode, 1/400 second, © Jerry Ghionis

Capture the beauty of fleeting moments in continuous shooting

The D850 lets you depict the spontaneous energy of a fashion show. It captures massive, sharp 45-megapixel images at 9 fps (with EN-EL18b/EN-EL18a Rechargeable Li-ion Battery*) and the sensor achieves fast readout of large amounts of data, while the camera's processing engine. Despite the heavy load, the camera lets you explore a whole new realm of high-speed photography.

*1 Optional BL-5 Battery Chamber Cover required.

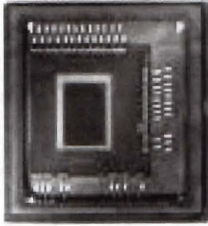
**2 When using a 64 GB XQD (Sony QD-G64E) memory card.

Maximum number of pictures (large, 14-bit lossless) of high-speed continuous shooting

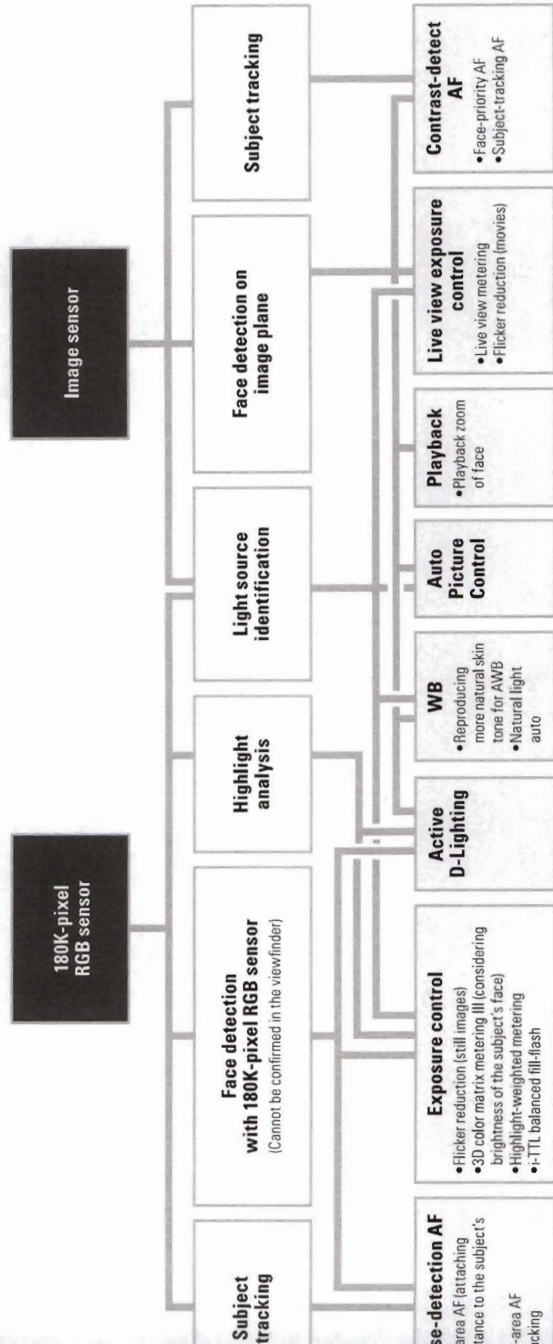
More reliable auto control — 180K-pixel RGB sensor for Advanced Scene Recognition System

The D850 is equipped with the same 180K-pixel RGB sensor as the D5. Its increased pixel count enhances the accuracy of various auto controls by the Advanced Scene Recognition System, such as auto white balance, i-TTL, selected fill-flash, auto-area AF, 3D-tracking and Active D-Lighting. Notably, it delivers stronger face detection using the optical viewfinder in scenes with moving subjects — an invaluable feature for wedding and fashion photographers. Furthermore, metering is available down to -3 EV* which is helpful when shooting low-light scenes.

* At ISO 100, f/1.4 lens, 20°C/68°F, using matrix or center-weighted metering.



180K-pixel RGB sensor



Prevent white clipping and preserve tones in highlights — Highlight-weighted metering

Unable to depict the delicate details of a white dress is critically important in wedding and fashion photography. If you want to retain subtle tones and nuances of color in the clothes, try highlight-weighted metering. This setting delivers a richer tonality in images by priority to the brightest portions of a scene and avoiding white



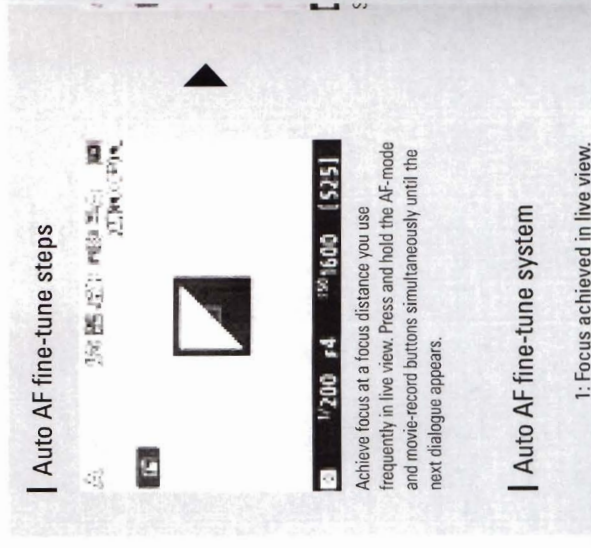
Smoother, more productive shooting — 1

The D850 comes equipped with the same powerful 153-Fashion and wedding photographers will feel the different flexibility it brings. In auto-area AF, the D850 automatically tracks the closest subject, and the camera quickly changes the movement or changes of framing. This means the photo focus point manually when changing composition, resu focus on faces. Pre-assigning a specific AF-area mode workflow, allowing you to temporarily switch modes du shoot mainly using auto-area AF but want to use single on a bride's eye when needed. Furthermore, AF compat focus point and -3 EV* at all other points enables you to subjects such as a bride in a white dress.

* At ISO 100 and 20°C/68°F.

Simplified adjustment for more accurate

Accurate AF is crucial to take full advantage of the D850 makes subtle adjustments for each type of lens you use automatically acquire, then store, the AF tuning value.



**Accuracy in manual focus —
Electronic rangefinder with improved precision**

In addition to offering superb autofocus performance, the D850 also makes manual focusing more precise. Its electronic rangefinder identifies whether a subject is in focus accurately than ever before, allowing you to capture sharp images when focusing in manual mode, or using a manual focus lens.



In-focus indicator

**Early confirm your entire view —
X optical viewfinder**

The D850 provides a wide field of view for easier subject confirmation with a 0.75x magnification* for its optical viewfinder — the highest ever offered by a Nikon FX-format D-SLR. The viewfinder has been redesigned to employ an aspherical lens, new condenser lens with refined refraction, allowing for a slimmer body while giving a sufficiently long eye point. Its high-contrast viewfinder information display uses organic EL display elements, making it easier to read even under bright sunlight.

*1/1.4 lens at infinity, -1.0 m⁻¹.



Nail the shot with full detail and no mechanical vibration or shutter release sound — Silk photography at 45 megapixels

When you're capturing the moment a couple ties the knot during a wedding ceremony, the sound of a camera shutter might be a little out of atmosphere. The D850's silent photography function*1; i mode utilizes an electronic shutter instead of triggering or shutter movement, meaning it doesn't cause any mechanical vibration. Photographers can capture every last detail in megapixels — and in complete silence. This mode can shoot in approx. 6-fps continuous shooting, but can also shoot 8.6-megapixel pictures in DX image area at approx. 30 fps*2.

*1 In M and A modes. Aperture drive sound occurs in P and S modes.

*2 Continuous shooting is available for up to approx. 3 s.

Note: Rolling shutter distortion may occur during silent photography. AF/AE lock first frame in continuous shooting.

• Lens: AF-S NIKKOR 70-200mm f/2.8E FLED VR • Exposure: [A] mode, 1/8000 second.

Show your creativity in a social media-friendly format

The D850 introduces a new image area option with a 1:1 aspect ratio, where square images have become increasingly popular. Helping you compose more accurately. You can create a unique image area.



**1 memory card slots for fast and secure data
age — Compatible with XQD and UHS-II
cards**

ble storage media is crucial to all creative work. The D850
res dual slots for XQD and UHS-II SD cards, enabling rapid
ng and writing of the vast data generated from its high-pixel-
image sensor. It also offers a variety of storage options,
lating the ability to store the same data onto two cards for
at backup and recording RAW and JPEG simultaneously onto
ate cards.



**Versatile remote camera control
from a computer — Camera
Control Pro 2 software**

Nikon's Camera Control Pro 2 lets you remotely control the D850 from a computer connected via wired or wireless LAN. Its capabilities have expanded to meet the demands of professional photographers: You can now use it to activate/deactivate live view, as well as release the shutter, start playback and change settings such as AF and metering modes in live view shooting. It also lets you use unified flash control*, enabling you to change the settings of SB-5000 Speedlight units. In studios as well as outdoors, it makes remote camera control more versatile and more efficient.

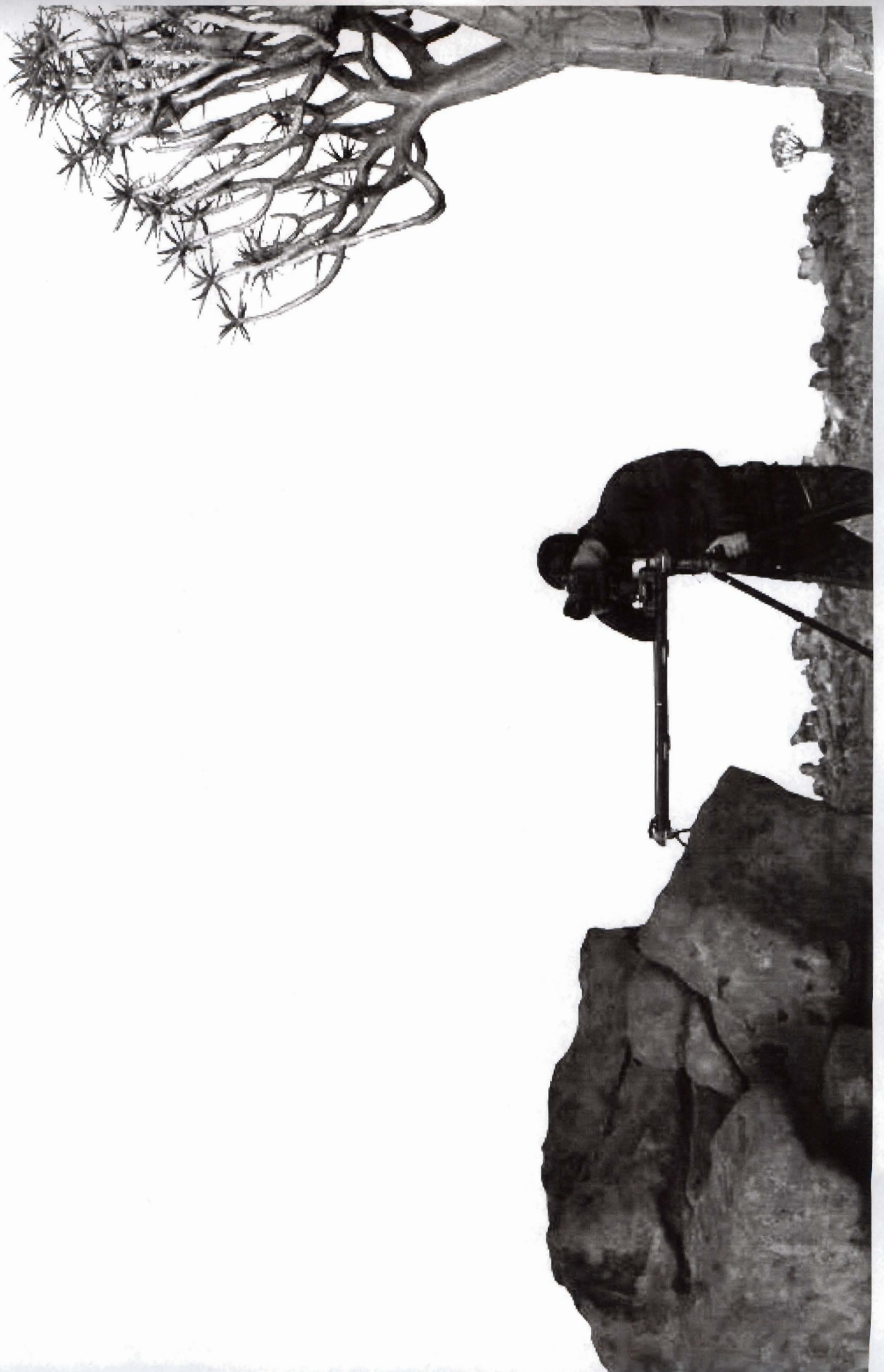
* Camera Control Pro 2 must be Ver. 2.26.0 or later.

**RAW image-processing software
with auto retouch brush —
Capture NX-D (free download)**

Nikon's Capture NX-D software offers the best way of processing original RAW (NEF/NRW) files without losing any of their extremely rich data. It incorporates an auto retouch brush that lets you remove dust spots on pictures. You can also adjust options such as exposure compensation, white balance, Picture Controls and unsharp mask. JPEG and TIFF files are also compatible.

**Optimal management of still
images and movies — ViewNX-i
(free download)**





50: 8256 × 5504

10: 7360 × 4912

UHD: 7680 × 4320

UHD: 3840 × 2160



Shoot time-lapse movie data without relying on interval timer photography

When shooting time-lapse sequences outdoors for hours or mechanical wear. The D850 addresses both of these issues by driving the shutter electronically. The result is a silent shutter that might cause image blur, meaning you'll not let you shoot up to 9,999 frames.

* In P and S modes, aperture drive sound occurs. Note: Rolling shutter distortion may occur during silent photography. For interval image processing, the interval needs to be set more than 2 s

An easy way of shooting time-lapse sequences with low-light metering range

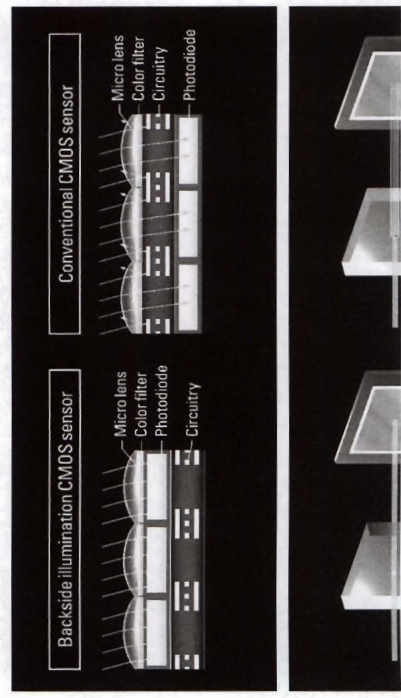
Capturing overnight star movement is a popular application, Nikon's unique feature, which reduces subtle light to the D850. Now it extends exposure metering capability when employed with silent interval timer shooting mode when brightness changes significantly, in one continuous opportunities to delight and impress.

*1 ISO 100, f/1.4 lens and 20°C/68°F. *2 Also available with silent time-lapse and silent focus shift photography.

Extended low-light metering range

Spectacular 8K time-lapse movie creation — 45-megapixel images delivered by a new Nikon FX-format, backside illumination CMOS sensor

The D850 takes your time-lapse movies into a new realm with its high-resolution FX-format CMOS image sensor. Harnessing the vast pixel count of 45 megapixels (8256 × 5504 pixels) with the high resolving power of NIKKOR lenses, the camera's interval timer mode allows you to capture over 8K-size images with exquisite detail for time-lapse movie creation*. The AE mechanism also allows greater focus



D850



8K TIME-LAPSE

Time savings in post-production — camera RAW batch processing

Working in RAW gives greater leeway in post-production, letting photographers draw the most from the images they capture. Until now, however, processing RAW has always been extremely time-consuming. The D850 resolves this issue by offering an incredibly efficient, in-camera RAW batch-processing feature, which enables you to quickly apply the same adjustments to selected images. It can process 1000 RAW files* in approx. 25 minutes**. You can save the original RAW files and processed JPEG files on one large-capacity card, or else save the original on XOD and the JPEG on an SD card in the second slot, for easier data management.

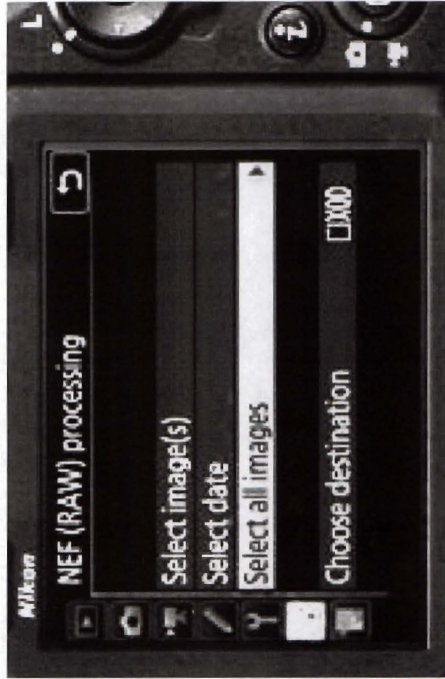
* Converting 14-bit lossless RAW into JPEG fine*. Large. Time varies according to conditions.

** When data is read from SONY SF-G128 (128 GB) SD card and written to Lexar Professional 2933x (128 GB) XOD card.

Other rendering of rapid motion in time-lapse movies — Minimum interval setting of 0.5 s

Capturing scenes with conspicuous motion, such as fast-moving clouds or fog, even a 1 s interval time may result in a sequence that does not look smooth when turned into a time-lapse movie. The D850 now offers a minimum interval setting of just 0.5 s* for interval timer shooting. This renders movements more smoothly, while giving you greater flexibility in achieving your creative intentions.

* Depending on camera settings. Use of an XOD card with 400 MB/s writing speed is recommended.



14-bit lossless RAW

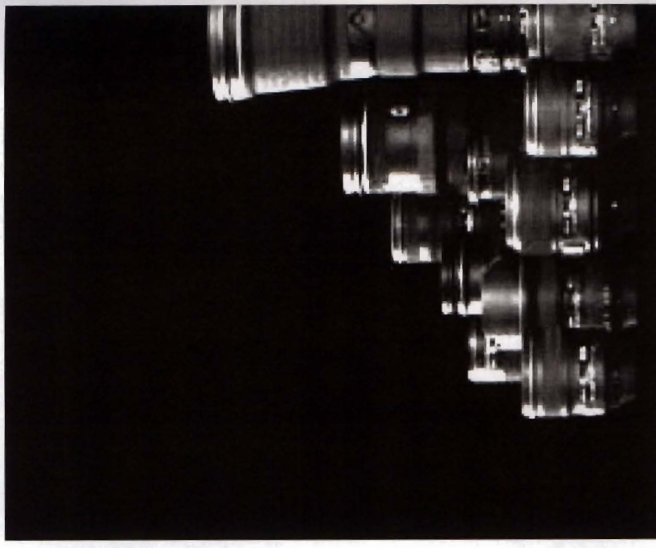
Approx. 25 min.

JPEG fine *, Large

Note: When data is read from SONY SF-G128 (128 GB) SD card and written to Lexar Professional 2933x (128 GB) XOD card.

Unparalleled resolving power to match 4

With their exceptionally high resolving power, which makes them photographers in every field to better capture the essential optical technology, they provide sharp resolution even in low-light conditions. Many lenses feature the anti-reflective ARNE coating to reproduce point light sources as point images as much as possible, to produce sharp images regardless of the subject, environment, or lighting conditions.



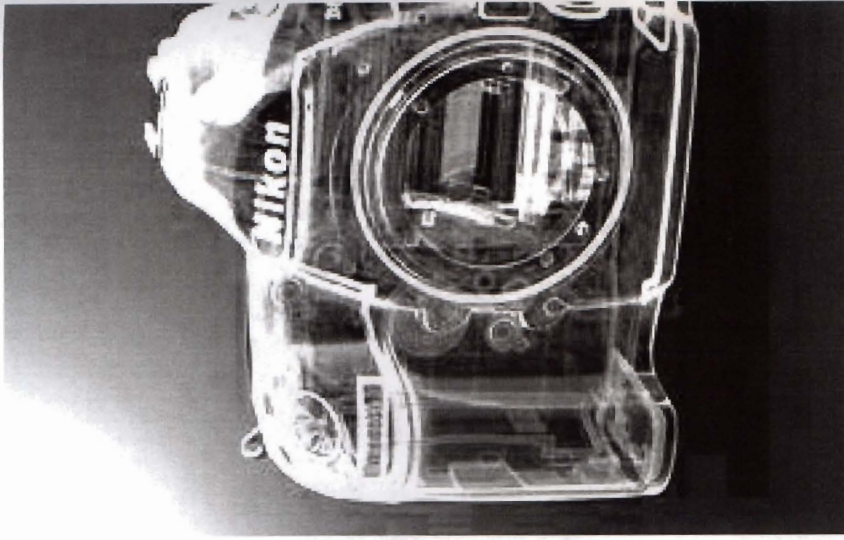


- Exposure: [M] mode, 20 seconds, f/2.8
 - White balance: Color temperature (3600 K)
 - Sensitivity: ISO 3200
 - Picture Control: Standard
- © Marsel van Oosten



NIKOR 20mm f/1.8G ED

20 mm lens enables photographic expression utilizing the shallow depth of field achieved at the maximum aperture of f/1.8. The latest optical technology delivers high resolution and superb point-image reproduction while minimizing chromatic aberration. ED glass elements and Crystal Coat ensure superior image quality. A great choice for landscapes and indoor scenes.



Keep shooting under harsh conditions — Superior weather-/dust-resistant perform and a robust body

When working outdoors for extended periods, time-lap: photographers regularly expose their camera bodies to conditions. Nikon has applied its stringently high standard: weather resistance and durability, renowned in the field photography and science alike, to the D850. It has come with weather- and dust-sealing applied to its joints and seams top, rear and bottom covers, as well as the inside body are made of robust magnesium alloy. It's a camera that to work with confidence in a wide range of tough envirt



Ergonomic operation offers confidence even in the dark — Button illumination and layout

superb performance of the D850, such as its low noise at high ISO settings and wide detection range for AE, encourages time-lapse photographers to venture out in the dark and create amazing images from challenging situations. The camera offers illuminated buttons on the left side and release mode dial, making it easier to change settings when shooting in the dark. Moreover, the buttons and dials are arranged in a convenient ergonomic layout to fit photographers' hands. The rear side now features a sub-selector added in the same position as for the D5, allowing easier right-handed operation by photographers who use both models.

Greater convenience in the field — Touch-operable, tilting monitor

3.2-in. 2359k-dot monitor

Dual memory card slots for fast and secure storage — Compatible with XQD and UHS-II cards

Making time-lapse movies involves an enormous volume of data, so fast and reliable storage media is essential. The D850 offers dual slots for XQD and UHS-II SD cards, enabling rapid writing of the vast data generated from its high-pixel-count sensor. It also offers a variety of storage options, including the ability to store the same data onto two cards for instant backup. Recording RAW and JPEG simultaneously onto separate

Shoot for extended periods without worry

Capturing a time-lapse sequence from dusk till dawn places a heavy demand on the camera's battery. The D850 allows you to concentrate on shooting instead of worrying about battery life. The camera can shoot up to approximately 1,640 still images on a single charge with the EN-EL15 Rechargeable Li-ion Battery. An optional weather- and dust-resistant battery grip can also be used as a power source, enabling shooting of up to

*1 Based on CIPA Standards.

*2 Based on CIPA Standards. With the EN-EL15a/EN-EL15 Rechargeable Li-ion Battery. Optional BL-5 Battery Chamber Cover required for use of the EN-EL15a.

Maximum number of pictures that can be shot per second (single-frame release mode, CIPA Standards)

D850

1840 still images*1

D810

1200 still images*2

Create high-resolution 4K UHD time-lapses

If you want to create high-resolution time-lapse movies, the 4K UHD time-lapse function comes in handy. Since it converts full-pixel (oversampling) resolution quality with ease, in-camera time-lapse is available



Dynamic wide-angle movies, in high resolution — Nikon's first full-frame, 4K UHD video

D850 lets you film magnificent 4K UHD/30p videos in full frame. You can capture dramatic scenes by combining this with wide-angle NIKKOR lenses, which demonstrate high resolving power even around the periphery of the frame. It is also able to simultaneously record uncompressed, broadcast quality 4:2:2 8-bit 4K UHD in an external HDMI device. 4K UHD videos are also available in the DX-based movie format — equivalent to super 35mm size — while recording in MP4 format is possible in addition to the conventional MOV option.

The aspect ratio is 16:9.



D850



D5

Take beautifully clean 4K UHD videos even in dark scenes — Superior low-noise performance in high ISO settings

Even in dark scenes, you can rely on the D850 for consistently sharp video with low noise. Despite the great leap in effective pixel count from the D810, the camera achieves a wider sensitivity range of ISO 64-25600 for both stills and movie thanks to the greater light-gathering efficiency of the new illumination CMOS structure, and the EXPEED 5 image-processing engine's ability to effectively reduce noise while maintaining its ability to widen the possibilities for your shooting by increasing sensitivity up to Hi 2 (ISO 102400 equivalent). The D850 enables videographers to explore their creativity in a variety of situations.

Automatic adjustment to brightness changes

Imagine filming a scene where the brightness changes from one take. The Auto ISO function in M mode ensures the camera maintains a specific depth of field and shutter speed. This helps a

Turn dramatic moments into drama — x4 and x5 slow-motion movie in Full HD

D850 helps create dramatic Full HD movies with its new in-camera slow-motion video*. It can generate both x4 slow-motion videos (films at 120p and records at 30/25p) and x5 slow-motion videos (films at 120p and records at 24p) entirely in-camera — great for creating dramatic outtakes.

*AF-area modes are limited to normal-area and wide-area AF. No audio recording.



Rich image information for easy post-production

If you plan a video creation workflow that includes image manipulation to acquire as much information as possible — including adjustments of the tone curve, without requiring technical expertise — you will appreciate the creative potential and ease of use.



defining strength of your 4K UHD video creation — Incredibly sharp NIKKOR lenses

High-performance lenses with high resolving power can draw out the full potential of 4K UHD video. The diverse NIKKOR lens lineup, from wide angle to telephoto, features superior optical performance and reliability, highly praised by cinematographers around the world. The AF-S system delivers high resolution even in the peripheral areas of the frame, elaborately designed bokeh characteristics that depict subject matter with natural depth, and high reproduction capability for point light sources even at the maximum aperture. These features empower you to create the movie productions of your dreams.



AF-S NIKKOR 14-24mm f/2.8G ED

With a fixed maximum aperture of f/2.8, this award-winning professional lens delivers edge-to-edge sharpness across the frame. Nano Crystal Coat and ED glass ensure outstanding contrast, even in backlit conditions. Tough and reliable, this is essential glass for professional multimedia creators.

AF-S NIKKOR 24mm f/1.4G ED

The greatest advantage of this versatile wide-angle lens is its amazingly beautiful bokeh at f/1.4 while covering an 84° angle of view. Its optical design now reveals more refined detail with even less aberration. In addition,

Quickly switch between still-photo and movie shooting — Independent movie-shooting menu

The D850 is designed for multimedia shooters who consider stills and movies equally important. With that in mind, this camera introduces a dedicated movie-shooting menu in addition to the one for still photography. You can register different video without changing those for stills, which makes it easy to switch between the two shooting modes. For example, the stills in Auto Picture Control is possible even immediately after filming in Flat. What's more, pressing the **z** button during recording gives you direct access to the movie-shooting menu, providing both convenience and efficiency during your



Customizable highlight confirmation with even greater ease — Improved highlight display

Highlight display using zebra patterns helps you confirm overblown highlights, and the D850 has improved this function to assist you further. It now lets you adjust the level of brightness, to be indicated between 180-255 depending on your needs. What's more, the zebra patterns come in two varieties, selectable according to the patterns and textures of your subjects.



Accurate manual focus confirmation — Focus peaking display

Many professional videographers use manual focus for accurate focusing. The D850's focus peaking display* makes it easier to confirm manual focus. The camera detects the scene's highest-contrast edges — meaning they are in focus — and highlights them in designated color. You can choose to display highlights in red, green, yellow or blue, according to your subject's own coloration, and adjust between three levels of detection sensitivity. For users' convenience, this peaking information will not be recorded on the external device when connected via HDMI.

* Available with Full HD and HD.



Confident hand-held video shooting — Electronic vibration reduction

When shooting movies hand-held in Full HD or HD, the electronic vibration reduction function* reduces the effect of camera shake in the horizontal, vertical and rotational (centering on the lens). This is invaluable when limitations of hand-held shooting make it difficult to set up a tripod. Used in conjunction with NIKKOR's optical VR technology, the benefits are even more apparent.

* Image area will be slightly smaller in Full HD.

Preserve details in highlights and shadow — Active D-Lighting

The EXPPEED 5 image-processing engine makes it possible to apply Active D-Lighting to Full HD and HD movies. This popular function in still-photo shooting preserves details in highlights and shadows when recording high-contrast scenes, giving your footage richer tonal gradation and a more natural brightness. This comes in handy when you need to use footage straight out of the camera without post-production editing.

More reliable sound control — Attenuator menu

When filming out of the studio, audio levels can escalate unexpectedly, causing distortion. The D850 incorporates an attenuator menu to avoid such accidental occurrences. When activated, it automatically reduces the microphone sensitivity to the

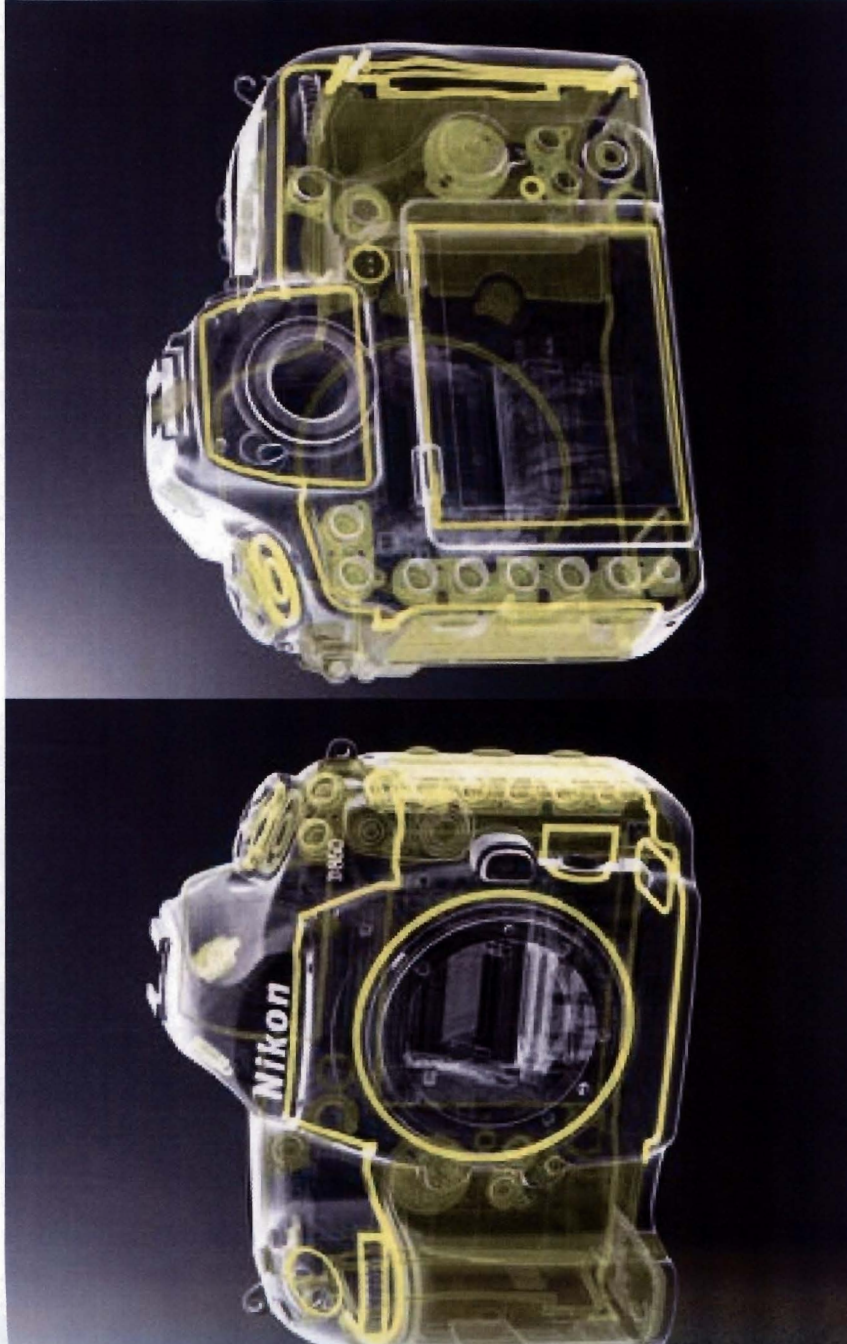
BRING YOUR FILM PICT WITH THE HIGH-RESOL

The quick, easy way to convert film to digi

Some seasoned photographers may be exploring ways old cameras into digital data. Taking advantage of its hi D850 offers an option for digitizing film (35mm-format), v negatives. First, set an optional ES-2 Film Digitizing Ada NIKKOR 60mm f/2.8G ED attached to the D850. Then, ins Film Holder or FH-5 Slide Mount Holder, and shoot. The reverses the colors and stores them as JPEG images. T involving a film scanner can be done much more quick! friends while selecting and digitizing by displaying their HDMI cable. Enjoy your old film images by digitizing the

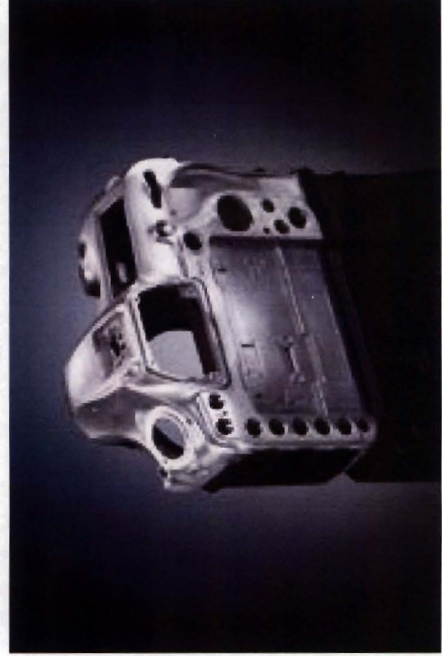


Negative Film (Color/Black & White)



Superior performance under harsh conditions — Superior weather-/dust-proof performance and a robust body

Comprehensive, high-performance, professional movie cameras often be taken to sandy or rainy outdoor locations. Nikon has designed its stringently high standards for weather resistance and durability, renowned in the fields of photography and science to the D850. It has comprehensive weather- and dust-sealing to its joints and seams, and its top, rear and bottom covers, as well as the inside body structure, are made of robust magnesium. It's a camera that allows you to work with confidence in a range of tough environments.



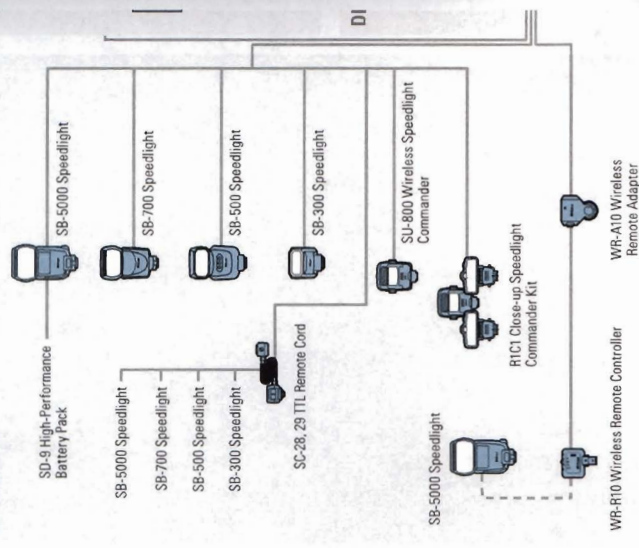
	D850	D5	D750
Image sensor size and resolution			
Image sensor size	35.9 x 23.9 mm (FX)	35.9 x 23.9 mm (FX)	35.9 x 24.0 mm (FX)
Effective megapixels	45.7 megapixels	20.8 megapixels	24.3 megapixels
Backside illumination CMOS sensor structure	Yes	No	No
Image quality			
Image-processing engine	EXPEED 5	EXPEED 5	EXPEED 4
Sensitivity range	ISO 64 to 25600 Expandable down to ISO 32 and up to ISO 102400	ISO 100 to 102400 Expandable down to ISO 50 and up to ISO 328000	ISO 100 to 12800 Expandable down to ISO 50 and up to ISO 51200
Picture Control Auto	Yes	No	No
Picture Control Flat	Yes	Yes	Yes
RAW file size options	RAW L, M, S*	RAW L, M, S*	RAW L
File format	<ul style="list-style-type: none"> 12-/14-bit uncompressed/lossless compressed/compressed NEF (RAW)*1 TIFF JPEG NEF (RAW) + JPEG 	<ul style="list-style-type: none"> 12-/14-bit uncompressed/lossless compressed/compressed NEF (RAW)*1 TIFF JPEG NEF (RAW) + JPEG 	<ul style="list-style-type: none"> 12-/14-bit lossless compressed/compressed NEF (RAW) JPEG NEF (RAW) + JPEG
RAW batch processing	Yes	No	No
AF			
AF system	153 focus points: 99 cross-type sensors, 15 f/8-compatible points	153 focus points: 99 cross-type sensors, 15 f/8-compatible points	51 focus points: 15 cross-type sensors, 11 f/8-compatible points
AF detection range*2	-4 to 20 EV	-4 to 20 EV	-3 to 19 EV
AF lock on	Adjustable with two parameters; blocked shot AF response and subject motion	Adjustable with two parameters; blocked shot AF response and subject motion	Adjustable by strength levels only
AF fine-tune	Yes	Yes	No
AF point AF (live view)	Yes	No	No
AE			
AE metering sensor	180K-pixel RGB sensor	180K-pixel RGB sensor	91K-pixel RGB sensor
AE metering detection range*3	-3 to 20 EV	-3 to 20 EV	0 to 20 EV
AF-assisted shutter release smoothing function (interval-timer/in-camera time-lapse)	Yes	Yes	Yes

D8:

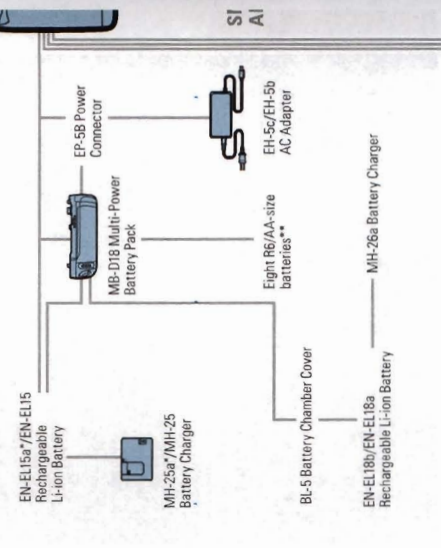
Silent photography	<ul style="list-style-type: none"> Silent photography 6 fps or 8.6 MP/ap format, JPEG norm Silent interval-time Silent time-lapse r Silent focus shift f
Quiet photography	Yes
Electronic front-curtain shutter	Available in Mup, Q, z
Frame advance rate	Up to approx. 9*4 or 7
Buffer capacity NEF (RAW), 14-bit lossless compressed	51 shots
Unlimited continuous shooting at slow shutter speeds	Yes
Shutter speeds	1/8000 to 30 s in step 1 EV, bulb, time, X25C
M	
4K UHD/30p recording	Yes (Full frame)
Full HD recording frame rates	60p, 50p, 30p, 25p ar
Image area options	FX- and DX-based mc
In-camera slow motion	30p/25p x 4 and 24p At Full HD in DX-base
In-camera time-lapse movie	4K UHD and Full HD
ISO sensitivity range	ISO 64 to 25600 Expandable up to ISO
Auto ISO control in M mode	Yes
Highlight-weighted metering	Yes
Active D-Lighting for movies	Yes (Full HD)

	D850	D5	D750
Movie audio recording			
Autofocus	Yes	No	No
Audio recording format	Linear PCM or AAC	Linear PCM	Linear PCM
Recordable audio frequency range	Wide or voice	Wide or voice	Wide or voice
Image viewing			
Real viewfinder magnification**	0.75x	0.72x	0.7x
Viewfinder monitor	3.2 in. 2359k dot	3.2 in. 2359k dot	3.2 in. 1229k dot
Touch screen	Yes	No	Yes
Touch-screen function	Yes (including fully touch-operable menu screens and Z button menu and touch shutter release)	Yes	No
Advanced features			
Maximum interval for interval-timer photography	0.5 s	0.5 s	1 s
Multiple exposure modes	Add, average, lighten overlay and darken overlay	Add, average, lighten overlay and darken overlay	Auto gain on and off
Still shift photography	Yes	No	No
Image area	Yes	No	No
Active digitizer	Yes	No	No
Camera handling			
Flash illumination	Yes	Yes	No
Flash selector	Yes	Yes	No
Flash buttons	2	3	1
Memory card slots	SD + XQD	2 x XQD or 2 x CF	2 x SD
Flasher durability	200,000 cycles	400,000 cycles	150,000 cycles
Power Battery Pack	MB-D18	No	MB-D16
Speedlight control			
Flash in flash	No	No	Yes
Flash-controlled Advanced Wireless Lighting compatibility	Yes	Yes	No

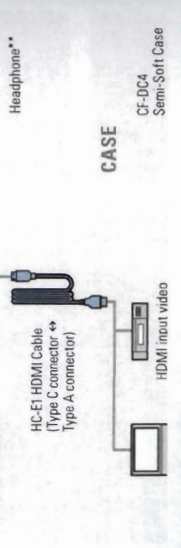
SPEEDLIGHTS



AC ADAPTERS, BATTERIES AND CHARGERS



TV AND VIDEO ACCESSORIES



Specifications and equipment are subject to change without any notice or obligation on the part of the manufacturer. August 2017

©2017 Nikon Inc.



WARNING

TO ENSURE CORRECT USAGE, READ MANUALS CAREFULLY BEFORE USING YOUR EQUIPMENT.





Tokina AT-X 24-70mm f/2.8 PRO FX Lens for Nikon F

Tokina AT-X 24-70mm F/2.8 PRO FX Specs

Focal Length	24 to 70mm
Maximum Aperture	f/2.8
Minimum Aperture	f/22
Lens Mount	Nikon F
Lens Format Coverage	Full-Frame
Angle of View	84° 20' to 34° 49'
Minimum Focus Distance	1.25' / 38 cm
Maximum Magnification	0.21x

Optical Design	15 Elements in 11 Groups
Diaphragm Blades	9
Focus Type	Autofocus
Image Stabilization	<i>None</i>
Filter Size	82 mm (Front)
Dimensions (ø x L)	3.53 x 4.23" / 89.6 x 107.5 mm
Weight	2.2 lb / 1 kg

Tamron SP 70-200mm F/2.8 Di VC G2 for Nikon FX DSLR (6 Year Limited USA Warranty for New Lenses Only)



Brand	Tamron
Lens Type	Telephoto
Compatible Mountings	Nikon FX

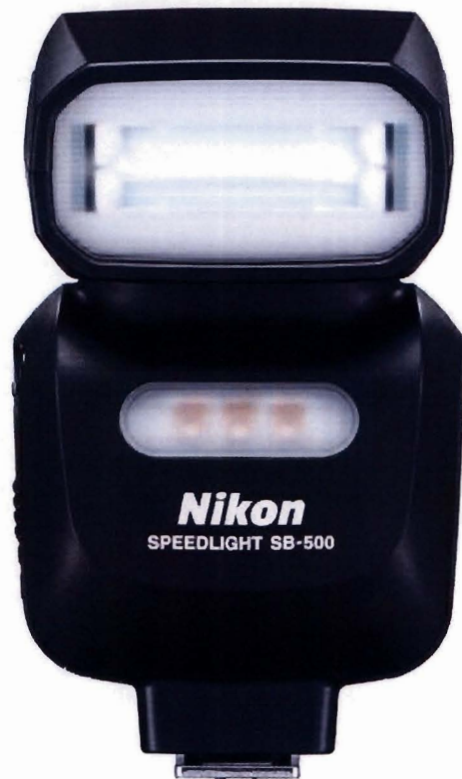
Camera Lens Description 200 millimetres

Maximum Focal Length 200

About this item

- VC performance is 5 stops (VC mode 3) and offers three modes optimized for different shooting situations
- MOD reduced to 37.4" (1:6.1 max. mag. Ratio). Angle of view (diagonal): 34°21' - 12°21'(for full-frame format), 22°33' - 7°59'(for APS-C format)
- Lightweight and easy-to-hold tripod mount is compatible with an Arca-Swiss style quick release plate
- Compatible with TAMRON TAP-in Console, an optional accessory product; The front surface of the lens element is coated with a protective fluorine compound that is water- and oil-repellant
- Teleconverters (optional) compatible with this new Tamron lens. Aperture Blades:9 (circular diaphragm)

Nikon SB-500 AF Speedlight



Nikon SB-500 Specs

Flash Head

Guide Number	78.74' / 24 m at ISO 100
Coverage	Full-Frame 24 mm
Angle of Coverage	84°
Bounce Head	0 to +90°
Swivel Head	360°
Flash Duration	1/1100 Second at Full Power
Recycle Time	Approx. 3.5 to 30 Seconds
Secondary Illumination	Video Light
Exposure Control	
Exposure Control	Nikon i-TTL
Flash Modes	Hi-Speed Sync, Second-Curtain Sync, Slow Sync
Flash Compensation	-3 to +1 EV (1/3 EV Steps)
Wireless	
Wireless Operation	Optical Pulse (TTL) Up to 32.81' / 10 m (Commander, Slave)
Wireless Channels	4
Wireless Groups	2
Power	
Internal Power	2 x AA (Alkaline, NiMH)
External Power Pack Compatible	No
General	
Mount	Shoe
Off-Camera Terminal	None
Dimensions (W x H x D)	2.6 x 4.5 x 2.8" / 67 x 114.5 x 70.8 mm

Nikon EN-EL15c Rechargeable Li-ion Battery for Compatible Nikon DSLR and Mirrorless Cameras (Genuine Nikon Accessory)



Number of Batteries	1 Lithium ion batteries required. (included)
Brand	Nikon
Battery Cell Composition	Lithium Ion
Recommended Uses For Product	Camera
Unit Count	1 Count

About this item

- The EN-EL15c is a Rechargeable Lithium-ion battery for use with select Nikon cameras.
- Compatible With Nikon Models: Z 7II, Z 6II, Z 5, Z 7, Z 6, D780, D850, MB-N11 Power Battery Pack
- Compatible with MH-25a Battery Charger
- This battery can be charged with the EH-7P charging AC adapter, when used with Nikon cameras that have the capability to charge batteries in-camera.



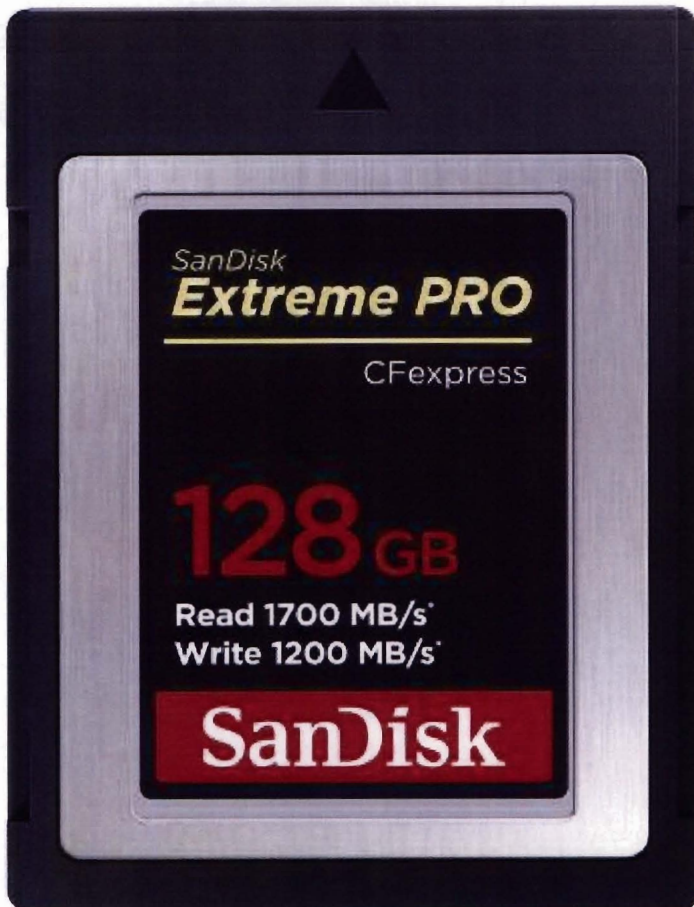
Nikon MB-D18 Battery Grip for D850,Black,7.2 x 4.06 x 4.06 inches

Brand	Nikon
Battery Cell Composition	Lithium Ion
Unit Count	1 Count
Reusability	Rechargeable
Model Name	MB-D18 Multi Battery Power Pack

About this item

- **COMPATIBILITY:** Designed for use with Nikon D850 DSLR
- To use with AA batteries, use the supplied MS-D12 AA Battery Holder
- When using EN-EL15(a) batteries, use the supplied MS-D12EN Battery Holder
- When using an EN-EL18b battery, use the optional BL-5 battery chamber cover
- Shutter-release and AE/AF lock buttons, multi selector and main- and sub-command dials

SanDisk 128GB Extreme PRO CFexpress Card Type B - SDCFE- 128G-GN4NN



Brand	SanDisk
Flash Memory Type	XQD
Hardware Interface	SDHC
Memory Storage Capacity	128 GB
Read Speed	1700 Megabytes Per Second

About this item

- Read speeds of up to 1700MB/s and 1400MB/s write speeds offer low latency during high-speed recording and enhance workflow efficiency far beyond existing SanDisk cards [512GB only; 128GB-256GB = 1700MB/s read / 1200 MB/s write; 64GB = 1500 MB/s read / 800MB/s write]. Up to 1700MB/s read speed; up to 1400MB/s write speed. Based on internal testing; performance may be lower depending upon host device, usage conditions, and other factors. 1MB=1,000,000 bytes.

- Enables smooth, RAW 4K video(1). (1) 4K video (4069x2160p) support may vary based on host device, file attributes, usage conditions and other factors.
- The Cfexpress CardType B is backwards-compatible with select XQD cameras that adopt firmware enabling Cfexpress(2) | (2)Backwards compatibility with select XQD cameras subject to the availability and installation of a camera firmware update provided by the camera manufacturer enabling CFexpress compatibility.
- RescuePRO Deluxe Recovery Software included(3) (download required) | (3)Registration required; terms and conditions apply



Los expertos en tecnología para su oficina

C/ Elvira de Mendoza No. 255, Zona Universitaria
Santo Domingo, República Dominicana
Teléfono: 809-221-2418 / Fax: 809-221-2834
Email: an.bernal@hotmail.com

02 De febrero del 2022

Señores:

JUNTA CENTRAL ELECTORAL


PLAZA DE LA BANDERA
Santo Domingo.

REF: PROCESO: JCE-CCC-CP-2022-0004

Sirva la presente para certificarles que los ítems cotizados en el proceso arriba indicado son nuevos de fábrica y todos los equipos tienen 12 meses de Garantía de fábrica y localmente por nosotros ABM. La garantía excluye: Daños causados por variaciones violenta de voltaje, explosión, terremoto, inundaciones u otra causa ambiental desfavorable.

La entrega es 7 días después de recibir la orden de compras. El crédito es de 30 días. La vigencia de 30 días.

Sin otro particular, quedamos de ustedes.


ANGEL BERNAL
Gerente de Ventas

ABM/HV

