



**TORALCO
CONSTRUCTORA**
INGENIERÍA · DISEÑO · CONSTRUCCIÓN

**e. CRONOGRAMA DE EJECUCION Y DIAGRAMA DE
GANTT**





CRONOGRAMA NAVE ISABEL AGUIAR
 JUNTA CENTRAL ELECTORAL

v.01

ID	Task Mode	WBS	Task Name	Duration	Start	Finish
1		A1	NAVE PARAISO INDUSTRIAL, ISABEL AGUIAR, AREA LOGISTICA ELECTORAL	87 days	Mon 4/9/23	Fri 15/12/23
2		A1-1	TRABAJOS PRELIMINARES	5 days	Mon 4/9/23	Fri 8/9/23
3		A1-1.1	Limpieza del Area	3 days	Mon 4/9/23	Wed 6/9/23
4		A1-1.2	Desmantelar y sustituir plancha acanalada translucida techo (Poli-carbonato)	2 days	Thu 7/9/23	Fri 8/9/23
5		A1-2	ESTRUCTURA METALICA NAVE	8 days	Mon 4/9/23	Wed 13/9/23
6		A1-2.1	Cierre posterior en Peines de Naves en Aluzinc (28 mt2 c/u)	2 days	Thu 7/9/23	Fri 8/9/23
7		A1-2.2	Estructura para Soporte Equipos de Aires Acondicionados (en cables de acero para sostener unidades evaporadoras)	3 days	Mon 11/9/23	Wed 13/9/23
8		A1-2.3	Restauracion y mantenimiento de vigas y columnas metalicas	3 days	Mon 11/9/23	Wed 13/9/23
9		A1-2.4	Pintura Anti oxido para estructura	5 days	Mon 4/9/23	Fri 8/9/23
10		A1-3	MURO DE CIERRE AREA DE LOGISTICA	58 days	Thu 7/9/23	Wed 15/11/23
11		A1-3.1	MOVIMIENTO DE TIERRA	11 days	Thu 7/9/23	Wed 20/9/23
12		A1-3.1.1	Demolicion con Compresor Piso Hormigon Armado Existente para excavacion	3 days	Thu 7/9/23	Mon 11/9/23
13		A1-3.1.2	Excavacion Zapata muros de 6' caliche	5 days	Tue 12/9/23	Sat 16/9/23
14		A1-3.1.3	Excavacion Zapata de Columnas	1 day	Tue 12/9/23	Tue 12/9/23
15		A1-3.1.4	Reileno Compactado de reposicion	3 days	Mon 18/9/23	Wed 20/9/23
16		A1-3.2	HORMIGON ARMADO EN:	25 days	Thu 21/9/23	Thu 19/10/23
17		A1-3.2.1	Zapata de muros 6''	5 days	Thu 21/9/23	Tue 26/9/23
18		A1-3.2.2	Zapata Columnas	4 days	Thu 21/9/23	Mon 25/9/23
19		A1-3.2.3	Columnas Amarre	8 days	Wed 27/9/23	Thu 5/10/23
20		A1-3.2.4	Viga de Amarre	12 days	Fri 6/10/23	Thu 19/10/23
21		A1-3.2.5	Dinteles	2 days	Fri 6/10/23	Sat 7/10/23
22		A1-3.3	MUROS	30 days	Fri 6/10/23	Fri 10/11/23
23		A1-3.3.1	muros de 6''B.N.P	5 days	Fri 6/10/23	Wed 11/10/23

RNC: 781-68910-8
 Registro Mercantil: M366190
 Santo Domingo

NAVE PARAISO INDUSTRIAL, ISABEL AGUIAR, AREA LOGISTICA ELECTORAL

MURO DE CIERRE AREA DE LOGISTICA

TRABAJOS PRELIMINARES

ESTRUCTURA METALICA NAVE

SEPTEMBER 2023

OCTOBER 2023

NOVEMBER 2023

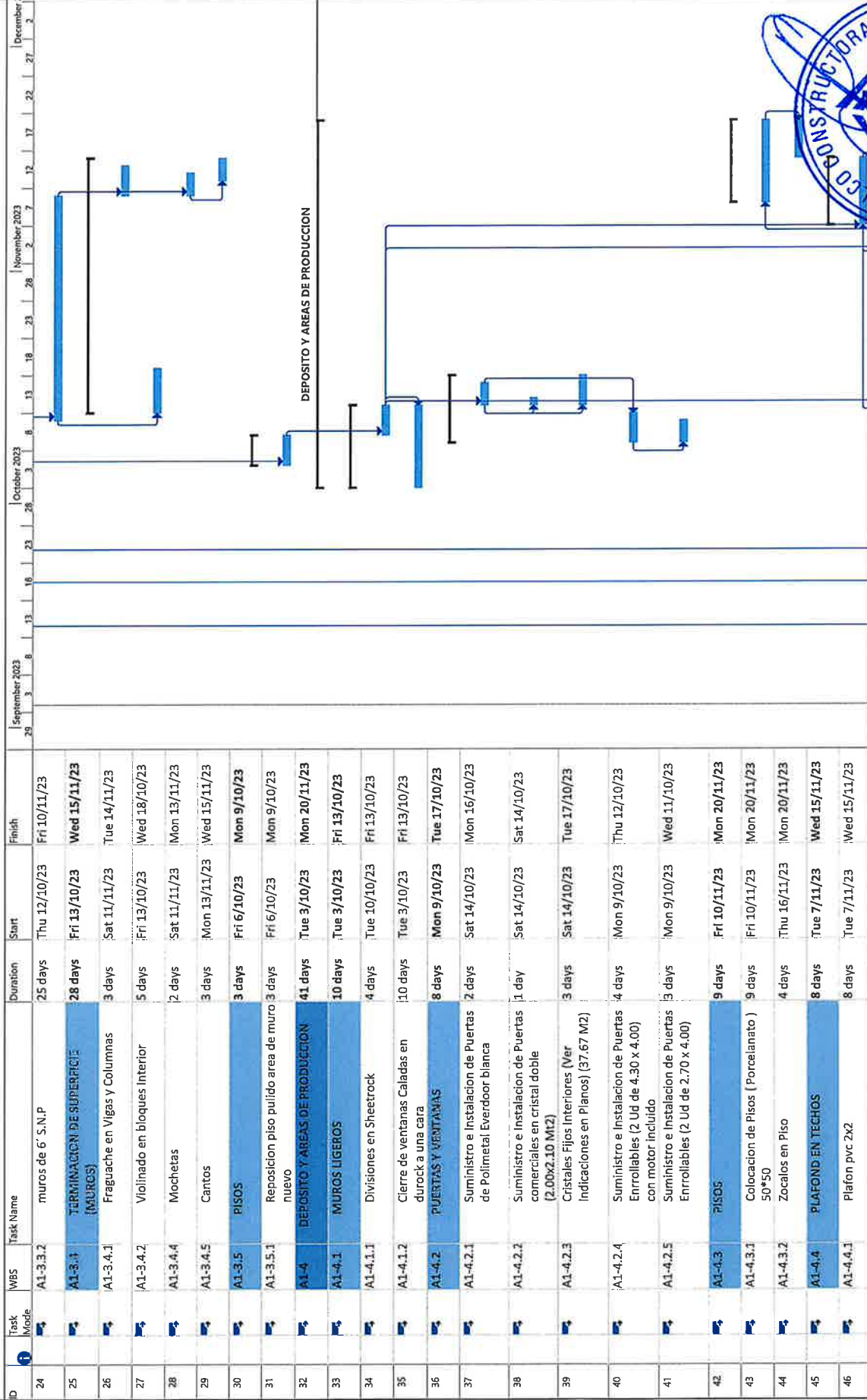
DECEMBER 2023

Task: Project Summary, Inactive Task, Inactive Milestone, Inactive Summary

Task Mode: Start-only, Finish-only, External Tasks, External Milestone

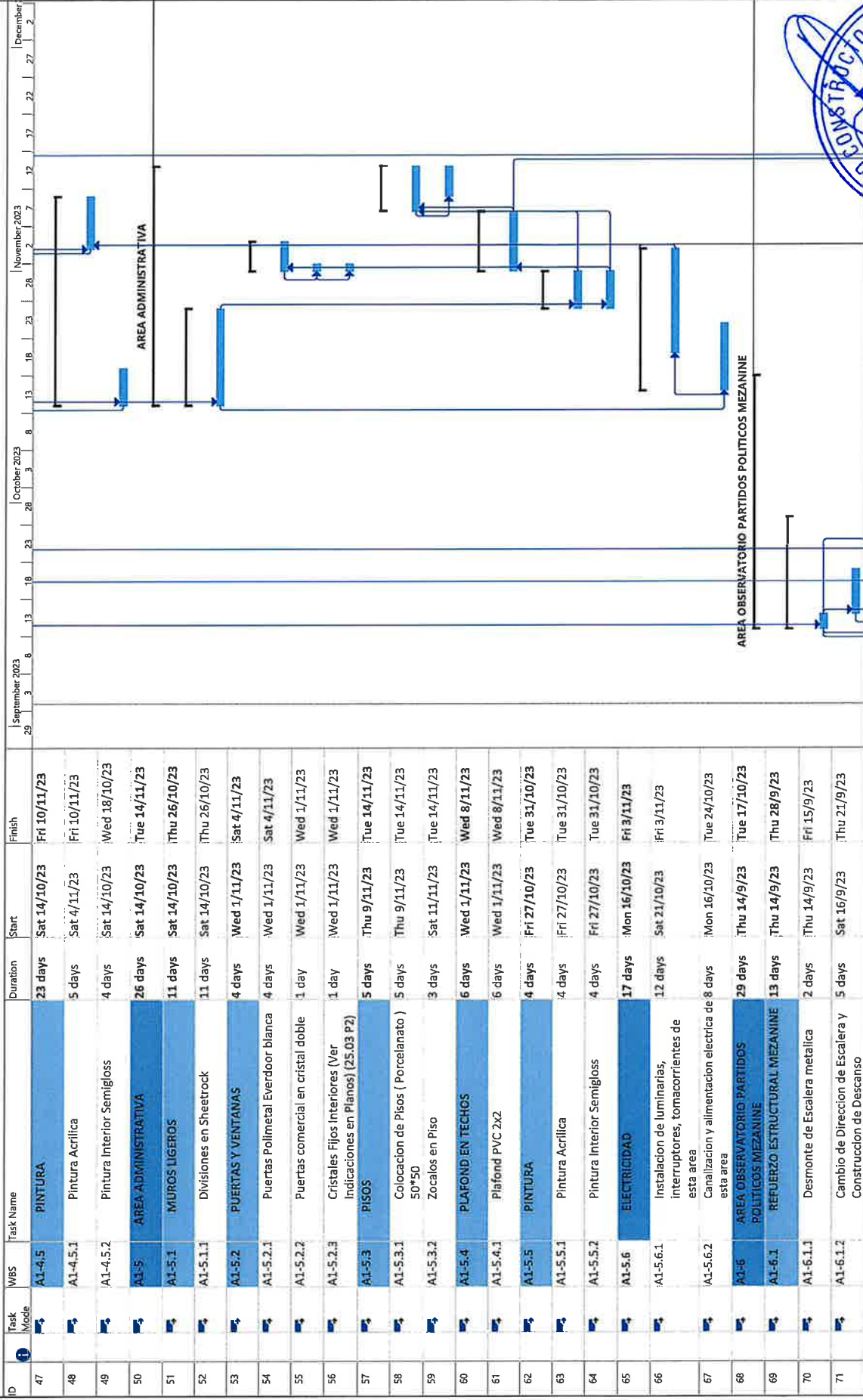
Task: Manual Task, Duration-only, Manual Summary Rollup, Manual Summary

Task: Deadline, Progress, Manual Progress



Project: Cronograma
Date: Wed 21/6/23

Task: Task, Split, Milestone, Summary
Project Summary: Project Summary, Inactive Task, Inactive Milestone, Inactive Summary
Manual Task: Manual Task, Duration-only, Manual Summary Rollup, Manual Summary
Start-only: Start-only, Finish-only, External Milestone
Deadline: Deadline, Progress, Manual Progress



Task Split Milestone Summary

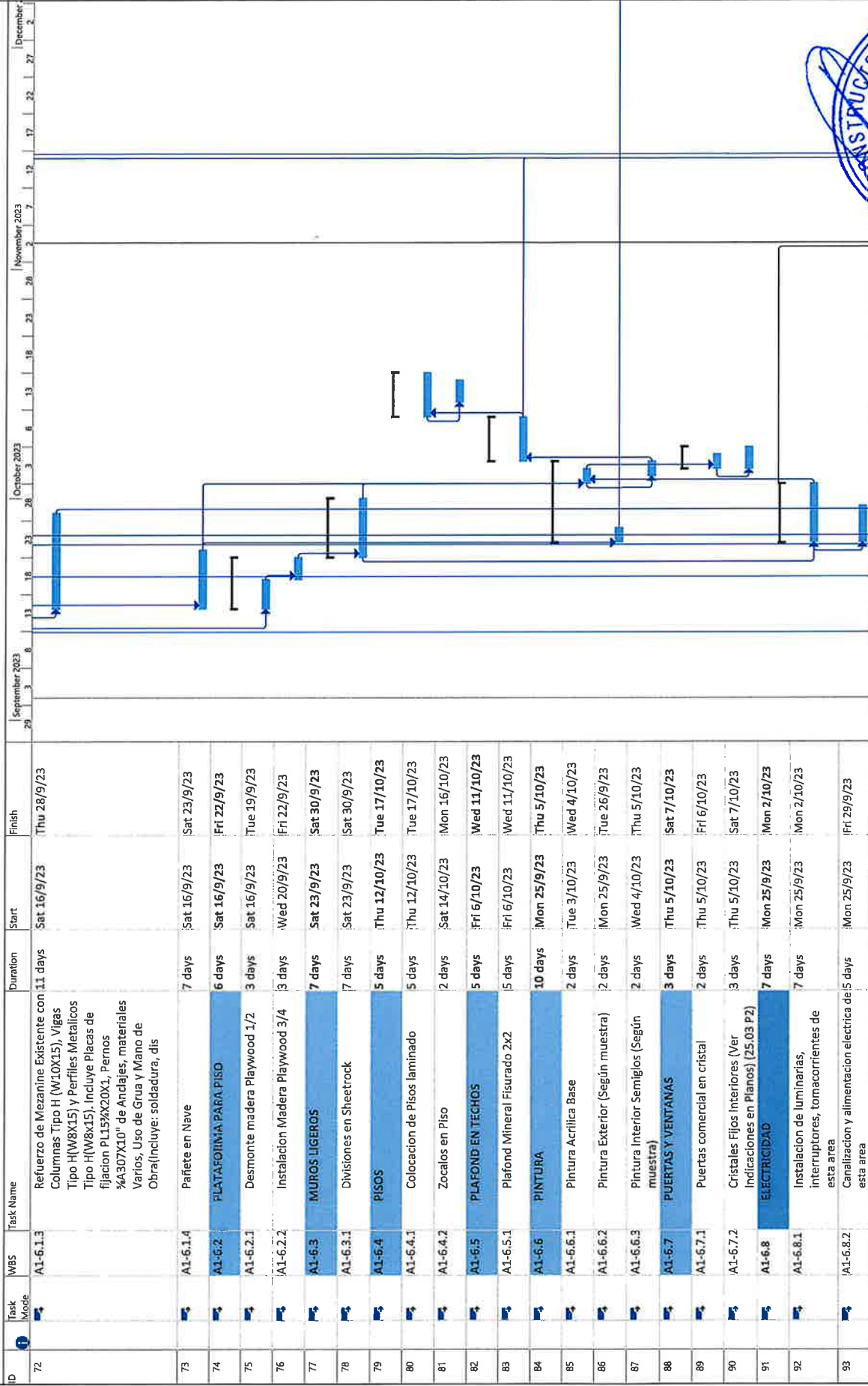
Project Summary Inactive Task Inactive Milestone Inactive Summary

Manual Task Duration-only Manual Summary Rollup Manual Summary

Start-only Finish-only External Tasks External Milestone

Deadline Progress Manual Progress



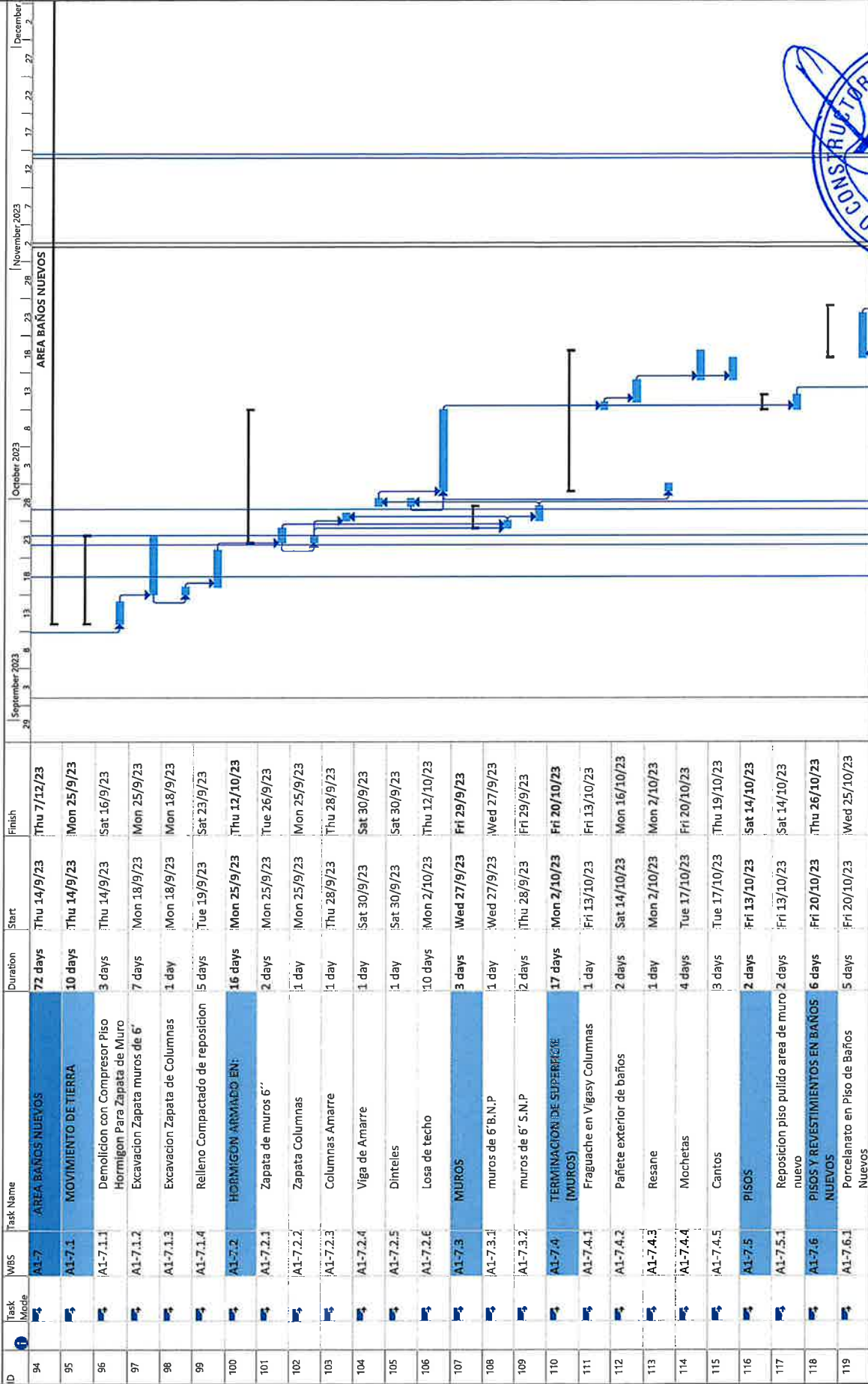


Task Legend:

- Task
- Split
- Milestone
- Summary
- Project Summary
- Inactive Task
- Inactive Milestone
- Inactive Summary
- Manual Task
- Duration-only
- Manual Summary Rollup
- Manual Summary
- Start-only
- Finish-only
- External Tasks
- External Milestone
- Deadline
- Progress
- Manual Progress

Project: Cronograma
Date: Wed 21/6/23





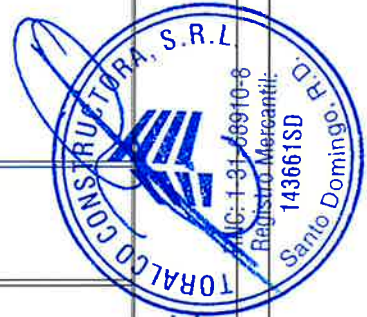
Project: Cronograma
Date: Wed 21/6/23

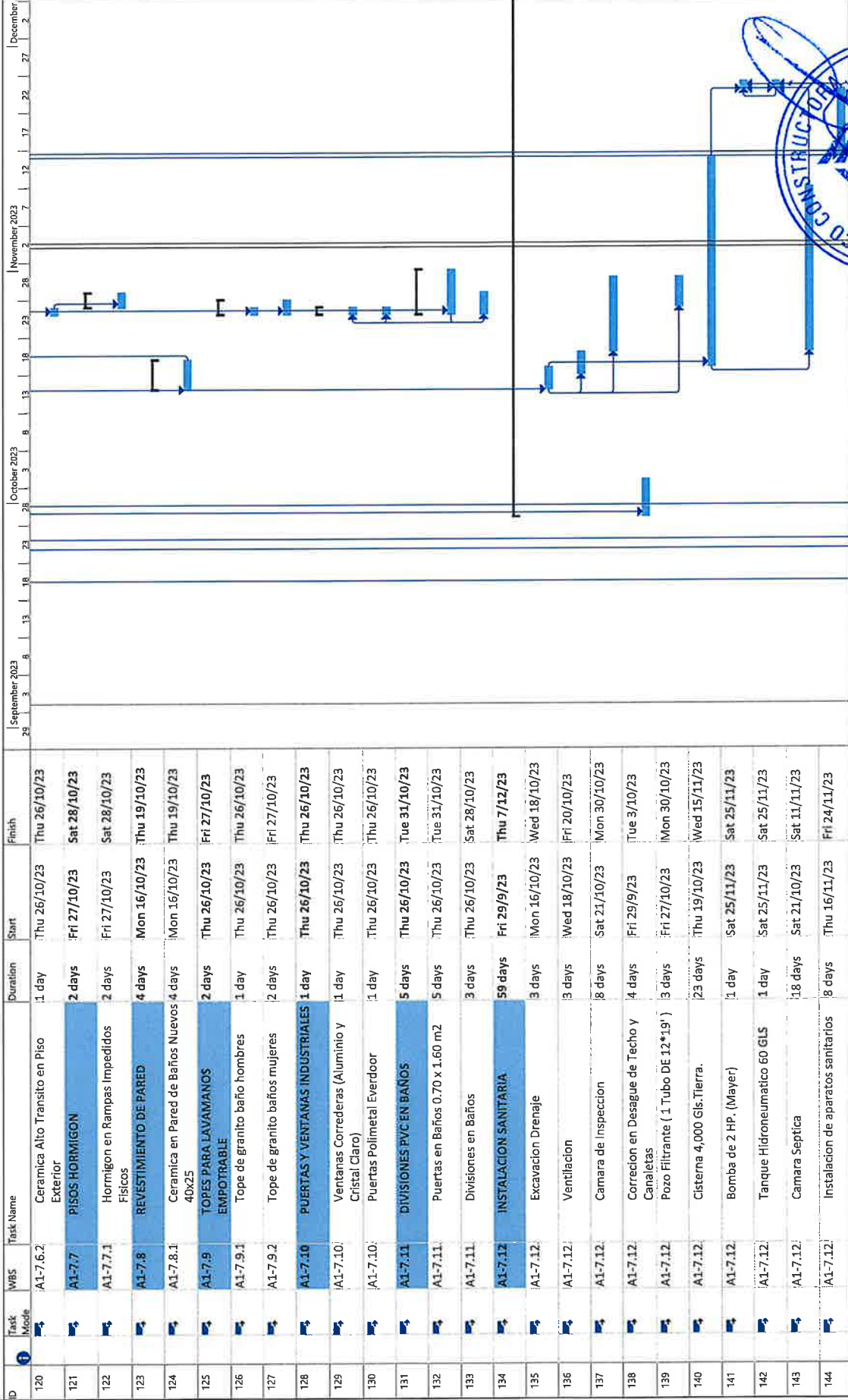
Task Summary
Project Summary
Inactive Task
Inactive Milestone
Inactive Summary

Manual Task
Duration-only
Manual Summary Rollup
Manual Summary

Start-only
Finish-only
External Task
External Milestone

Deadline
Progress
Manual Progress





Project: Cronograma
Date: Wed 21/6/23

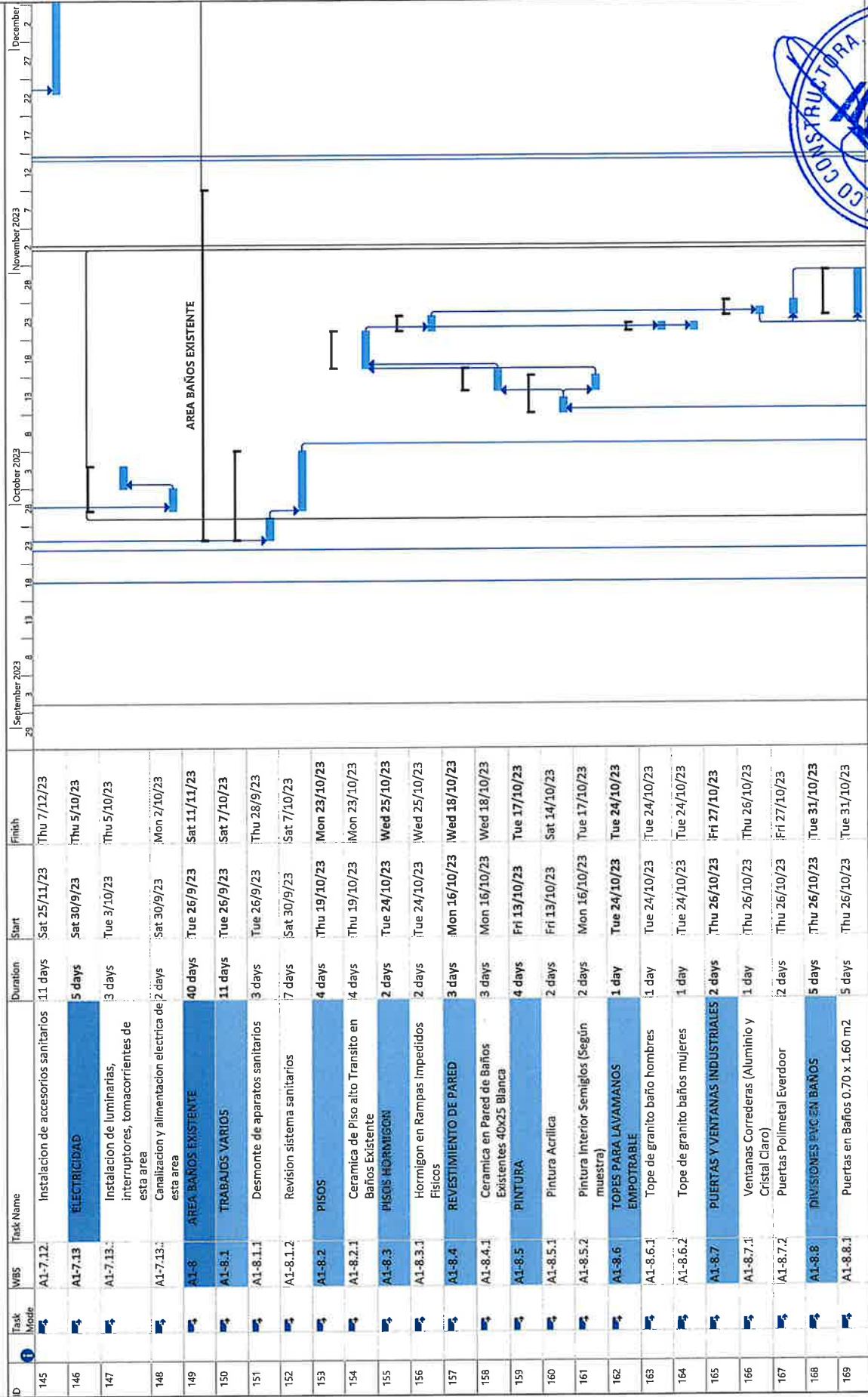
Task: [Task Icon] Milestone: [Milestone Icon] Summary: [Summary Icon]

Project Summary: [Project Summary Icon] Inactive Task: [Inactive Task Icon] Inactive Milestone: [Inactive Milestone Icon] Inactive Summary: [Inactive Summary Icon]

Manual Task: [Manual Task Icon] Duration-only: [Duration-only Icon] Manual Summary Rollup: [Manual Summary Rollup Icon] Manual Summary: [Manual Summary Icon]

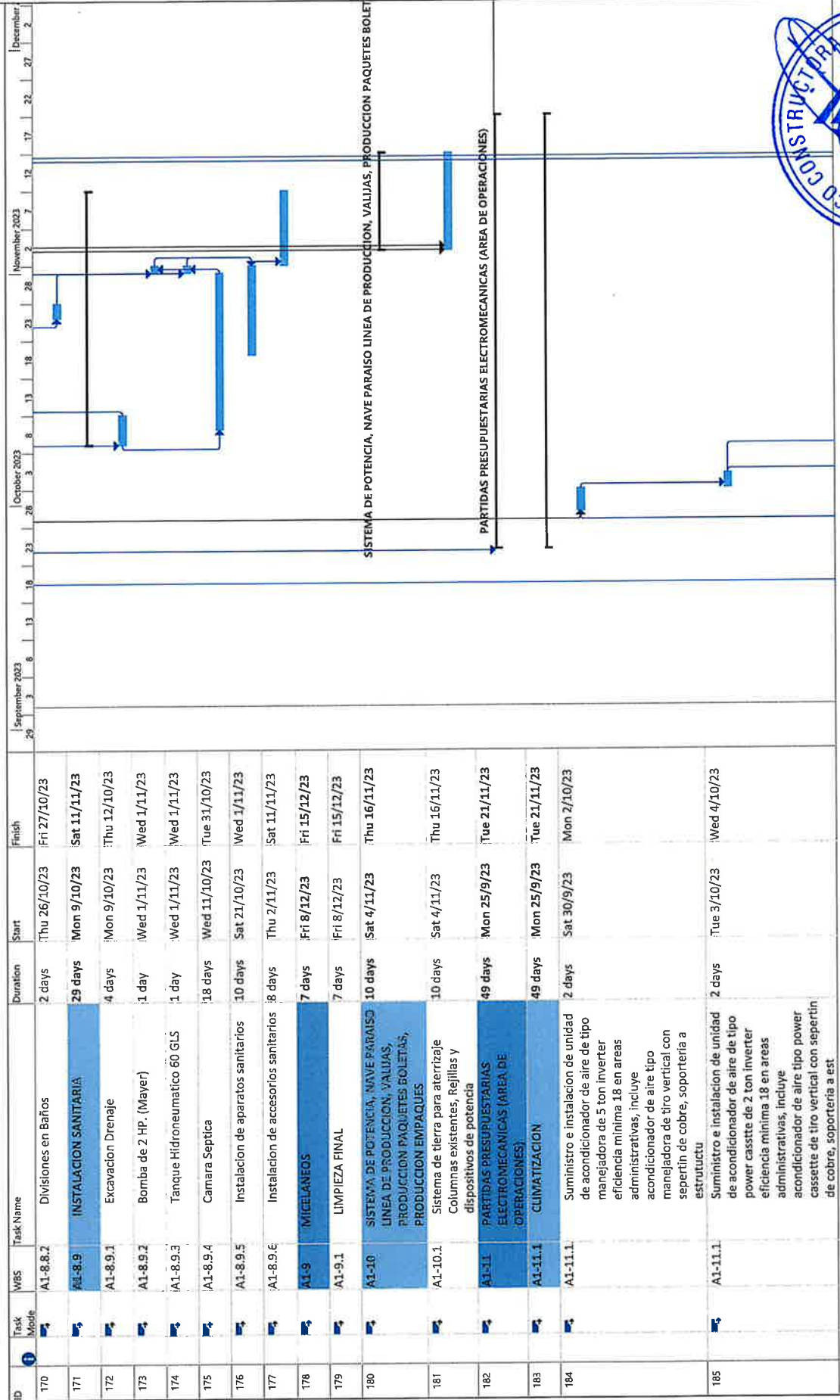
Start-only: [Start-only Icon] Finish-only: [Finish-only Icon] External Tasks: [External Tasks Icon] External Milestone: [External Milestone Icon]

Deadline: [Deadline Icon] Progress: [Progress Icon] Manual Progress: [Manual Progress Icon]

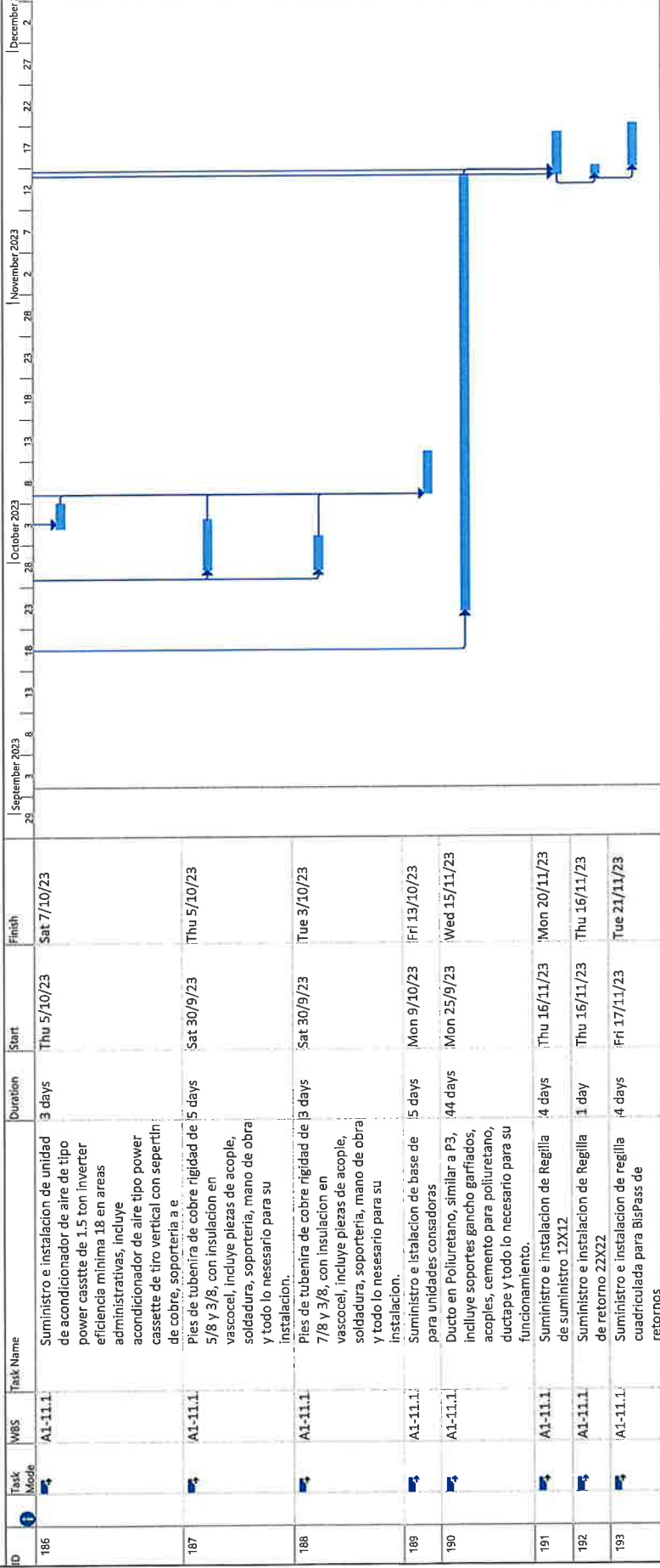


Legend for Gantt chart symbols:

- Task: Solid blue bar
- Split: Dashed blue bar
- Milestone: Diamond
- Summary: Thick blue bar
- Project Summary: Thick blue bar with arrow
- Inactive Task: Thin grey bar
- Inactive Milestone: Thin grey diamond
- Inactive Summary: Thin grey bar
- Manual Task: Bar with arrow
- Duration-only: Bar with arrow
- Manual Summary Rollup: Bar with arrow
- Manual Summary: Bar with arrow
- Start-only: Bar with arrow
- Finish-only: Bar with arrow
- External Tasks: Bar with arrow
- External Milestone: Diamond
- Deadline: Bar with arrow
- Progress: Bar with arrow
- Manual Progress: Bar with arrow



Task
 Split
 Milestone
 Summary
 Project Summary
 Inactive Task
 Inactive Milestone
 Inactive Summary
 Manual Task
 Duration-only
 Manual Summary Rollup
 Manual Summary
 Start-only
 Finish-only
 External Tasks
 External Milestone
 Deadline
 Progress
 Manual Progress



Task Split Milestone Summary

Project Summary Inactive Task Inactive Milestone

Manual Task Duration-only Manual Summary Rollup Manual Summary

Start-only Finish-only External Tasks External Milestone

Deadline Progress Manual Progress