



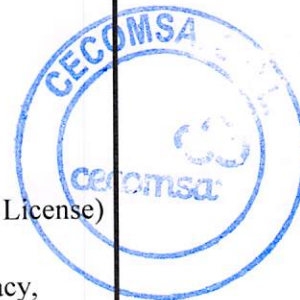
**JUNTA CENTRAL ELECTORAL**

**OFERTA TECNICA**

01 de Noviembre 2022

**NOMBRE DEL OFERENTE: CECOMSA SRL.**

Item No.	Descripción del Bien, Servicio u Obra	Unidad de medida	Cantidad
<b>ADQUISICION DE LAPTOPS</b>			
<b>1</b>	<b>LAPTOPS</b>	UD	30
	<p><b>Laptop Dell Latitude 5530</b>                      Procesador: 12th Generation Intel Essentials with Intel Core i5-1235U (10 Core, 12 MB Cache, 12 Threads, up to 4.40 GHz)                      Memoria Ram: 16GB, 1x16GB, DDR4 Non-ECC, expandible.                      Disco Duro: M.2 512GB PCIe NVMe Class 35 Solid State Drive                      Tarjeta de video: i5-1235U Trans, Intel Iris Xe Graphics, Thunderbolt                      Pantalla LCD: 15.6" FHD (1920x1080) Anti Glare, Touch, 250 nits, FHD IR Camera+Intelligent Privacy, WLAN                      Tarjeta Inalámbrica: Intel AX211 WiFi 6e 2x2 AX+ with Bluetooth 5.2                      Puertos:                      2x USB Type C Thunderbolt™ 4.0 with Power Delivery &amp; DisplayPort                      2x USB 3.2 Gen (1 with Power share)                      1x HDMI 2.0                      1x external uSIM card tray (optional) - eSim capable                      1x uSD 4.0 Memory card reader                      1x Contacted SmartCard Reader (optional)                      1x Touch Fingerprint Reader in Power Button                      1x Touch FIPS Fingerprint Reader in Palmrest (optional)                      Universal Audio Jack                      Wedge Shaped Lock slot                      RJ45</p> <p>Single Pointing, NFC, Smart Card Reader, Finger Print Reader, Thunderbolt 4                      Sistema Operativo: Windows 10 Pro (Includes Windows 11 Pro License)                      English, French, Spanish                      Camera FHD/IR Camera with ExpressSign-In + Intelligent Privacy, Temporal Noise Reduction, Camera Shutter, Mic                      65W Type-C Adapter                      41WHR, 3 Cell Battery Express Charge Capable  <b>Garantía: 3 Años, Onsite/In-Home Service After Remote Diagnosis</b></p> <p>Observaciones:                      1) Equipos nuevos (No remanufacturados).                      2) Marca reconocida en el mercado                      3) Cecomsa es Canal Autorizado para servicios tecnicos para cumplir con las reparaciones por garantia en caso de ser necesario.</p>		





# JUNTA CENTRAL ELECTORAL

## OFERTA TECNICA

01 de Noviembre 2022

NOMBRE DEL OFERENTE: **CECOMSA SRL.**

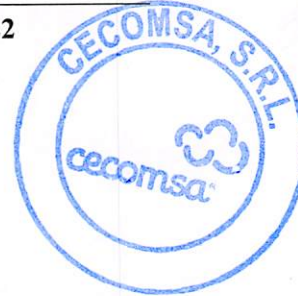
	4) Se presentan ficha técnicas de los equipos ofertados. 5) Los equipos ofertados tienen garantía local.		
--	---	--	--

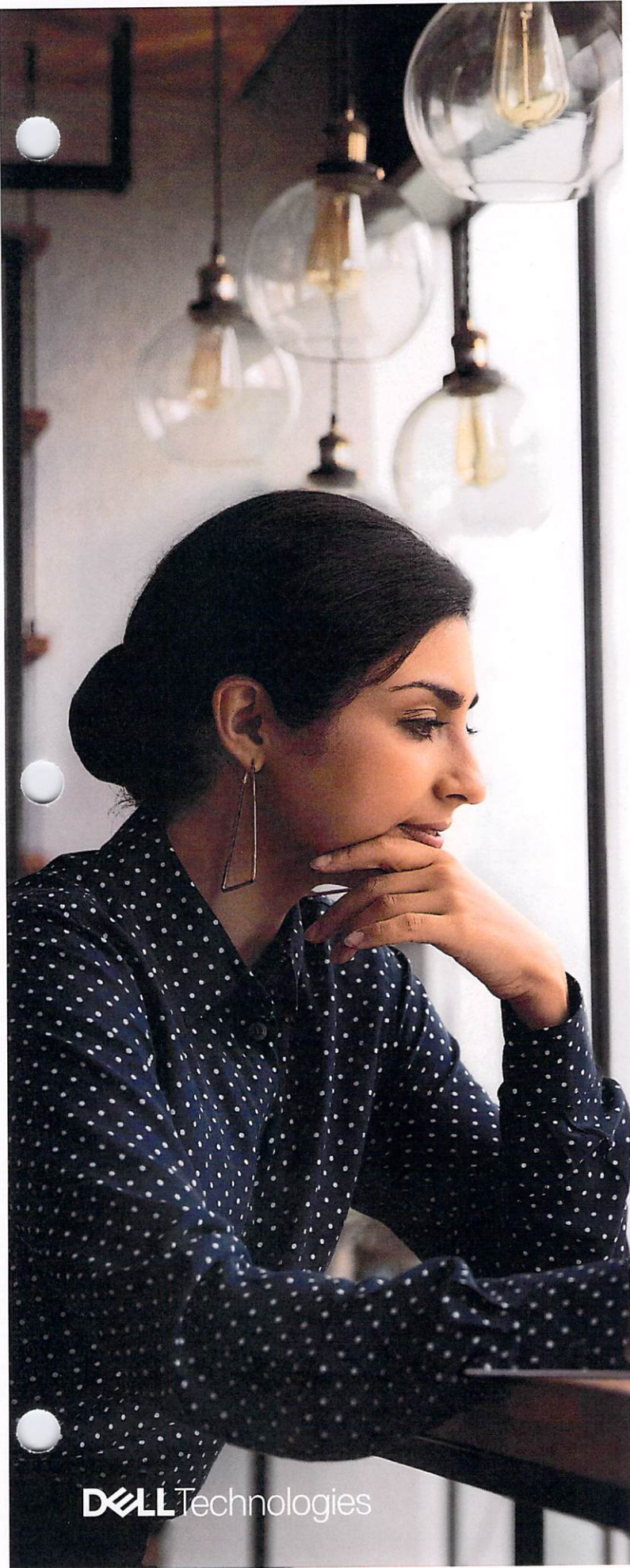
**Tiempo de Entrega:** 20-25 Días Habiles apartir de la recepción de Orden de compras.  
**Validez de la Oferta:** Ciento veinte días (120) días a partir de la fecha de presentación de la Oferta  
**Condicion de pago:** Un Pago de 20% del monto adjudicado, restante al recibir los bienes.

**Ricardo Adolfo Rodríguez en calidad de Gerente debidamente autorizado para actuar en nombre y representación de Cecomsa SRL.**

Firma \_\_\_\_\_

01 de Noviembre del 2022





LATITUDE

5330/5430/5530

Work anywhere on  
our most scalable and  
sustainable Latitude.



**DELL** Technologies



LATITUDE

# 5330/5430/5530

Work anywhere on our most scalable<sup>1</sup> and sustainable Latitude.

Designed with versatility for any business with intelligent performance, outstanding screen experience and built-in security and privacy options.

Ideal for Accountants, Call Center Reps, Finance, IT, etc. driven to produce results and strive for efficiency. They need the highest security and scalable performance offerings for desk productivity with the flexibility to work remotely.



**The world's smallest commercial mainstream PC<sup>2</sup>**  
Small and versatile with even more features you expect from our most scalable Latitude.

**New intelligent privacy features: Onlooker Detection** – alerts you of onlookers and protects data on screen. You can texturize screen or enable **SafeScreen** if available.

**Look-away Detect** – knows when you're not looking at screen & dims for privacy and battery savings.

**USB Type C & Thunderbolt 4**  
Dual USB Type C with Thunderbolt 4 ports are standard, HDMI 2.0, RJ45 (14"/15") and more.

**Run cooler & quieter**  
New larger fans across the series plus patented dual opposite outlet fans (14"/15") improve cooling.

Power for more of your work available **Intel vPro<sup>®</sup> with 12<sup>th</sup> Gen Intel<sup>®</sup> up to Core™ i7 P-series (28W)**. Offering up to 64GB DDR memory, storage up to 2TB, and both dual storage & discrete graphics options on 15".

**WiFi6E & 4G LTE options**  
Stay connected at your desk or on-the-go.

**ExpressSign-in**  
Wake your system when you approach and lock it when you step away.

**Intelligent Audio with neural noise cancellation**  
Collaborate confidently with AI-based background noise elimination.

**Displays for every user**  
Options including ComfortView Plus Low Blue Light; max your battery life with super low power panels; 4K UHD 400 nit on 15"; touch privacy on 14"; 2-in-1 with Gorilla Glass on 13" and more.

Utilize 2 or more networks at once with **ExpressConnect**, **world's 1st simultaneous multi-network connection** for faster data and video downloads<sup>19</sup>.

**Outstanding run-time plus charge faster with ExpressCharge**  
Multiple battery options up to 59 Whr and next generation SLP Panels.

**Our most sustainable Latitude Series**  
Latitude 5000 were the 1<sup>st</sup> PCs to use bio-based material - 21% in the lid, 39% in the bottom bumpers; Plus more sustainable parts inside - 28% ocean bound plastic fan housing case & 50% recycled plastic material in the battery frame.<sup>36</sup>

**Enterprise-level world's most secure, serviceability & durability** Passes MIL-STD 810H tests. 13" available as laptop or 2-in-1 with same BIOS and model number.

New 100% recycled or renewable packaging<sup>37</sup>. Easy to open, uses less carbon to ship.

See important information on last page

LATITUDE

# 5330/5430/5530

Sustainability on Dell Latitude

Leading the industry in sustainable practices in our products, packaging and supply chain.

**OUR MOST SUSTAINABLE LATITUDE PORTFOLIO:  
WORKING TOWARD OUR GOALS, SO YOU CAN MEET YOURS.**



### Packaging Innovation

## 100%

Recycled or renewable packaging across all new Latitude PCs. Easy-to-open and uses less carbon to ship. It's the 1<sup>st</sup> design that already meets our 2030 moonshot goals.<sup>37</sup>

### Design

## 1<sup>st</sup>

Latitude 5000 were the 1<sup>st</sup> PCs to use reclaimed carbon fiber and tree-based bioplastic<sup>22</sup>.

### Recycling e-waste



Securely, responsibly retire your IT equipment with Dell regardless of brand, in support of a circular economy. Learn more at [Dell.com/Recycle](https://Dell.com/Recycle).

### LATITUDE HAS

## 90+

EPEAT registered products<sup>21</sup>



## 100%

EPEAT Gold in 2022 products

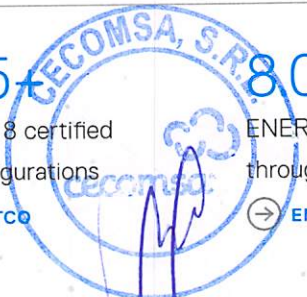


## 35+ TCO 8

certified configurations



ENERGY STAR® throughout the portfolio



See important information on last page

LATITUDE

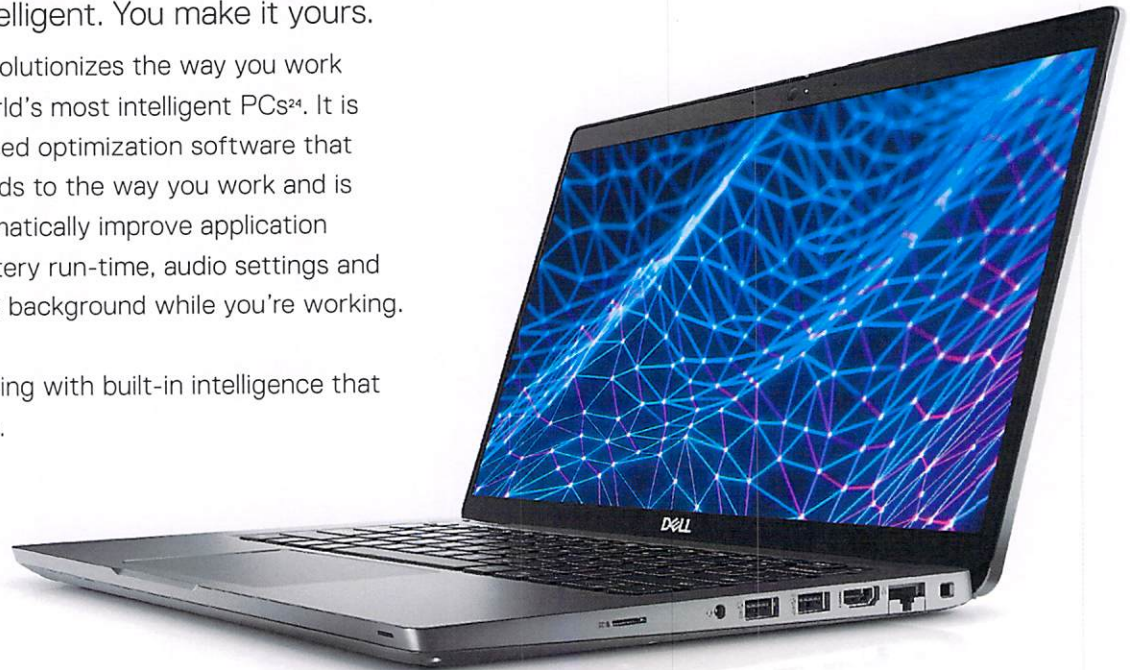
# 5330/5430/5530

## Dell Optimizer

We make it intelligent. You make it yours.

Dell Optimizer revolutionizes the way you work by fueling the world's most intelligent PCs<sup>24</sup>. It is a business, AI-based optimization software that learns and responds to the way you work and is designed to automatically improve application performance, battery run-time, audio settings and privacy - all in the background while you're working.

Accomplish anything with built-in intelligence that learns and adapts.



### Intelligent privacy anywhere

Onlooker detection lets you texturize your screen when an intruder is detected, and Look Away Detect darkens the PC screen based on user behavior.



### Extended power

ExpressCharge analyzes your power usage habits to improve PC battery utilization, extend run time, and charge your system faster.



### Unmatched connectivity

ExpressConnect<sup>28</sup> provides the world's first simultaneous multi-network connection<sup>29</sup> that joins the best network<sup>30</sup> available.



### Faster sign-in

ExpressSign-in's<sup>25</sup> proximity sensor detects your presence to wake on approach before Windows Hello logs you in via facial recognition.



### Enhanced audio

Intelligent Audio delivers audio and mic enhancements and reduces background noise using Neural noise cancellation.



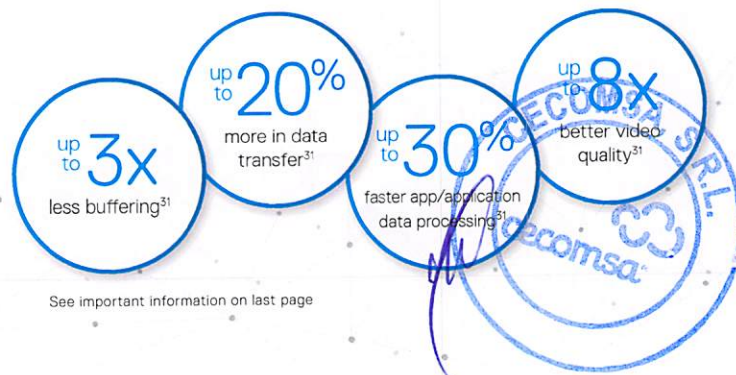
### Improved performance

ExpressResponse<sup>26</sup> analyzes how you use your preferred apps<sup>27</sup> to boost performance.



### Simplified manageability

Elevate work experience with an easy-to-manage application that provides a seamless experience for both end-users and IT decision-makers.



See important information on last page



## RECOMMENDED SOLUTIONS



**27 USB-C HUB Monitor  
- P2723DE**

Stay productive no matter where you work with this sleek 27" QHD hub monitor with ComfortView Plus.



**Dell Thunderbolt 4 Dock  
- WD22TB4**

Experience lightning fast charging and Thunderbolt 4 connectivity with this flexible and powerful modular dock.



**Dell Pro Wireless Keyboard and Mouse - KM5221W**

Enhance your everyday productivity with a quiet full-size keyboard and mouse combo that offers programmable shortcuts and 36 months battery life.<sup>38</sup>



**Dell USB-C Mobile Adapter - DA310**

Compact and portable 7-in-1 USB-C mobile adapter provides superb video, data connectivity and up to 90W power pass-through to your PC.



**Dell Pro Wireless Headset - WL5022**

Work from anywhere with this Bluetooth Teams certified headset that lets you switch seamlessly to your PC or smartphone and enjoy crystal clear audio on the go.



**Dell Speakerphone - SP3022**

Experience rich and clear audio with this intelligent Microsoft Teams certified speakerphone.



**Dell Active Pen - PN5122W**

Write naturally and precisely with this multi-protocol, high sensitivity active pen for our 2-in-1s.



**Dell EcoLoop Pro Backpack - CP5723**

An eco-conscious backpack for protection on-the-go.



**Dell Mobile Pro Wireless Mouse - MS5120W**

Connect your mouse conveniently via 2.4GHz wireless or Bluetooth and enhance your productivity with programmable shortcut buttons.



See important information on last page

# LATITUDE 5330/5430/5530

## TECHNICAL SPECIFICATION TECHNICAL SPECIFICATION TECHNICAL SPECIFICATION

### MODEL NUMBER Latitude 5330 (laptop or 2-in-1)

### PROCESSOR OPTIONS 12<sup>th</sup> Gen Intel® Core™ processors up to 17 U15 vPro®

11<sup>th</sup> Gen Intel® Core™ processors up to 15 U15 vPro®  
12<sup>th</sup> Gen Intel® Core™ processors up to 17 U15 vPro®

Microsoft® Windows 10 Pro 64-bit (11 License)  
Microsoft® Windows 10 Home 64-bit  
Microsoft® Windows 11 Pro 64-bit  
Microsoft® Windows 11 Home 64-bit  
Ubuntu® 20.04 LTS, 64-bit (laptop only)  
Ubuntu® 20.04 LTS, 64-bit  
Neokyllin

Up to 32GB DDR4 (on board) 3200MHz  
Up to 64GB DDR4 (socketed) 3200MHz

Integrated with the processor

Intel® Rapid Storage Technology  
Intel® Iris® Xe Graphics with Intel® Core™ i5/17

processors and dual-channel memory configuration or  
Intel UHD Graphics with Intel® Core™ i5 processor or  
Intel® Iris® Xe Graphics with Intel® Core™ i5/17

processors and dual-channel memory configuration or  
Intel UHD Graphics with Intel® Core™ i5 processor or  
Intel® Iris® Xe Graphics with Intel® Core™ i5/17

Optional NVIDIA® GeForce® MX450  
(2 GB DDR6 dedicated)

Intel® Iris® Xe Graphics with Intel® Core™ i5/17  
processors and dual-channel memory configuration or  
Intel UHD Graphics with Intel® Core™ i5 processor or  
Intel® Iris® Xe Graphics with Intel® Core™ i5/17

single channel memory

Intel UHD Graphics with Intel® Core™ i5 processor or  
Intel® Iris® Xe Graphics with Intel® Core™ i5/17

processors and dual-channel memory configuration or  
Intel UHD Graphics with Intel® Core™ i5 processor or  
Intel® Iris® Xe Graphics with Intel® Core™ i5/17

processors and dual-channel memory configuration or  
Intel UHD Graphics with Intel® Core™ i5 processor or  
Intel® Iris® Xe Graphics with Intel® Core™ i5/17

processors and dual-channel memory configuration or  
Intel UHD Graphics with Intel® Core™ i5 processor or  
Intel® Iris® Xe Graphics with Intel® Core™ i5/17

processors and dual-channel memory configuration or  
Intel UHD Graphics with Intel® Core™ i5 processor or  
Intel® Iris® Xe Graphics with Intel® Core™ i5/17

processors and dual-channel memory configuration or  
Intel UHD Graphics with Intel® Core™ i5 processor or  
Intel® Iris® Xe Graphics with Intel® Core™ i5/17

processors and dual-channel memory configuration or  
Intel UHD Graphics with Intel® Core™ i5 processor or  
Intel® Iris® Xe Graphics with Intel® Core™ i5/17

processors and dual-channel memory configuration or  
Intel UHD Graphics with Intel® Core™ i5 processor or  
Intel® Iris® Xe Graphics with Intel® Core™ i5/17

processors and dual-channel memory configuration or  
Intel UHD Graphics with Intel® Core™ i5 processor or  
Intel® Iris® Xe Graphics with Intel® Core™ i5/17

processors and dual-channel memory configuration or  
Intel UHD Graphics with Intel® Core™ i5 processor or  
Intel® Iris® Xe Graphics with Intel® Core™ i5/17

processors and dual-channel memory configuration or  
Intel UHD Graphics with Intel® Core™ i5 processor or  
Intel® Iris® Xe Graphics with Intel® Core™ i5/17

processors and dual-channel memory configuration or  
Intel UHD Graphics with Intel® Core™ i5 processor or  
Intel® Iris® Xe Graphics with Intel® Core™ i5/17

processors and dual-channel memory configuration or  
Intel UHD Graphics with Intel® Core™ i5 processor or  
Intel® Iris® Xe Graphics with Intel® Core™ i5/17

processors and dual-channel memory configuration or  
Intel UHD Graphics with Intel® Core™ i5 processor or  
Intel® Iris® Xe Graphics with Intel® Core™ i5/17

processors and dual-channel memory configuration or  
Intel UHD Graphics with Intel® Core™ i5 processor or  
Intel® Iris® Xe Graphics with Intel® Core™ i5/17

Optional Face IR camera (Windows Hello compliant)  
Optional Intelligent Privacy (onlooker detection with screen texturing and adaptive dimming)  
Camera Shutter  
Optional Face IR camera (Windows Hello compliant)  
Optional Intelligent Privacy (onlooker detection with screen texturing and adaptive dimming)  
Camera Shutter  
Optional Face IR camera (Windows Hello compliant)  
Optional Intelligent Privacy (onlooker detection with screen texturing and adaptive dimming)  
Camera Shutter

Optional Security Hardware Authentication Bundles  
1: Touch Fingerprint Reader (in Power Button) with Control Vault 3.0 Advanced Authentication with FIPS 140-2 Level 3 Certification  
2: Contactless Smart Card with Control Vault 3.0 Advanced Authentication with FIPS 140-2 Level 3 Certification  
3: Touch Fingerprint Reader (in Power Button) and Contactless Smart Card with Control Vault 3.0 Advanced Authentication with FIPS 140-2 Level 3 Certification  
4: Contactless Smart Card, Contactless Smart Card and Control Vault 3.0 Advanced Authentication with FIPS 140-2 Level 3 Certification  
5: Touch Fingerprint Reader (in Power Button), Contactless Smart Card, Contactless Smart Card NFC and Control Vault 3.0 Advanced Authentication with FIPS 140-2 Level 3 Certification  
6: FIPS Fingerprint Reader (on Palmrest) and Contactless Smart Card with Control Vault 3.0 Advanced Authentication with FIPS 140-2 Level 3 Certification

Optional Security Hardware Authentication Bundles  
1: Touch Fingerprint Reader (in Power Button) with Control Vault 3.0 Advanced Authentication with FIPS 140-2 Level 3 Certification  
2: Contactless Smart Card with Control Vault 3.0 Advanced Authentication with FIPS 140-2 Level 3 Certification  
3: Touch Fingerprint Reader (in Power Button) and Contactless Smart Card with Control Vault 3.0 Advanced Authentication with FIPS 140-2 Level 3 Certification  
4: Contactless Smart Card, Contactless Smart Card and Control Vault 3.0 Advanced Authentication with FIPS 140-2 Level 3 Certification  
5: Touch Fingerprint Reader (in Power Button), Contactless Smart Card, Contactless Smart Card NFC and Control Vault 3.0 Advanced Authentication with FIPS 140-2 Level 3 Certification  
6: FIPS Fingerprint Reader (on Palmrest) and Contactless Smart Card with Control Vault 3.0 Advanced Authentication with FIPS 140-2 Level 3 Certification

### STORAGE OPTIONS

up to 1 TB, M.2, PCIe, SSD, Class 35  
256 GB, M.2, PCIe NVMe, SED, Class 35  
up to 1 TB, M.2, PCIe NVMe, SED, Class 40  
2 TB, M.2, PCIe NVMe, SSD, Class 40  
up to 1 TB, M.2, PCIe NVMe, SED, Class 40  
256 GB, M.2, PCIe NVMe, SED, Class 35  
up to 1 TB, M.2, PCIe, SSD, Class 35  
Low Blue Light, sRGB 100%  
13.3" FHD (1920 x 1080) Anti Glare, 16x9, Non-touch, 400 nits, WVA, Super Low Power, ComfortView Plus  
13.3" FHD (1920 x 1080) Anti Glare, 16x9, Non-touch, Plus Low Blue Light, 400 nits, sRGB 100%  
13.3" FHD (1920 x 1080) Anti Glare, 16x9, Touch, Non-touch, WVA, Super Low Power, ComfortView Plus  
14" FHD (1920 x 1080) Anti Reflective/Anti Smudge, 300 nits, 100%, NTSC  
14" FHD (1920 x 1080) Anti Glare, 16x9, Touch, WVA, 300 nits, 100%, NTSC  
14" FHD (1920 x 1080) Anti Glare, 16x9, Non-touch, WVA, 250 nits, 45% NTSC  
14" FHD (1920 x 1080) Anti Glare, 16x9, Non-touch, TN, 220 nits, 45% NTSC  
14" HD (1366 x 768) Anti Glare, 16x9, Non-touch, Gorilla Glass 6 DXC, Active Pen Support, WVA, 72% NTSC  
13.3" FHD (1920 x 1080) Anti Glare, 16x9, 300 nits, 45% NTSC

### DISPLAY 2-in-1

processors and dual-channel memory configuration or  
Intel UHD Graphics with Intel® Core™ i5 processor or  
Intel® Iris® Xe Graphics with Intel® Core™ i5/17

### CHIPSET

### MEMORY OPTIONS

### INTEL RESPONSIVENESS TECHNOLOGIES

### GRAPHICS

### OPERATING SYSTEM

### OPERATING SYSTEM

### OPERATING SYSTEM

### OPERATING SYSTEM

See important information on last page

Dell Client Command Suite: On-Prem  
Dell Client Command Suite: Cloud  
Dell Optimizer  
Dell Power Manager  
Support Assist for PCs  
Support Assist for OS Recovery (Excalibur)  
Dell SafeBIOS - On Host Verification  
Support Assist OS Recovery (Excalibur)  
Dell SafeBIOS - Off Host Verification  
Dell SafeBIOS - Indicators of Attack  
Dell SafeBIOS - Indicators of Attack

Optional Face IR camera (Windows Hello compliant)  
Optional Intelligent Privacy (onlooker detection with screen texturing and adaptive dimming)  
Camera Shutter

Optional Security Hardware Authentication Bundles  
1: Touch Fingerprint Reader (in Power Button) with Control Vault 3.0 Advanced Authentication with FIPS 140-2 Level 3 Certification  
2: Contactless Smart Card with Control Vault 3.0 Advanced Authentication with FIPS 140-2 Level 3 Certification  
3: Touch Fingerprint Reader (in Power Button) and Contactless Smart Card with Control Vault 3.0 Advanced Authentication with FIPS 140-2 Level 3 Certification  
4: Contactless Smart Card, Contactless Smart Card and Control Vault 3.0 Advanced Authentication with FIPS 140-2 Level 3 Certification  
5: Touch Fingerprint Reader (in Power Button), Contactless Smart Card, Contactless Smart Card NFC and Control Vault 3.0 Advanced Authentication with FIPS 140-2 Level 3 Certification  
6: FIPS Fingerprint Reader (on Palmrest) and Contactless Smart Card with Control Vault 3.0 Advanced Authentication with FIPS 140-2 Level 3 Certification

### SECURITY

1PM 2.0 FIPS 140-2 Certified, TCG Certified  
Optional Windows Hello Compliant Fingerprint Reader in power button  
1PM 2.0 FIPS 140-2 Certified, TCG Certified  
up to 1 TB, M.2, PCIe NVMe, SED, Class 40  
2 TB, M.2, PCIe NVMe, SSD, Class 40  
up to 1 TB, M.2, PCIe NVMe, SED, Class 40  
256 GB, M.2, PCIe NVMe, SED, Class 35  
up to 1 TB, M.2, PCIe, SSD, Class 35  
Low Blue Light, sRGB 100%  
13.3" FHD (1920 x 1080) Anti Glare, 16x9, Non-touch, 400 nits, WVA, Super Low Power, ComfortView Plus  
13.3" FHD (1920 x 1080) Anti Glare, 16x9, Non-touch, Plus Low Blue Light, 400 nits, sRGB 100%  
13.3" FHD (1920 x 1080) Anti Glare, 16x9, Touch, Non-touch, WVA, Super Low Power, ComfortView Plus  
14" FHD (1920 x 1080) Anti Reflective/Anti Smudge, 300 nits, 100%, NTSC  
14" FHD (1920 x 1080) Anti Glare, 16x9, Touch, WVA, 300 nits, 100%, NTSC  
14" FHD (1920 x 1080) Anti Glare, 16x9, Non-touch, WVA, 250 nits, 45% NTSC  
14" FHD (1920 x 1080) Anti Glare, 16x9, Non-touch, TN, 220 nits, 45% NTSC  
14" HD (1366 x 768) Anti Glare, 16x9, Non-touch, Gorilla Glass 6 DXC, Active Pen Support, WVA, 72% NTSC  
13.3" FHD (1920 x 1080) Anti Glare, 16x9, 300 nits, 45% NTSC

### DISPLAY

processors and dual-channel memory configuration or  
Intel UHD Graphics with Intel® Core™ i5 processor or  
Intel® Iris® Xe Graphics with Intel® Core™ i5/17

### CHIPSET

### MEMORY OPTIONS

### INTEL RESPONSIVENESS TECHNOLOGIES

### GRAPHICS

### OPERATING SYSTEM

### OPERATING SYSTEM

### OPERATING SYSTEM

### OPERATING SYSTEM



# 5330/5430/5530

FEATURE	TECHNICAL SPECIFICATION	TECHNICAL SPECIFICATION	TECHNICAL SPECIFICATION
<b>MODEL NUMBER*</b>	Latitude 5330 (laptop or 2-in-1)	Latitude 5430 (laptop)	Latitude 5530 (laptop)
<b>SECURITY* (CONT)</b>	Dell SafelD Vmware Carbon Black Endpoint Standard Vmware Carbon Black Endpoint Advanced Vmware Carbon Black Endpoint Enterprise Absolute Visibility Absolute Control Absolute Resilience Dell Encryption Personal Dell Encryption Enterprise Netskope Cloud Access Security Broker (CASB) Netskope Secure Web Gateway Netskope Private Access	Dell SafelD Vmware Carbon Black Endpoint Standard Vmware Carbon Black Endpoint Advanced Vmware Carbon Black Endpoint Enterprise Absolute Visibility Absolute Control Absolute Resilience Dell Encryption Personal Dell Encryption Enterprise Netskope Cloud Access Security Broker (CASB) Netskope Secure Web Gateway Netskope Private Access	Dell SafelD Vmware Carbon Black Endpoint Standard Vmware Carbon Black Endpoint Advanced Vmware Carbon Black Endpoint Enterprise Absolute Visibility Absolute Control Absolute Resilience Dell Encryption Personal Dell Encryption Enterprise Netskope Cloud Access Security Broker (CASB) Netskope Secure Web Gateway Netskope Private Access
<b>DOCKING*</b>	<i>(Docks are optional, sold separately)</i> Dell Thunderbolt™ Dock - WD19TBS Dell Thunderbolt™ Dock - WD22TB4 Dell Performance Dock - WD19DCS Dell USB-C Dock - WD19S Dell Universal Dock D6000/ D6000S Dell Dual Charge Dock - HD22Q (May 2022)	<i>(Docks are optional, sold separately)</i> Dell Thunderbolt™ Dock - WD19TBS Dell Thunderbolt™ Dock - WD22TB4 Dell Performance Dock - WD19DCS Dell USB-C Dock - WD19S Dell Universal Dock D6000/ D6000S Dell Dual Charge Dock - HD22Q (May 2022)	<i>(Docks are optional, sold separately)</i> Dell Thunderbolt™ Dock - WD19TBS Dell Thunderbolt™ Dock - WD22TB4 Dell Performance Dock - WD19DCS Dell USB-C Dock - WD19S Dell Universal Dock D6000/ D6000S Dell Dual Charge Dock - HD22Q (May 2022)
<b>MULTIMEDIA*</b>	HD Camera, Temporal Noise Reduction, Camera Shutter FHD + IR Camera, Temporal Noise Reduction, Camera Shutter, ExpressSign-in™ FHD + IR Camera + Proximity Sensor, Temporal Noise Reduction, Camera Shutter, ExpressSign-in™, Intelligent Privacy, Ambient (laptop only) Light sensor 2 x High Quality Speakers 2 x Noise Canceling Microphones Waves MaxxAudio Pro Intelligent Audio with Neural Noise Cancellation Universal Audio jack No Camera / No Microphone Options Available	HD Camera, Temporal Noise Reduction, Camera Shutter FHD + IR Camera, Temporal Noise Reduction, Camera Shutter, ExpressSign-in™ FHD + IR Camera + Proximity Sensor, Temporal Noise Reduction, Camera Shutter, ExpressSign-in™, Intelligent Privacy, Ambient Light sensor 2 x High Quality Speakers 2 x Noise Canceling Microphones Waves MaxxAudio Pro Intelligent Audio with Neural Noise Cancellation Universal Audio jack No Camera / No Microphone Options Available	HD Camera, Temporal Noise Reduction, Camera Shutter FHD + IR Camera, Temporal Noise Reduction, Camera Shutter, ExpressSign-in™ FHD + IR Camera + Proximity Sensor, Temporal Noise Reduction, Camera Shutter, ExpressSign-in™, Intelligent Privacy, Ambient Light sensor 2 x High Quality Speakers 2 x Noise Canceling Microphones Waves MaxxAudio Pro Intelligent Audio with Neural Noise Cancellation Universal Audio jack No Camera / No Microphone Options Available
<b>BATTERY OPTIONS*<sup>16</sup></b>	3 cell 41 Whr Polymer , ExpressCharge 1.0™, ExpressCharge Boost™ & Long Life Cycle capable 4 cell 58 Whr Polymer , ExpressCharge 1.0™, ExpressCharge Boost™ & Long Life Cycle capable	3 cell 41 Whr Polymer , ExpressCharge 1.0™, ExpressCharge Boost™ & Long Life Cycle capable 4 cell 58 Whr Polymer , ExpressCharge 1.0™, ExpressCharge Boost™ & Long Life Cycle capable	3 cell 41 Whr Polymer , ExpressCharge 1.0™, ExpressCharge Boost™ & Long Life Cycle capable 4 cell 58 Whr Polymer , ExpressCharge 1.0™, ExpressCharge Boost™ & Long Life Cycle capable
<b>POWER OPTIONS*</b>	60W adapter, Type-C 65W adapter, Type-C 90W adapter, Type-C	60W adapter, Type-C 65W adapter, Type-C 90W adapter, Type-C	60W adapter, Type-C 65W adapter, Type-C 90W adapter, Type-C
<b>CONNECTIVITY OPTIONS*</b>	Microsoft Modern Standby Compliant <b>Wireless LAN Options*<sup>8</sup>:</b> Intel® Wi-Fi 6E (6GHz) AX211 2x2 + Bluetooth 5.2 Realtek RTL 8822CE 2x2 Wi-Fi 5, Bluetooth 5.0 MediaTek MT7921 Wi-Fi 6, Bluetooth 5.0 Intel® Wi-Fi 6 AX201 2x2 802.11ax 160MHz, Bluetooth 5.1 No wireless card installed option available <b>Mobile Broadband Options*<sup>9,10</sup>:</b> Intel® XMM™ 7360 LTE Advanced Cat 9 WWAN (DW5820e) (eSIM capable) Intel® XMM™ 7360 LTE Advanced Cat 9 WWAN (DW5820e) China, Turkey Intel® XMM™ 7360 LTE Advanced Cat 9 WWAN (DW5820e) T-Mobile, AT&T, Verizon, US only	Microsoft Modern Standby Compliant <b>Wireless LAN Options*<sup>8</sup>:</b> Intel® Wi-Fi 6E (6GHz) AX211 2x2 + Bluetooth 5.2 Realtek RTL 8822CE 2x2 Wi-Fi 5, Bluetooth 5.0 MediaTek MT7921 Wi-Fi 6, Bluetooth 5.0 Intel® Wi-Fi 6 AX201 2x2 802.11ax 160MHz, Bluetooth 5.1 No wireless card installed option available <b>Mobile Broadband Options*<sup>9,10</sup>:</b> Intel® XMM™ 7360 LTE Advanced Cat 9 WWAN (DW5820e) (eSIM capable) Intel® XMM™ 7360 LTE Advanced Cat 9 WWAN (DW5820e) China, Turkey Intel® XMM™ 7360 LTE Advanced Cat 9 WWAN (DW5820e) T-Mobile, AT&T, Verizon, US only	Microsoft Modern Standby Compliant <b>Wireless LAN Options*<sup>8</sup>:</b> Intel® Wi-Fi 6E (6GHz) AX211 2x2 + Bluetooth 5.2 Realtek RTL 8822CE 2x2 Wi-Fi 5, Bluetooth 5.0 MediaTek MT7921 Wi-Fi 6, Bluetooth 5.0 Intel® Wi-Fi 6 AX201 2x2 802.11ax 160MHz, Bluetooth 5.1 No wireless card installed option available <b>Mobile Broadband Options*<sup>9,10</sup>:</b> Intel® XMM™ 7360 LTE Advanced Cat 9 WWAN (DW5820e) (eSIM capable) Intel® XMM™ 7360 LTE Advanced Cat 9 WWAN (DW5820e) China, Turkey Intel® XMM™ 7360 LTE Advanced Cat 9 WWAN (DW5820e) T-Mobile, AT&T, Verizon, US only
<b>PORTS, SLOTS &amp; CHASSIS*</b>	2x USB Type C Thunderbolt™ 4.0 with Power Delivery & DisplayPort 2x USB 3.2 Gen (1 with Power share) 1x HDMI 2.0 1x external uSIM card tray (optional) - eSim capable 1x uSD 4.0 Memory card reader 1x Contacted SmartCard Reader (optional) 1x Touch Fingerprint Reader in Power Button (optional) Universal Audio Jack Wedge Shaped Lock slot	2x USB Type C Thunderbolt™ 4.0 with Power Delivery & DisplayPort 2x USB 3.2 Gen (1 with Power share) 1x HDMI 2.0 1x external uSIM card tray (optional) - eSim capable 1x uSD 4.0 Memory card reader 1x Contacted SmartCard Reader (optional) 1x Touch Fingerprint Reader in Power Button (optional) Universal Audio Jack Wedge Shaped Lock slot RJ45	2x USB Type C Thunderbolt™ 4.0 with Power Delivery & DisplayPort 2x USB 3.2 Gen (1 with Power share) 1x HDMI 2.0 1x external uSIM card tray (optional) - eSim capable 1x uSD 4.0 Memory card reader 1x Contacted SmartCard Reader (optional) 1x Touch Fingerprint Reader in Power Button (optional) 1x Touch FIPS Fingerprint Reader in Palmrest (optional) Universal Audio Jack Wedge Shaped Lock slot RJ45

See important information on last page



LATITUDE

# 5330/5430/5530

FEATURE	TECHNICAL SPECIFICATION	TECHNICAL SPECIFICATION	TECHNICAL SPECIFICATION
<b>MODEL NUMBER<sup>1</sup></b>	Latitude 5330 (laptop or 2-in-1)	Latitude 5430 (laptop)	Latitude 5530 (laptop)
<b>DIMENSIONS &amp; WEIGHT<sup>1,2,3</sup></b>	Width: 12.04" / 305.7 mm Height: 0.67" / 16.92 mm Depth: 8.17" / 207.5 mm Screen to Body: 79.4% Laptop Starting Weight: 2.65 lbs / 1.2 kg 2-in-1 Starting Weight: 2.9 lbs / 1.32 kg	Width: 12.65" / 321.35 mm Height: 0.76" / 19.3 mm Depth: 8.35" / 212 mm Screen to Body: 82.1% Starting Weight: 3.01 lbs / 1.36 kg	Width: 14.09" / 357.8 mm Height: 0.82" / 20.77 mm Depth: 9.19" / 233.3 mm Screen to Body: 83.1% Starting weight: 3.5 lbs / 1.59 kg
<b>REGULATORY AND ENVIRONMENTAL COMPLIANCE<sup>1</sup></b>	Regulatory Model Number: Laptop P138G ; 2-in-1 P139G Regulatory Type Number: Laptop P138G002 ; 2-in-1 P139G002 ENERGY STAR compliant configurations available EPEAT Gold Registered. For specific country participation and rating, please see <a href="http://www.epeat.net">www.epeat.net</a> TCO compliant configurations available Trade Agreements Acts (TAA) configurations available Halogen-Free / Arsenic-Free BFR / PVC free <sup>3</sup>	Regulatory Model Number: P137G Regulatory Type Number: P137G005 / P137G006 ENERGY STAR compliant configurations available EPEAT Gold Registered. For specific country participation and rating, please see <a href="http://www.epeat.net">www.epeat.net</a> TCO compliant configurations available Trade Agreements Acts (TAA) configurations available Halogen-Free / Arsenic-Free BFR / PVC free <sup>3</sup>	Regulatory Model Number: P104F Regulatory Type Number: P104F005 / P104F006 ENERGY STAR compliant configurations available EPEAT Gold Registered. For specific country participation and rating, please see <a href="http://www.epeat.net">www.epeat.net</a> TCO compliant configurations available Trade Agreements Acts (TAA) configurations available Halogen-Free / Arsenic-Free BFR / PVC free <sup>3</sup>
<b>INPUT<sup>1</sup></b>	Optional 10-Finger Touch Display Microsoft® Precision Clickpad Spill Resistant Non-Backlit Keyboard Spill Resistant Backlit Keyboard Dell Premier Rechargeable Active Pen - PN7522W (optional, sold separately, 2-in-1 only) Dell Active Pen - PN5122W (optional, sold separately, 2-in-1 only)	Optional 10-Finger Touch Display Microsoft® Precision Clickpad Spill Resistant Non-Backlit Keyboard Spill Resistant Backlit Keyboard	Optional 10-Finger Touch Display Microsoft® Precision Clickpad Spill Resistant Non-Backlit Keyboard Spill Resistant Backlit Keyboard
<b>SENSORS<sup>1</sup></b>	All: Hall Effect Sensor, Sensor Hub, Gyroscope + Accelerometer on Laptops with Proximity Camera and on all 2-in-1s; Adaptive Thermal Performance (when Gyroscope/Accelerometer present). Added with Proximity Camera: Ambient Light Sensor, Windows Auto Brightness, IR User Proximity Detection. Added with 2-in-1: Digital Compass (Magnetometer), Screen Rotation support, Proximity for SAR compliance (with WWAN module) Near Field Proximity Sensor.	All: Hall Effect Sensor, Sensor Hub. Added with Proximity Camera: Gyroscope + Accelerometer, Ambient Light Sensor, Windows Auto Brightness, IR User Proximity Detection. Adaptive Thermal Performance (when Gyroscope/Accelerometer present).	All: Hall Effect Sensor, Sensor Hub. Added with Proximity Camera: Gyroscope + Accelerometer, Ambient Light Sensor, Windows Auto Brightness, IR User Proximity Detection. Adaptive Thermal Performance (when Gyroscope/Accelerometer present).
<b>SYSTEMS MANAGEMENT<sup>1</sup></b>	Intel® vPro™ Technology (iAMT 12) (optional, requires Intel WiFi® Link WLAN and a vPro compatible processor), Dell Client Command Suite available ( <a href="http://dell.com/command">dell.com/command</a> ), Factory Installed Dell Client Command   Update, Dell Command   Power Manager   Dell Optimizer	Intel® vPro™ Technology (iAMT 12) (optional, requires Intel WiFi® Link WLAN and a vPro compatible processor), Dell Client Command Suite available ( <a href="http://dell.com/command">dell.com/command</a> ), Factory Installed Dell Client Command   Update, Dell Command   Power Manager   Dell Optimizer	Intel® vPro™ Technology (iAMT 12) (optional, requires Intel WiFi® Link WLAN and a vPro compatible processor), Dell Client Command Suite available ( <a href="http://dell.com/command">dell.com/command</a> ), Factory Installed Dell Client Command   Update, Dell Command   Power Manager   Dell Optimizer
<b>WARRANTY AND SERVICE<sup>1</sup></b>	Limited Hardware Warranty <sup>4</sup> , Standard 3 year Mail-in Service after Remote Diagnosis <sup>5</sup> , optional 3, 4 and 5 year hardware warranty extensions, and 3-5 year Dell ProSupport contracts available <sup>2</sup>	Limited Hardware Warranty <sup>4</sup> , Standard 3 year Mail-in Service after Remote Diagnosis <sup>5</sup> , optional 3, 4 and 5 year hardware warranty extensions, and 3-5 year Dell ProSupport contracts available <sup>2</sup>	Limited Hardware Warranty <sup>4</sup> , Standard 3 year Mail-in Service after Remote Diagnosis <sup>5</sup> , optional 3, 4 and 5 year hardware warranty extensions, and 3-5 year Dell ProSupport contracts available <sup>2</sup>
<b>PERIPHERAL ECOSYSTEM<sup>1</sup></b>	Wide range of accessories designed and tested for the Latitude 5320 enable productivity when working remote, on the go or in the office.	Wide range of accessories designed and tested for the Latitude 5320 enable productivity when working remote, on the go or in the office.	Wide range of accessories designed and tested for the Latitude 5320 enable productivity when working remote, on the go or in the office.
<b>SUSTAINABILITY</b>	Biobased material in rubber feet and lid Post-consumer recycled plastic in lid, battery frame, palmrest, fan housing, inner frame. Recycled Carbon Fiber in the lid and bottom cover Packaging made from 100% recycled or renewable materials (coming later CY22)	Biobased material in rubber feet and lid Post-consumer recycled plastic in lid, battery frame, palmrest, fan housing, inner frame. Recycled Carbon Fiber in the lid and bottom cover Packaging made from 100% recycled or renewable materials (coming later CY22)	Biobased material in rubber feet and lid Post-consumer recycled plastic in lid, battery frame, palmrest, fan housing, inner frame. Recycled Carbon Fiber in the lid and bottom cover Packaging made from 100% recycled or renewable materials (coming later CY22)



See important information on last page

## Product Disclosures:

- 1 Offering may vary by country and by configuration and operating system.
  - 2 A 64-bit operating system is required to support 4GB or more of system memory.
  - 3 GB means 1 billion bytes and TB equals 1 trillion bytes; actual capacity varies with preloaded material and operating environment and will be less.
  - 4 Limited Hardware Warranty: For copy of Limited Hardware Warranty, write Dell USA LP, Attn: Warranties, One Dell Way, Round Rock, TX 78682 or see [www.dell.com/warranty](http://www.dell.com/warranty).
  - 6 The stated Watt Hour (Whr) is not an indication of battery life.
  - 7 Intel Rapid Storage Technology requires a HDD, mSATA, or an SSD, as primary storage device and Windows OS required
  - 8 Wireless antenna available only at time of system purchase.
  - 9 Dell Latitude 5330/5430/5530 are brominated flame retardant free (BFR-free) and polyvinyl chloride free (PVC-free); meeting the definition of BFR-/PVC-free as set forth in the INEMI Position Statement on the "Definition of Low-Halogen Electronics (BFR-/CFR-/PVC-free)": Plastic parts contain less than 1,000 ppm (0.1%) of bromine (if the Br source is from BFRs) and less than 1,000 ppm (0.1%) of chlorine (if the Cl source is from CFRs or PVC or PVC copolymers). All printed circuit board (PCB) and substrate laminates contain bromine/chlorine total less than 1,500 ppm (0.15%) with a maximum chlorine of 900 ppm (0.09%) and maximum bromine being 900 ppm (0.09%).
  - 10 4G LTE antenna and 5G available only at time of system purchase. Mobile Broadband Subject to service provider's broadband subscription and coverage area; additional charges apply.
  - 11 Mail-in Service after Remote Diagnosis: Remote Diagnosis is determination by online/phone technician of cause of issue; may involve customer access to inside of system and multiple or extended sessions. If issue is covered by Limited Hardware Warranty ([www.dell.com/warranty](http://www.dell.com/warranty)) and not resolved remotely, technician and/or part will be dispatched, usually within 1 business day following completion of Remote Diagnosis. Availability varies. Other conditions apply.
  - 12 Dell Services: Availability and terms of Dell Services vary by region. For more information, visit [www.dell.com/servicesdescriptions](http://www.dell.com/servicesdescriptions).
  - 13 GB means 1 billion bytes and TB equals 1 trillion bytes; significant system memory may be used to support graphics, depending on system memory size and other factors.
  - 15 Weights vary depending on configuration and manufacturing variability; 0.990 kg configurability: up to i7 vPro (U15), FHD NT Ultralight LCD, WLAN, 41Whr battery, M.2 2230 class 35 SSD. No security, non-backlit KB.
  - 16 Based on Dell internal analysis, October 2021.
  - 17 Simultaneous multi-network connection (or Connection based teaming) is a new connectivity feature under ExpressConnect. It simultaneously sends and receives data and video traffic using two or more wired or wireless connections. Based on Dell internal analysis, September 2021.
  - 18 Based on Dell internal analysis, November 2021.
  - 19 Simultaneous multi-network connection (or Connection based teaming) is a new connectivity feature under ExpressConnect. It simultaneously sends and receives data and video traffic using two wired or wireless connections. Based on Dell internal analysis, September 2021. Simultaneous Data Transfer works with wired and wireless networks. For select Dell platforms, a USB Wi-Fi adapter is required to connect a second Wi-Fi network.
  - 20 Tree-based bioplastic in lid of Latitude 5000 Series and bio-based rubber in Latitude 5000 & 7000 Series.
  - 21 EPEAT registered where applicable. EPEAT registration varies by country. See [www.epeat.net](http://www.epeat.net) for registration status by country.
  - 22 Based on a Forrester Study commissioned by Dell Technologies and Intel: "The Total Economic Impact of Dell's PC as a Service", November 2020 <https://www.delltechnologies.com/asset/en-us/solutions/business-solutions/industry-market/forrester-the-total-economic-impact-of-dells-pc-as-a-service.pdf>
  - 23 Based on a Forrester Study commissioned by Dell Technologies and Intel: "The Total Economic Impact of Dell's PC as a Service", November 2020 <https://www.delltechnologies.com/asset/en-us/solutions/business-solutions/industry-market/forrester-the-total-economic-impact-of-dells-pc-as-a-service.pdf>
  - 24 Based on internal analysis, April 2021. Dell Optimizer available in 2020 devices, not available in OptiPlex 3000 series, Latitude 3310 2-in-1 and Latitude Chromebook Enterprise. Feature availability and functionality varies by model.
  - 25 Available on Latitude 9000 and select 7000 series; Precision mobile workstations 7000 and select 5000 series. See product details for availability.
  - 26 ExpressResponse must be enabled in the Applications feature. DO learns how user uses the selected application(s) over several hours. Based on Dell testing using Sysmark 2018 benchmark on a Latitude system running productivity applications; and using performance evaluation benchmarks on Precision mobile workstations running ISV applications, March 2020. Improvement will vary based on product configuration, use, application and other factors
  - 27 User must input preferred apps first in order for them to be analyzed.
  - 28 ExpressConnect available with Dell Optimizer software version 2.0 and onwards. Download the latest at <https://www.dell.com/support/home>.
  - 29 Disclaimer: Simultaneous multi-network connection (or Connection based teaming) is a new connectivity feature under ExpressConnect. It simultaneously sends and receives data and video traffic using two wired or wireless connections. Based on Dell internal analysis.
  - 30 Best network selection based on signal strength, channel congestion, router type and others. Network suggestions based on user credentials.
  - 31 With ExpressConnect's optimized internet bandwidth. Based on testing performed by Dell Labs in June 2020, comparing performance with ExpressConnect enabled and disabled. Actual results may vary; testing results do not guarantee performance under test conditions. Subject to service provider's broadband subscription and coverage area; speeds may vary. Additional charges will apply. Contact your service provider for details.
  - 32 Based on Dell Internal analysis, January 2019.
  - 33 Based on Principled Technologies Report commissioned by Dell Technologies, "Deliver pre-configured systems to end users faster with Dell Provisioning for VMware Workspace ONE", January 2019, comparing deployment using Dell Provisioning for Workspace ONE vs. traditional deployment. Results extrapolated to deployment of 1000 systems, a week represents seven full workdays. Actual results will vary.
  - 34 Based on a Forrester Total Economic Impact™ Study commissioned by VMware, "The Total Economic Impact™ of VMware Workspace ONE for Windows 10", September 2018. Results from interviews with VMware Workspace ONE customers and/or based on a 12,000-employee composite organization.
  - 35 Based on a Principled Technologies test report, "Spend Less Time and Effort Troubleshooting Laptop Hardware Failures" dated April 2018. Testing commissioned by Dell, conducted in the United States. Actual results will vary. Full report: <http://facts.pt/L52XKM>
  - 36 Based on Dell internal analysis, November 2021.
  - 37 Approximately 78% recycled content and 22% renewable content in the form of FSC paper fibers. Excludes optional items added to order and included in box.
  - 38 Based on Dell analysis of battery life usage model calculations, Nov. 2020. Results vary depending on use, operating conditions and other factors.
- \* Based on Dell internal analysis, November 2021.





Panamá, 10/26/2022 (MM/DD/YY)

Sres

JUNTA CENTRAL ELECTORAL DE LA REPÚBLICA DOMINICANA  
REPÚBLICA DOMINICANA

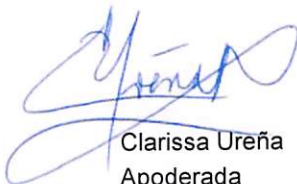
Asunto: JCE-CCC-CP-2022-0030 / Adquisición de Laptops

Por medio de la presente, Dell World Trade L.P. en su nombre y en nombre de las subsidiarias directas e indirectas de Dell Inc., fabricantes oficiales de los equipos de computación y periféricos marca Dell, con oficinas principales en One Dell Way, Round Rock Texas, Estados Unidos de América, declaramos:

CECOMSA S.R.L (el "Partner") es un "Distribuidor Autorizado no Exclusivo" de productos y servicios de nuestra marca, miembro del Dell Technologies Partner Program bajo la categoría de Solution Provider/Channel - Titanium en el territorio de REPÚBLICA DOMINICANA (el "Territorio"). Conforme a lo anterior el Partner posee nuestro apoyo en esta ocasión para ofertar nuestros productos y servicios (Dell Latitude 5530 XCTO Base) a(al) JUNTA CENTRAL ELECTORAL DE LA REPÚBLICA DOMINICANA, por su cuenta y riesgo.

Los Dell Latitude 5530 XCTO Base cuentan con los siguientes servicios: Hardware Service with Onsite/In-Home Service After Remote Diagnosis, 3 Years. La prestación de dichos servicios es proporcionada por nosotros o alguno de nuestros canales autorizados de servicios en el Territorio.

Atentamente,



Clarissa Ureña  
Apoderada

Letter Owner: Suira, Lineth





Santo Domingo, Distrito Nacional  
01 de noviembre del 2022

Señores:  
**Comité de Compras y Contrataciones**  
**Junta Central Electoral**  
Referencia: JCE-CCC-CP-2022-0030

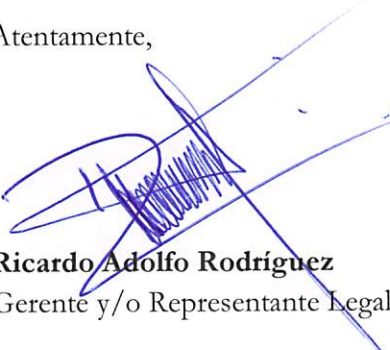
## Carta de Garantía

Distinguidos Señores

Quien suscribe, Ricardo Adolfo Rodríguez Hernández portador de cédula identidad: 031-0032395-9 en representación del **CECOMSA SRL**, certifico que la garantía de los bienes contenidos en nuestra propuesta son los siguientes.

LOTES	Garantía
Laptop Dell Latitude 5530	3 Años, Onsite/In-Home Service After Remote Diagnosis

Atentamente,



**Ricardo Adolfo Rodríguez**  
Gerente y/o Representante Legal



Carretera Luperón km 1  
T 809 581 5288

Plaza El Portal, 1er Nivel  
T 809 226 0848

Santiago  
República Dominicana

Rómulo Betancourt 331  
T 809 532 7026

Tiradentes 49  
T 809 535 0888

Santo Domingo  
República Dominicana





Santo Domingo, Distrito Nacional  
01 de noviembre del 2022

Señores:  
**Comité de Compras y Contrataciones**  
**Junta Central Electoral**  
Referencia: JCE-CCC-CP-2022-0030

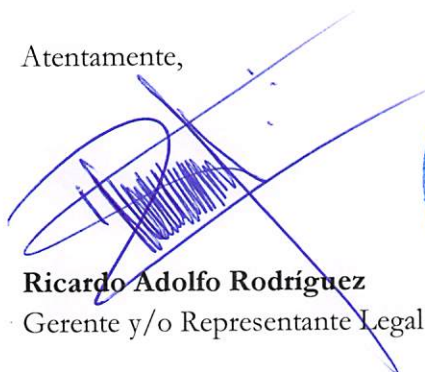
## Carta de Entrega

Distinguidos Señores

Quien suscribe, Ricardo Adolfo Rodríguez Hernández portador de cédula identidad: 031-0032395-9 en representación del **CECOMSA SRL**, certifico que la entrega de los bienes contenidos en nuestra propuesta son los siguientes.

LOTES	Entrega
Laptop Dell Latitude 5530	20-25 Días laborables a partir de la recepción de Orden de compras

Atentamente,



**Ricardo Adolfo Rodríguez**  
Gerente y/o Representante Legal



Carretera Luperón km 1  
T 809 581 5288

Plaza El Portal, 1er Nivel  
T 809 226 0848

Santiago  
República Dominicana

Rómulo Betancourt 331  
T 809 532 7026

Tiradentes 49  
T 809 535 0888

Santo Domingo  
República Dominicana

