



PBS Dominicana
Av. Winston Churchill #95, piso 22 Blue Mall
Santo Domingo, R. Dominicana
Tel + 809 567 8231
Fax + 809 472 0988
www.pbs.group

Oferta Técnica

De acuerdo a los artículos y equipos solicitados en la licitación JCE-CCC-CP-2023-0033 aquí les compartimos las especificaciones técnicas de los equipos ofertados.

SWITCHES FORTINET FS-124F-FULL POE

La marca ofertada para este caso es **FORTINET** modelo **FS-124F-FPOE** el cual es un switch de 24 puertos que cuenta con las siguientes características:

- 1- **Interfaz de redes:** 24x GE RJ45 and 4x 10GE SFP+
- 2- **Puerto consola RJ45:** 1
- 3- **Factor de forma:** 1RU Rack mount.
- 4- **Power over ethernet:** 24 (802.3af/at)
- 5- **Salida de POE total:** 370W.
- 6- **Tiempo medio entre fallos:** Mayor a 10 años.
- 7- **Switching Capacity:** 128 Gbps
- 8- **Paquetes por segundo:** 190 Mpps
- 9- **Almacenamiento direcciones MAC:** 32K
- 10- **Latencia de red:** < 1µs
- 11- **VLANs Soportadas:** 4K
- 12- **Tamaño del grupo de agregación de enlaces:** 8
- 13- **Grupos totales de agregación de enlaces:** 16
- 14- **Bufer de paquetes:** 2MB
- 15- **DRAM:** 512 MB DDR3
- 16- **FLASH:** 64MB
- 17- **ACL:** 768
- 18- **Spanning Tree Instances:** 16
- 19- **Requisitos de alimentación:** 100–240V AC, 50-60 Hz
- 20- **Consumo de energía:** 449.8 W / 451.3 W

FORTINET



Socios Regionales:



xerox

ORACLE Platinum Partner

FORTICARE SERVICES DESCRIPCION

FortiCare Elite 24X7 por tres años.

Los servicios FortiCare Elite ofrecen servicios mejorados acuerdos de nivel de servicio (SLA) y resolución acelerada de problemas. Este la oferta de soporte avanzado proporciona acceso a un equipo de soporte dedicado. Manejo de boletos con un solo toque por parte del equipo técnico experto agiliza resolución. Esta opción también proporciona Soporte de fin de ingeniería extendido (E-EoS) de 18 meses para agregar flexibilidad y acceso a los nuevos Portal FortiCare Elite. Este portal intuitivo proporciona una única vista unificada del dispositivo y seguridad sanitaria.

FortiCare Service Offerings

FortiCare Included Features	Per-device Service Options		
	FortiCare ESSENTIAL	FortiCare PREMIUM	FortiCare ELITE
RMA	Return and replace only	Advanced replacement (PRMA available)	Advanced replacement (PRMA available)
Web Support	✓	✓	✓
Telephone Support	—	✓	✓
Firmware Updates	✓	✓	✓
Asset Management Portal	✓	✓	✓
Response Time (Critical Issue)	Next business day	1 hour	15 mins
Response Time (Non-critical Issue)	Next business day	Next business day	2 business hours
Extended End-of-Engineering-Support (E-EoS) for Long Term Supported Firmware (LTS) of 18 months*	—	—	✓
Device Insights and Monitoring Portal (FortiCare Elite Portal)	—	—	✓

* Currently available for FortiGate only

Condiciones de Pago: credito a 30 dias despues de entregada la mercancia.

Tiempo de entrega: 60 a 75 dias.

Garantía: 3 años.

Plazo de mantenimiento de la oferta: 60 dias.



Socios Regionales:



xerox

ORACLE

**Platinum
Partner**

FortiCare Services

Technical Support, Advanced Support, and Professional Services



Hit the ground running with new capabilities

Fast-track return on investment with streamlined migration and deployment



Get expert help when you need it

Accelerate incident resolution and maximize efficacy with 24x7 assistance from technical experts



Enhance your security with tailored guidance

Increase productivity and avoid incidents with operational reviews, account planning, and upgrade assistance

Confidence in Your Investment

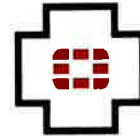
Businesses are making huge investments in security and Fortinet Security Fabric technologies to provide essential services critical to securing their most valuable assets. Organizations often lack the in-house expertise or resources for initial deployment, product support, and ongoing operations. At Fortinet, we understand these challenges and provide FortiCare Services to thousands of organizations every year to address them.

We want organizations to feel confident that they are maximizing the value of their investments quickly and realizing efficiency and efficacy gains over time. Whether migrating to a Fortinet Next-Generation Firewall (NGFW), implementing software-defined wide-area networking (SD-WAN) to protect your branch locations, or automating security operations functions, we will work with you to match the proper services with your unique business needs. We are dedicated to your success and provide the expertise you need when you need it.

Services

FortiCare Support Services is per-device support services, and it provides customers access to over 1,800 experts to ensure efficient and effective operations and maintenance of their Fortinet capabilities. Global technical support is offered 24x7 with flexible add-ons, including enhanced service level agreements (SLAs) and premium hardware replacement through 200+ in-country depots.

Advanced Support is account-based services, and provides high-touch account management and business guidance through designated resources to meet the needs of enterprises and service providers. Additionally, Enterprise Support Agreements (ESAs) are available to simplify consumption of the services.



Expertise at Your Service

- 24x7 Global Support
- 1,800+ NSE and Industry Certified Global Resources
- 3 Regional Centers of Expertise
- 23 Support Centers
- 40 Regional Depots
- 200+ In-country Depots
- 4-hour Expedited Hardware Replacement Availability

FortiCare Worldwide

24x7 Support

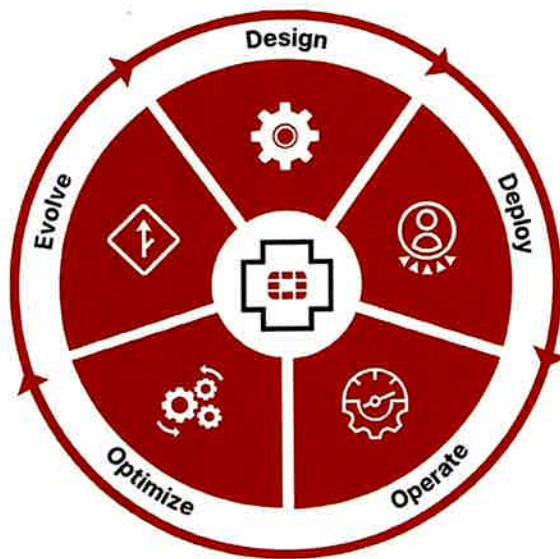
support.fortinet.com



Professional Services provides accelerated implementation and configuration optimization through QuickStart or custom engagements leveraging the services of highly skilled experts to promote first-time accuracy and avoid costly post-deployment issues.

The Journey

Adopting new technologies is not a project with a start and a finish. Instead, it is a journey from design and implementation to operations, optimization, and ongoing management of the solution. Fortinet has you covered every step of the way, freeing up your resources to focus on your business.



Feature Highlights: Technical Support

Organizations depend on Fortinet solutions to provide critical services. If any issues arise, they need to be addressed quickly to help ensure security and business continuity. Flexible support options help organizations maximize uptime, security, and performance according to the individual needs of each business.

Fortinet offers three different per-device support options to meet the needs of different devices, i.e., FortiCare Essential, FortiCare Premium, and FortiCare Elite. Organizations have the flexibility to buy different levels of service for different devices based on their needs.

FortiCare Essential

FortiCare Essential is the base-level service, and it is targeted toward devices that require a limited amount of support and can tolerate next-business-day, web-only response for critical as well as non-critical issues. This service is only offered to FortiGate models 8x and below and to low-end FortiWifi devices.

FortiCare Premium

FortiCare Premium is targeted toward devices that require 24x7x365 with one-hour response for critical issues and the next business-day response for non-critical issues.

FortiCare Elite

FortiCare Elite services offers enhanced service-level agreements (SLAs) and accelerated issue resolution. This advanced support offering provides access to a dedicated support team. Single-touch ticket handling by the expert technical team streamlines resolution. This option also provides Extended End-of-Engineering-Support (E-EoS) of 18 months for added flexibility and access to the new FortiCare Elite Portal. This intuitive portal provides a single unified view of device and security health.



PBS Dominicana



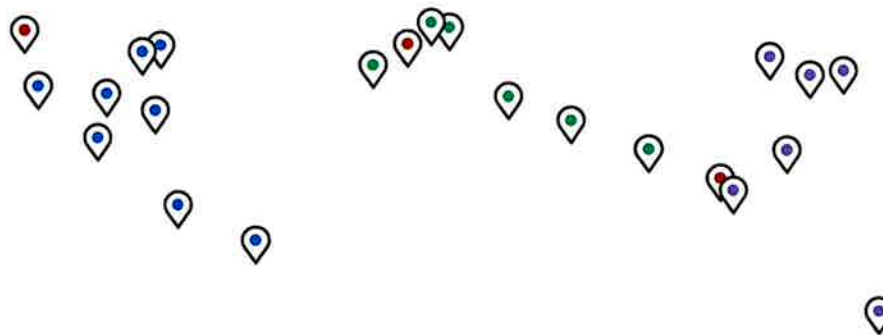
FortiCare Service Offerings

FortiCare Included Features	Per-device Service Options		
	FortiCare ESSENTIAL	FortiCare PREMIUM	FortiCare ELITE
RMA	Return and replace only	Advanced replacement (PRMA available)	Advanced replacement (PRMA available)
Web Support	✓	✓	✓
Telephone Support	—	✓	✓
Firmware Updates	✓	✓	✓
Asset Management Portal	✓	✓	✓
Response Time (Critical Issue)	Next business day	1 hour	15 mins
Response Time (Non-critical Issue)	Next business day	Next business day	2 business hours
Extended End-of-Engineering-Support (E-EoS) for Long Term Supported Firmware (LTS) of 18 months*	—	—	✓
Device Insights and Monitoring Portal (FortiCare Elite Portal)	—	—	✓

* Currently available for FortiGate only

FortiCare Services are provided by the support teams located across 20 regional Technical Assistance Centers (TACs) and three regional Centers of Excellence (COE).

Fortinet Technical Assistance Centers



- Regional COE:**
- Vancouver
 - Sophia Antipolis
 - Kuala Lumpur

- AMER Regional TAC:**
- Ottawa
 - Chicago
 - Sunnyvale
 - Plano
 - Sunrise
 - Mexico City
 - Bogota
 - Uberlandia

- EMEA Regional TAC:**
- Bangalore
 - Dubai
 - Frankfurt
 - Prague
 - Lisbon
 - Tel Aviv

- APAC Regional TAC:**
- Beijing
 - Sydney
 - Seoul
 - Tokyo
 - Manila
 - Singapore



Self-service Resources

For expedited answers, Fortinet maintains ample self-service resources to get you the answers you need, fast. All the answers to your questions are now in one place. The Fortinet community is a knowledge-sharing hub for customers, partners, Fortinet experts, and colleagues. The community is a place to collaborate, share insights and experiences, and get answers to questions.

community.fortinet.com

Feature Highlights: Advanced Support

For enhanced security and tailored guidance, FortiCare Advanced Support gives you direct assistance from technical experts who know your business and can help accelerate issue resolution. With designated account management and service delivery, you can focus on your business while we focus on your success.

Entitlements vary by level but can include:

Designated Advanced Technical Support	for focused resolution of incoming technical support issues.
Service Relationship Management	annual service and performance review. Quarterly operational review to cover technical ticket statistics, quality issues, overall ongoing ticket analysis, product life cycle, ongoing activity, and 90-day project planning.
Root Cause Analysis	of critical incidents (Priority-1 and Priority-2) related to Fortinet appliances.
Upgrade Assistance	which may include software recommendation, upgrade testing, and planning assistance.
Advanced Service Points	for remote after-hours assistance, product upgrade assistance, and software recommendations.
Annual Training Package	including NSE 4 and NSE 5 training and certification vouchers.



Fortinet Support offerings come in three levels to address customers' top-of-mind issues.

		CORE	PRO	PRO PLUS	GLOBAL	
					PRO	PRO PLUS
					3 Regions	3 Regions
Partnership	Technical Account Manager		1 Region	1 Region		
	Service Relationship Manager			1 Region		1 Head Quarters
Onboarding	Guided Onboarding and Getting Started Program	●	●	●	●	●
	Number of Employee NSE Lab & Exam	6	10	14	10	14
Education	Knowledge Transfer		Custom Webinar	Custom Webinar & Workshop	Custom Webinar	Custom Webinar & Workshop
	Success Plan			●		●
Discovery and Planning	Software Upgrade Assistance		1	2	2	4
	Hardening Check ¹		●	●	●	●
	Device Performance Healthcheck ¹			●		●
	Lifecycle Audit			●		●
	Periodic Ticket Review		●	●	●	●
Proactive Services	Quarterly & Annual Service Review		●	●	●	●
	Asset Management			●		●
	Technical Security Bulletin & Notification		●	●	●	●
	Critical Incident Management			●		●
Resolution and Troubleshooting	4-Hour Workaround SLA (P1) ²		●	●	●	●
	Designed Ticket Management	●	●	●	●	●
	Technical Escalation Management	●	●	●	●	●
	Root Cause Analysis (P1/P2)		●	●	●	●
	18-Month Software Troubleshooting		●	●	●	●
Flexible Consumption	Service Points ³	6	16	30	28	40

¹ Covers FortiGate only.

² This option is only available to FortiCare ELITE customers. Security breach/software fault is not covered.

³ Service Points can be used to consume various Fortinet Services.

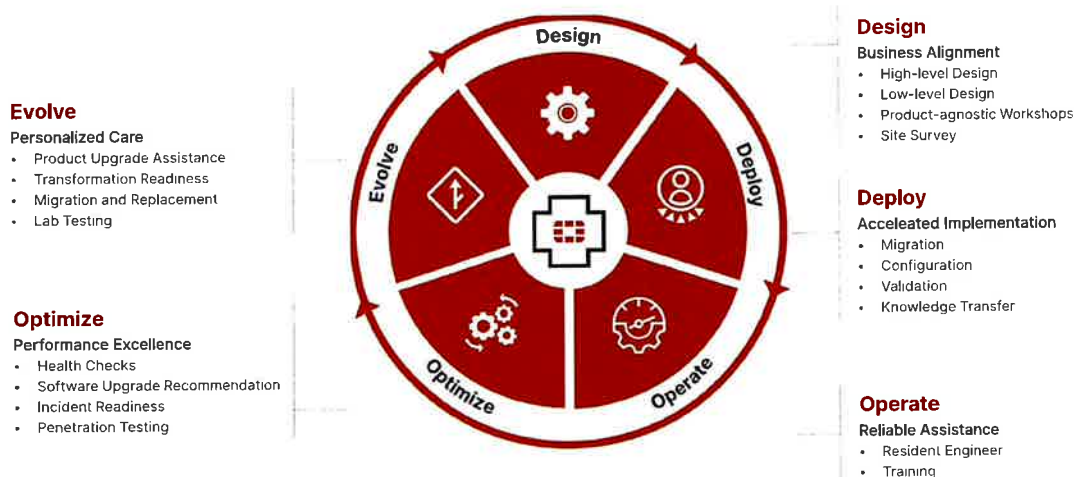


In addition, Global PRO and Global PRO Plus are available to extend the geographical coverage of the service. These services provide a designated Technical Account Manager per manager covering EMEA, Americas, and Asia Pacific.

Feature Highlights: Professional Services

As networks and threats rapidly evolve, it's critical to make sure security capabilities can keep up. Given the global cybersecurity skills shortage, today's organizations often lack the in-house expertise or enough staff to deploy, operate, and maintain the new technologies required to close security gaps. FortiCare Professional Services delivers expert help to ensure Fortinet deployments are optimized for each customer's unique needs.

Professional Services provides Design, Deploy, Operate, Optimize, and Evolve services. In addition, Professional Services also offers product-agnostic consulting services.



Key benefits to engaging Fortinet Professional Services:

Faster Time-to-Value	Hit the ground running with new capabilities, achieve faster time-to-value with streamlined expert deployment of Fortinet products and solutions.
Increased Service Uptime	Achieve increased uptime by leveraging subject matter experts who can proactively review changes, performance, and policies for reliability and sustained security.
Access to Industry Expertise	Supplement in-house teams with dedicated resources that can bring industry expertise to perform upgrades or handle technical incidents.
Increased Productivity	Increase staff productivity by offloading redundant operational tasks including configurations to Fortinet domain experts who know your business



Cybersecurity Advisory and Consulting Services allow our experts to partner with business leaders, helping organizations be at their best through this ever-changing environment. Fortinet experts discover existing security posture elements through a vendor-agnostic approach; align findings to business goals, strategic objectives, and compliance requirements; and guide existing projects and future planning toward framework maturity.



Discover

Business Goals
Security Posture
Systems/Objectives



Align

Security Framework
Compliance Requirements
Strategic Objectives



Guide

Architectural Design
Operational Practices
Maturity Roadmap

FortiGuard Labs Consulting

Consulting services are designed to help your organization address your specific threat landscapes and improve your organization's ability to use threat intelligence to meet that challenge. These services leverage the expertise and experience of the FortiGuard Labs team and provide the answers to the questions organizations are asking most:



Threats

What are the most important threats on which I should focus?



Environment

Is my environment as secure as it needs to be?



Operations

Are my people properly trained to defend us against the threats we face?

FORTINET

www.fortinet.com

Copyright © 2023 Fortinet, Inc. All rights reserved. Fortinet, FortiGate, FortiCare and FortiGuard are either registered trademarks or trademarks of Fortinet, Inc. in the United States and/or other countries. All other marks contained herein are trademarks of their respective owners. Performance and other metrics contained herein were obtained in internal lab tests under ideal conditions, and actual performance and other results may vary. Network variables, different network environments and other conditions may affect performance results. Reproduction, distribution, and transmission of this document is prohibited without the express written permission of Fortinet, Inc. Fortinet is not responsible for any damages or losses resulting from the use of this document. Fortinet warrants that the identified product will conform according to certain pre-defined performance metrics and, in such event, only the specific performance metrics in pre-defined performance metrics contained in the Fortinet contract shall be binding on Fortinet. For absolute clarity, this such warranty will be limited to performance in the same ideal conditions as in Fortinet's internal lab tests. Fortinet disclaims in full any covenants, representations, and warranties pursuant to this document. This document is for informational purposes only and is not intended to be used for any other purpose. The most current version of this publication shall be applicable.

AD-85-2023-00155
15-07-2023



FortiSwitch™ Secure Access



Highlights

- Designed for installations from desktops to wiring closets
- Ideal for SD-Branch deployments
- Centralized security and access management from FortiGate interfaces with FortiLink
- Optimal for converged network environments; enabling voice, data, and wireless traffic to be delivered across a single network
- Supports non-FortiLink deployments through onboard GUI, API, or command line configuration
- Up to 48 ports in a compact 1 RU form factor
- Stackable up to 300 switches per FortiGate, depending on model
- Supports wire-speed switching and store and forward forwarding mode

Security, Performance, and Manageability

The FortiSwitch™ Secure Access Family delivers outstanding security, performance, and manageability. Secure, simple, and scalable, FortiSwitch is the right choice for threat-conscious businesses of all sizes.

Tightly integrated into the Fortinet Security Fabric via FortiLink, FortiSwitch can be managed directly from the familiar FortiGate interface. This single-pane-of-glass management provides complete visibility and control of users and devices on the network regardless of how they connect. This makes the FortiSwitch ideal for SD-Branch and campus deployments with applications that range from desktop to data center aggregation, enabling businesses to converge their security and network access.



Available in



Appliance

Integration

Security Fabric Integration through FortiLink

FortiLink is an innovative proprietary management protocol that allows our FortiGate Next-Generation Firewall to seamlessly manage any FortiSwitch. FortiLink enables the FortiSwitch to become a logical extension of the FortiGate, integrating it directly into the Fortinet Security Fabric. This management option reduces complexity and decreases management costs as network security and access layer functions are enabled and managed through a single console. FortiLink integration enables centralized policy management, including role-based access and control, making it easy to implement and manage.

Collection

Entry 100 Series

- Entry level switch
- 8-48 GE ports, PoE+ capable
- Desktop to wiring closet
- 2-4 GE SFP uplink ports
- 4× 10GE SFP+ uplink ports

Mid-Range 200 Series

- Mid-level switch
- 24-48 GE ports, PoE+ capable
- Typical wiring closet switch
- 4 GE SFP uplink ports

Premium 400 Series

- Enterprise switch
- 24-48 GE and Multi-Gig port options, PoE+ and UPOE options
- Larger wiring closet or high throughput requirements
- 4× 10 GE SFP+ uplink ports

Aggregation 500 Series

- Aggregation switch
- 24-48 GE ports, PoE+ capable
- Larger wiring closet or high throughput requirements
- 4× 10 GE SFP+ and 2× 40 GE QSFP+ uplink ports





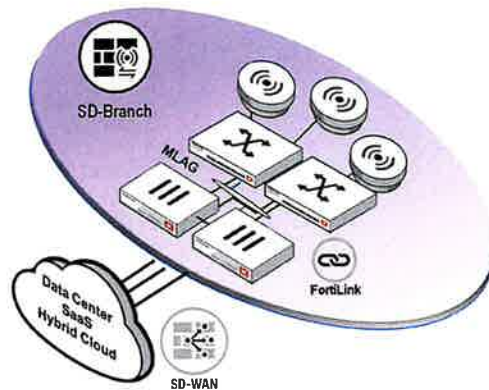
Deployment

Overview

FortiSwitch is commonly managed and deployed through our FortiGate with FortiLink but can also be deployed and managed in non-FortiGate environments. Cloud management for both deployment options shown below is available through FortiCloud.

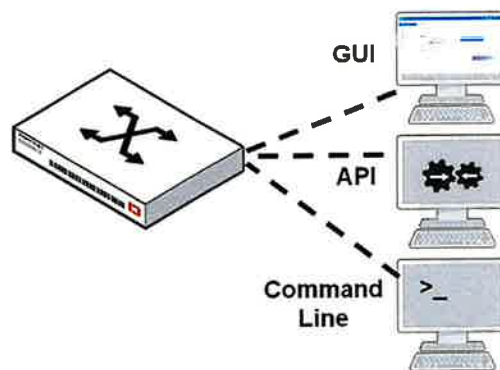
FortiGate

- Deployment and management via FortiLink
- Security extended from NGFW
- Most common Fortinet deployment model



Non-FortiGate

- Standalone GUI or CLI
- Manage at scale with FortiSwitch Manager
- Industry standard, no Fortinet Security Fabric integration



Product Offerings

Model Numbers

FS-108E-POE, FS-108E-FPOE, FS-108F, FS-108F-POE, FS-108F-FPOE, FS-124E, FS-124E-POE, FS-124E-FPOE, FS-148E, FS-148E-POE, FS-124F, FS-124F-POE, FS-124F-FPOE, FS-148F, FS-148F-POE, FS-148F-FPOE, FS-224D-FPOE, FS-224E, FS-224E-POE, FS-248D, FS-248E-POE, FS-248E-FPOE, FS-424E-FIBER, FS-M426E-FPOE, FS-424E, FS-424E-POE, FS-424E-FPOE, FS-448E, FS-448E-POE, FS-448E-FPOE, FS-524-D, FS-524D-FPOE, FS-548D, FS-548D-FPOE

Features

Refer to the FortiSwitch Feature Matrix for details about the features supported by each FortiSwitch model.

FORTISWITCH FORTILINK MODE (WITH FORTIGATE)

Management and Configuration

- Auto Discovery of Multiple Switches
- 8 to 300 Managed Switches depending on FortiGate model
- FortiLink Stacking (Auto Inter-Switch Links)
- Software Upgrade of Switches
- Centralized VLAN Configuration
- Switch POE Control
- Link Aggregation Configuration
- Spanning Tree
- LLDP/MED
- IGMP Snooping
- L3 Routing and Services (FortiGate)
- Policy-Based Routing (FortiGate)
- Virtual Domain (FortiGate)
- Automated detection and recommendations
- Dynamic Port Profiles for FortiSwitch ports
- Provision firmware upon authorization
- Health Monitoring

High Availability

- Support FortiLink FortiGate in HA Cluster
- LAG support for FortiLink Connection
- Active-Active Split LAG from FortiGate to FortiSwitches for Advanced Redundancy

FORTISWITCH FORTILINK MODE (WITH FORTIGATE)

Security and Visibility

- 802.1X Authentication (Port-based, MAC-based, MAB)
- Syslog Collection
- DHCP Snooping
- Device Detection
- MAC Black/White Listing (FortiGate)
- Policy Control of Users and Devices (FortiGate)
- Block Intra-VLAN Traffic
- Network Device Detection
- Host Quarantine on Switch Port
- Integrated FortiGate Network Access Control (NAC) function
- FortiGuard IoT identification
- FortiSwitch recommendations in Security Rating
- Switch Controller traffic collector
- Port Statistics
- Clients Monitoring

UTM Features

- Firewall (FortiGate)
- IPC, AV, Application Control, Botnet (FortiGate)



Features

Refer to the FortiSwitch Feature Matrix for details about the features supported by each FortiSwitch model.

FORTISWITCH	FORTISWITCH
<p>Layer 2</p> <ul style="list-style-type: none"> Jumbo Frames Auto-negotiation for Port Speed and Duplex MDI/MDIX Auto-crossover IEEE 802.1D MAC Bridging/STP IEEE 802.1w Rapid Spanning Tree Protocol (RSTP) IEEE 802.1s Multiple Spanning Tree Protocol (MSTP) STP Root Guard STP BPDU Guard Edge Port / Port Fast IEEE 802.1Q VLAN Tagging Private VLAN IEEE 802.3ad Link Aggregation with LACP Unicast/Multicast traffic balance over trunking port (dst-ip, dst-mac, src-dst-ip, src-dst-mac, src-ip, src-mac) IEEE 802.1AX Link Aggregation Spanning Tree Instances (MSTP/CST) IEEE 802.3x Flow Control and Back-pressure IEEE 802.3 10Base-T IEEE 802.3u 100Base-TX IEEE 802.3z 1000Base-SX/LX IEEE 802.3ab 1000Base-T IEEE 802.3ae 10 Gigabit Ethernet IEEE 802.3az Energy Efficient Ethernet IEEE 802.3bz Multi Gigabit Ethernet IEEE 802.3 CSMA/CD Access Method and Physical Layer Specifications Storm Control MAC, IP, Ethertype-based VLANs Virtual-Wire Split Port (QSFP+ breakout to 4x10G SFP+ or 4x1G SFP) Time-Domain Reflectometry (TDR) Support LAG min/max bundle Rapid PVST interoperability Ingress Pause Metering Loop Guard Per-port storm control Priority-based Flow Control (802.1Qbb) IEEE 802.1ad QinQ VLAN Mapping IEEE 802.3ba, 802.3bj, and 802.3bm 40 and 100 Gigabit Ethernet Auto topology Dynamically shared packet buffers <p>Services</p> <ul style="list-style-type: none"> IGMP proxy / querier MLD Snooping MLD proxy / querier IGMP Snooping 	<p>Layer 3</p> <ul style="list-style-type: none"> Static Routing (Hardware-based) Dynamic Routing Protocols: OSPFv2, RIPv2, VRRP, BGP, ISIS * Multicast Protocols: PIM-SSM * ECMP Bidirectional Forwarding Detection (BFD) DHCP Relay IP conflict detection and notification DHCP server Unicast Reverse Path Forwarding - uRPF IPv6 route filtering Filtering routemaps based on routing protocol <p>Security and Visibility</p> <ul style="list-style-type: none"> Port Mirroring Admin Authentication Via RFC 2865 RADIUS IEEE 802.1X Authentication Port-based IEEE 802.1X Authentication MAC-based IEEE 802.1X Guest and Fallback VLAN IEEE 802.1X MAC Access Bypass (MAB) IEEE 802.1X Dynamic VLAN Assignment Radius CoA (Change of Authority) Radius Accounting MAC-IP Binding sFlow ACL IEEE 802.1ab Link Layer Discovery Protocol (LLDP) IEEE 802.1ab LLDP-MED IEEE 802.1ae MAC Security (MAC Sec) DHCP-Snooping Dynamic ARP Inspection Sticky MAC and MAC Limit IEEE 802.1X open auth IEEE 802.1X EAP pass-through Flow Export (NetFlow and IPFIX) ACL Multistage ACL Multiple Ingress ACL Schedule IP source guard IPv6 RA Guard LLDP-MED ELIN support Per-port and per-VLAN MAC learning limit Assign VLANs via Radius attributes (RFC 4675) Wake on LAN <p>*Requires 'Advanced Features' License.</p>



Features

Refer to the FortiSwitch Feature Matrix for details about the features supported by each FortiSwitch model.

FORTISWITCH	FORTISWITCH
High Availability Multi-Chassis Link Aggregation (MCLAG)	Management IPv4 and IPv6 Management Telnet / SSH HTTP / HTTPS SNMP v1/v2c/v3 SNTP Standard CLI and Web GUI Interface Software download/upload, TFTP/FTP/GUI Managed from FortiGate Support for HTTP REST APIs for Configuration and Monitoring Dual Firmware Support RMON Group 1 Packet Capture SPAN, RSPAN, and ERSPAN Link Monitor POE Control Modes System Temperature and Alert Syslog UDP/TCP Provide warning if L2 table is getting full Display Average Bandwidth and Allow Sorting on Physical Port / Interface Traffic System alias command SNMP v3 traps Automation Stitches
Quality of Service IEEE 802.1p Based Priority Queuing IP TOS/DSCP Based Priority Queuing IEEE 1588 PTP (Transparent Clock) Explicit Congestion Notification Egress priority tagging Percentage Rate Control	



Features

ALL FORTISWITCH MODELS

RFC and MIB Support*

BFD

- RFC 5880: Bidirectional Forwarding Detection (BFD)
- RFC 5881: Bidirectional Forwarding Detection (BFD) for IPv4 and IPv6 (Single Hop)
- RFC 5882: Generic Application of Bidirectional Forwarding Detection (BFD)

BGP

- RFC 1771: A Border Gateway Protocol 4 (BGP-4)
- RFC 1965: Autonomous System Confederations for BGP
- RFC 1997: BGP Communities Attribute
- RFC 2545: Use of BGP-4 Multiprotocol Extensions for IPv6 Inter-Domain Routing
- RFC 2796: BGP Route Reflection - An Alternative to Full Mesh IBGP
- RFC 2842: Capabilities Advertisement with BGP-4
- RFC 2858: Multiprotocol Extensions for BGP-4
- RFC 4271: BGP-4
- RFC 6286: Autonomous-System-Wide Unique BGP Identifier for BGP-4
- RFC 6608: Subcodes for BGP Finite State Machine Error
- RFC 6793: BGP Support for Four-Octet Autonomous System (AS) Number Space
- RFC 7606: Revised Error Handling for BGP UPDATE Messages
- RFC 7607: Codification of AS 0 Processing
- RFC 7705: Autonomous System Migration Mechanisms and Their Effects on the BGP AS_PATH Attribute
- RFC 8212: Default External BGP (EBGP) Route Propagation Behavior without Policies
- RFC 8654: Extended Message Support for BGP

DHCP

- RFC 2131: Dynamic Host Configuration Protocol
- RFC 3046: DHCP Relay Agent Information Option
- RFC 7513: Source Address Validation Improvement (SAVI) Solution for DHCP

IP/IPv4

- RFC 2697: A Single Rate Three Color Marker
- RFC 3168: The Addition of Explicit Congestion Notification (ECN) to IP
- RFC 5227: IPv4 Address Conflict Detection
- RFC 5517: Cisco Systems' Private VLANs: Scalable Security in a Multi-Client Environment
- RFC 7039: Source Address Validation Improvement (SAVI) Framework

IP Multicast

- RFC 2362: Protocol Independent Multicast-Sparse Mode (PIM-SM): Protocol Specification
- RFC 2710: Multicast Listener Discovery (MLD) for IPv6 (MLDv1)
- RFC 4541: Considerations for Internet Group Management Protocol (IGMP) and Multicast Listener Discovery (MLD) Snooping Switches
- RFC 4605: Internet Group Management Protocol (IGMP)/Multicast Listener Discovery (MLD)-Based Multicast Forwarding ("IGMP/MLD Proxying")
- RFC 4607: Source-Specific Multicast for IP

ALL FORTISWITCH MODELS

RFC and MIB Support*

IPv6

- RFC 2464: Transmission of IPv6 Packets over Ethernet Networks: Transmission of IPv6 Packets over Ethernet Networks
- RFC 2474: Definition of the Differentiated Services Field (DS Field) in the and IPv6 Headers (DSCP)
- RFC 2893: Transition Mechanisms for IPv6 Hosts and Routers
- RFC 4213: Basic Transition Mechanisms for IPv6 Hosts and Router
- RFC 4291: IP Version 6 Addressing Architecture
- RFC 4443: Internet Control Message Protocol (ICMPv6) for the Internet Protocol Version 6 (IPv6) Specification
- RFC 4861: Neighbor Discovery for IP version 6 (IPv6)
- RFC 4862: IPv6 Stateless Address Auto configuration
- RFC 5095: Deprecation of Type 0 Routing Headers in IPv6
- RFC 6724: Default Address Selection for Internet Protocol version 6 (IPv6)
- RFC 7113: IPv6 RA Guard
- RFC 8200: Internet Protocol, Version 6 (IPv6) Specification
- RFC 8201: Path MTU Discovery for IP version 6

IS-IS

- RFC 1195: Use of OSI IS-IS for Routing in TCP/IP and Dual Environments
- RFC 5308: Routing IPv6 with IS-IS

MIB

- RFC 1213: MIB II parts that apply to FortiSwitch 100 units
- RFC 1354: IP Forwarding Table MIB
- RFC 1493: Bridge MIB
- RFC 1573: SNMP MIB II
- RFC 1643: Ethernet-like Interface MIB
- RFC 1724: RIPv2-MIB
- RFC 1850: OSPF Version 2 Management Information Base
- RFC 2233: The Interfaces Group MIB using SMIv2
- RFC 2618: Radius-Auth-Client-MIB
- RFC 2620: Radius-Acc-Client-MIB
- RFC 2665: Definitions of Managed Objects for the Ethernet-like Interface Types
- RFC 2674: Definitions of Managed Objects for Bridges with Traffic Classes, Multicast Filtering and Virtual LAN extensions
- RFC 2787: Definitions of Managed Objects for the Virtual Router Redundancy Protocol
- RFC 2819: Remote Network Monitoring Management Information Base
- RFC 2863: The Interfaces Group MIB
- RFC 2932: IPv4 Multicast Routing MIB
- RFC 2934: Protocol Independent Multicast MIB for IPv4
- RFC 3289: Management Information Base for the Differentiated Services Architecture
- RFC 3433: Entity Sensor Management Information Base
- RFC 3621: Power Ethernet MIB
- RFC 6933: Entity MIB (Version 4)

* RFC and MIB supported by FortiSwitch Operating System. Check FortiSwitch Feature Matrix for model specific support.



Features

ALL FORTISWITCH MODELS

RFC and MIB Support*

OSPF

RFC 1583: OSPF version 2
 RFC 1765: OSPF Database Overflow
 RFC 2328: OSPF version 2
 RFC 2370: The OSPF Opaque LSA Option
 RFC 2740: OSPF for IPv6
 RFC 3101: The OSPF Not-So-Stubby Area (NSSA) Option
 RFC 3137: OSPF Stub Router Advertisement
 RFC 3623: OSPF Graceful Restart
 RFC 5340: OSPF for IPv6 (OSPFv3)
 RFC 5709: OSPFv2 HMAC-SHA Cryptographic Authentication
 RFC 6549: OSPFv2 Multi-Instance Extensions
 RFC 6845: OSPF Hybrid Broadcast and Point-to-Multipoint Interface Type
 RFC 6860: Hiding Transit-Only Networks in OSPF
 RFC 7474: Security Extension for OSPFv2 When Using Manual Key Management
 RFC 7503: OSPF for IPv6
 RFC 8042: CCITT Draft Recommendation T.4
 RFC 8362: OSPFv3 Link State Advertisement (LSA) Extensibility

OTHER

RFC 2030: SNMP
 RFC 3176: InMon Corporation's sFlow: A Method for Monitoring Traffic in Switched and Routed Networks
 RFC 3768: VRRP
 RFC 3954: Cisco Systems NetFlow Services Export Version 9
 RFC 5101: Specification of the IP Flow Information Export (IPFIX) Protocol for the Exchange of Flow Information
 RFC 5798: VRRPv3 (IPv4 and IPv6)

ALL FORTISWITCH MODELS

RFC and MIB Support*

RADIUS

RFC 2865: Admin Authentication Using RADIUS
 RFC 2866: RADIUS Accounting
 RFC 4675: RADIUS Attributes for Virtual LAN and Priority Support
 RFC 5176: Dynamic Authorization Extensions to Remote Authentication Dial In User Service (RADIUS)

RIP

RFC 1058: Routing Information Protocol
 RFC 2080: RIPng for IPv6
 RFC 2082: RIP-2 MD5 Authentication
 RFC 2453: RIPv2
 RFC 4822: RIPv2 Cryptographic Authentication

SNMP

RFC 1157: SNMPv1/v2c
 RFC 2571: Architecture for Describing SNMP
 RFC 2572: SNMP Message Processing and Dispatching
 RFC 2573: SNMP Applications
 RFC 2576: Coexistence between SNMP versions



* RFC and MIB supported by FortiSwitch Operating System. Check FortiSwitch Feature Matrix for model specific support.



Specifications

	FORTISWITCH 108E-POE	FORTISWITCH 108E-FPOE
Hardware Specifications		
Total Network Interfaces	8x GE RJ45 and 2x GF SFP	8x GE RJ45 and 2x GE SFP
Dedicated Management 10/100 Port	0	0
RJ-45 Serial Console Port	1	1
Form Factor	1 RU Rack Mount	1 RU Rack Mount
Power over Ethernet (PoE) Ports	4 (802.3af/at)	8 (802.3af/at)
PoE Power Budget	65 W	130 W
Mean Time Between Failures	> 10 years	> 10 years
System Specifications		
Switching Capacity (Duplex)	20 Gbps	20 Gbps
Packets Per Second (Duplex)	30 Mpps	30 Mpps
MAC Address Storage	8 K	8 K
Network Latency	4µs	4µs
VLANs Supported	4 K	4 K
Link Aggregation Group Size	8	8
Total Link Aggregation Groups	8	8
Packet Buffers	512 KB	512 KB
DRAM	256 MB DDR3	256 MB DDR3
FLASH	32 MB	32 MB
ACL	640	640
Spanning Tree Instances	16	16
Dimensions		
Height x Depth x Width (inches)	1.7 × 8.2 × 13	1.7 × 8.2 × 13
Height x Depth x Width (mm)	44 × 209 × 330	44 × 209 × 330
Weight	4.3 lbs (1.95 kg)	4.5 lbs (2.04 kg)
Environment		
Power Required	100–240V AC, 50/60 Hz	100–240V AC, 50/60 Hz
Power Supply	AC Built in	AC Built in
Redundant Power		
Power Consumption* (Average / Maximum)	70.19 W / 71.10 W	135.19 W / 136.10 W
Heat Dissipation	17.7 BTU/h	17.7 BTU/h
Operating Temperature	32°–113°F (0°–45°C)	32°–113°F (0°–45°C)
Storage Temperature	–40°–158°F (–40°–70°C)	–40°–158°F (–40°–70°C)
Humidity	10%–90% non-condensing	10%–90% non-condensing
Air-Flow Direction	side-to-back	side-to-back
Noise Level	Fanless	Fanless
Certification and Compliance		
	FCC, CE, RCM, VCCI, BSMI, UL, CB, RoHS2	
Warranty		
Fortinet Warranty	Limited lifetime** warranty on all models	

* POE models power consumption is similar to non-POE model if POE is not in use

** Fortinet Warranty Policy: <http://www.fortinet.com/doc/legal/EULA.pdf>



FortiSwitch 108E-POE

FortiSwitch 108E-FPOE



Specifications

	FORTISWITCH 108F	FORTISWITCH 108F-POE	FORTISWITCH 108F-FPOE
Hardware Specifications			
Total Network Interfaces	7x GE RJ45, 1x GE/POE-PD RJ45, and 2x GE SFP	8x GE RJ45 and 2x GE SFP	8x GE RJ45 and 2x GE SFP
Dedicated Management 10/100 Port	0	0	0
RJ-45 Serial Console Port	1	1	1
Form Factor	Desktop	Desktop / 19" rack bracket	Desktop / 19" rack bracket
Power over Ethernet (PoE) Ports	0	8 (802.3af/at)	8 (802.3af/at)
PoE Power Budget	0	65 W	130 W
Mean Time Between Failures	> 10 years	> 10 years	> 10 years
System Specifications			
Switching Capacity (Duplex)	20 Gbps	20 Gbps	20 Gbps
Packets Per Second (Duplex)	30 Mpps	30 Mpps	30 Mpps
MAC Address Storage	8 K	8 K	8 K
Network Latency	4 µs	4 µs	4 µs
VLANs Supported	4 K	4 K	4 K
Link Aggregation Group Size	8	8	8
Total Link Aggregation Groups	8	8	8
Packet Buffers	512 KB	512 KB	512 KB
DRAM	256 MB DDR3	256 MB DDR3	256 MB DDR3
FLASH	32 MB	32 MB	32 MB
ACL	768	768	768
Spanning Tree Instances	16	16	16
Dimensions			
Height x Depth x Width (inches)	1.18 x 4.72 x 7.09	1.73 x 8.23 x 9.85	1.73 x 8.23 x 9.85
Height x Depth x Width (mm)	30 x 120 x 180	44 x 209 x 250	44 x 209 x 250
Weight	1.36 lbs (0.62 kg)	3.75 lbs (1.70 kg)	4.05 lbs (1.84 kg)
Environment			
Power Required	100–240V AC, 50/60 Hz / PoE-PSE(al)	100–240V AC, 50/60 Hz	100–240V AC, 50/60 Hz
Power Supply	12V/1A DC power adapter included, PoE-PD Built in	AC built in	AC built in
Redundant Power	No	No	No
Power Consumption	6.2 W	74.4 W	139.2 W
Heat Dissipation	21.142 BTU/h	34.12 BTU/h	34.56 BTU/h
Operating Temperature	32°–113°F (0°–45°C)	32°–113°F (0°–45°C)	32°–113°F (0°–45°C)
Storage Temperature	-49°–158°F (-40°–70°C)	-40°–158°F (-40°–70°C)	-40°–158°F (-40°–70°C)
Humidity	5%–95% non-condensing	5%–95% non-condensing	5%–95% non-condensing
Air-Flow Direction	side-to-back	side-to-back	side-to-back
Noise Level	Fanless	Fanless	Fanless
Certification and Compliance			

FCC, CE, RCM, VCCI, BSMI, UL, CB, RoHS2

Warranty**Fortinet Warranty**

Limited lifetime* warranty on all models

* Fortinet Warranty Policy: <http://www.fortinet.com/doc/legal/EULA.pdf>

FortiSwitch 108F



FortiSwitch 108F-POE



FortiSwitch 108F-FPOE



Specifications

	FORTISWITCH 124E	FORTISWITCH 124E-POE	FORTISWITCH 124E-FPOE
Hardware Specifications			
Total Network Interfaces	24x GE RJ45 and 4x GE SFP	24x GE RJ45 and 4x GE SFP	24x GE RJ45 and 4x GE SFP
Dedicated Management 10/100 Port	0	0	0
RJ-45 Serial Console Port	1	1	1
Form Factor	1 RU Rack Mount	1 RU Rack Mount	1 RU Rack Mount
Power over Ethernet (PoE) Ports	0	12 (802.3af/at)	24 (802.3af/at)
PoE Power Budget	0	185 W	370 W
Mean Time Between Failures	> 10 years	> 10 years	> 10 years
System Specifications			
Switching Capacity (Duplex)	56 Gbps	56 Gbps	56 Gbps
Packets Per Second (Duplex)	83 Mpps	83 Mpps	83 Mpps
MAC Address Storage	8 K	8 K	8 K
Network Latency	4µs	4µs	4µs
VLANs Supported	4 K	4 K	4 K
Link Aggregation Group Size	8	8	8
Total Link Aggregation Groups	8	8	8
Packet Buffers	512 KB	512 KB	512 KB
DRAM	256 MB DDR3	256 MB DDR3	256 MB DDR3
FLASH	32 MB	32 MB	32 MB
ACL	640	640	640
Spanning Tree Instances	16	16	16
Dimensions			
Height x Depth x Width (inches)	1.7 × 8.2 × 13	1.7 × 12.2 × 17.3	1.7 × 12.2 × 17.3
Height x Depth x Width (mm)	44 × 209 × 330	44 × 309 × 440	44 × 309 × 440
Weight	4.7 lbs (2.13 kg)	11.1 lbs (5.03 kg)	11.2 lbs (5.03 kg)
Environment			
Power Required	100–240V AC, 50/60 Hz	100–240V AC, 50/60 Hz	100–240V AC, 50/60 Hz
Power Supply	AC Built in	AC Built in	AC Built in
Redundant Power	—	—	—
Power Consumption* (Average / Maximum)	15.83 W / 17.79 W	202.78 W / 205.45 W	387.78 W / 390.45 W
Heat Dissipation	54 BTU/h	60.67 BTU/h	60.67 BTU/h
Operating Temperature	32°–113°F (0°–45°C)	32°–113°F (0°–45°C)	32°–113°F (0°–45°C)
Storage Temperature	–40°–158°F (–40°–70°C)	–40°–158°F (–40°–70°C)	–40°–158°F (–40°–70°C)
Humidity	10%–90% non-condensing	10%–90% non-condensing	10%–90% non-condensing
Air-Flow Direction	side-to-back	side-to-back	side-to-back
Noise Level	Fanless	39.3 dBA	42.5 dBA
Certification and Compliance		FCC, CE, RCM, VCCI, BSMI, UL, CB, RoHS2	
Warranty			
Fortinet Warranty		Limited lifetime** warranty on all models	

* POE models power consumption is similar to non-POE model if POE is not in use

** Fortinet Warranty Policy: <http://www.fortinet.com/doc/legal/EULA.pdf>



FortiSwitch 124E



FortiSwitch 124E-POE



FortiSwitch 124E-FPOE



Specifications

	FORTISWITCH 148E	FORTISWITCH 148E-POE
Hardware Specifications		
Total Network Interfaces	48x GE RJ45 and 4x GE SFP	48x GE RJ45 and 4x GE SFP
Dedicated Management 10/100 Port	0	0
RJ-45 Serial Console Port	1	1
Form Factor	1 RU Rack Mount	1 RU Rack Mount
Power over Ethernet (PoE) Ports	0	24 (802.3af/at)
PoE Power Budget	0	370 W
Mean Time Between Failures	> 10 years	> 10 years
System Specifications		
Switching Capacity (Duplex)	104 Gbps	104 Gbps
Packets Per Second (Duplex)	155 Mpps	155 Mpps
MAC Address Storage	16 K	16 K
Network Latency	3860 ns	3860 ns
VLANs Supported	4 K	4 K
Link Aggregation Group Size	8	8
Total Link Aggregation Groups	16	16
Packet Buffers	1.5 MB	1.5 MB
DRAM	256 MB DDR3	256 MB DDR3
FLASH	64 MB	64 MB
ACL	640	640
Spanning Tree Instances	16	16
Dimensions		
Height x Depth x Width (inches)	1.73 × 12.2 × 17.3	1.73 × 13.7 × 17.3
Height x Depth x Width (mm)	44 × 309 × 440	44 × 348 × 440
Weight	8.6 lbs (3.9 kg)	11.5 lbs (5.2 kg)
Environment		
Power Required	100–240V AC, 50/60 Hz	100–240V AC, 50/60 Hz
Power Supply	AC Built in	AC Built in
Redundant Power	No	No
Power Consumption* (Average / Maximum)	19.804 W / 22.137 W	389.742 W /393.109 W
Heat Dissipation	67.574 BTU/h	78.82 BTU/h
Operating Temperature	32°–113°F (0°–45°C)	32°–113°F (0°–45°C)
Storage Temperature	–4°–158°F (–20°–70°C)	–4°–158°F (–20°–70°C)
Humidity	10%–90% non-condensing	10%–90% non-condensing
Air-Flow Direction	side-to-back	side-to-back
Noise Level	36.9 dBA	38.7 dBA
Certification and Compliance		
FCC, CE, RCM, VCCI, BSMI, UL, CB, RoHS2		
Warranty		
Fortinet Warranty	Limited lifetime** warranty on all models	

* POE models power consumption is similar to non-POE model if POE is not in use.

** Fortinet Warranty Policy: <http://www.fortinet.com/doc/legal/EULA.pdf>



FortiSwitch 148E



FortiSwitch 148E-POE



Specifications

	FORTISWITCH 124F	FORTISWITCH 124F-POE	FORTISWITCH 124F-FPOE
Hardware Specifications			
Total Network Interfaces	24x GE RJ45 and 4x 10GE SFP+	24x GE RJ45 and 4x 10GE SFP+	24x GE RJ45 and 4x 10GE SFP+
Dedicated Management 10/100 Port	0	0	0
RJ-45 Serial Console Port	1	1	1
Form Factor	1 RU Rack Mount	1 RU Rack Mount	1 RU Rack Mount
Power over Ethernet (PoE) Ports	0	12 (802.3af/at)	24 (802.3af/at)
PoE Power Budget	0	185 W	370 W
Mean Time Between Failures	> 10 years	> 10 years	> 10 years
System Specifications			
Switching Capacity (Duplex)	128 Gbps	128 Gbps	128 Gbps
Packets Per Second (Duplex)	190 Mpps	190 Mpps	190 Mpps
MAC Address Storage	32 K	32 K	32 K
Network Latency	< 1µs	< 1µs	< 1µs
VLANs Supported	4 K	4 K	4 K
Link Aggregation Group Size	8	8	8
Total Link Aggregation Groups	16	16	16
Packet Buffers	2 MB	2 MB	2 MB
DRAM	512 MB DDR3	512 MB DDR3	512 MB DDR3
FLASH	64 MB	64 MB	64 MB
ACL	768	768	768
Spanning Tree Instances	16	16	16
Dimensions			
Height x Depth x Width (inches)	1.73 × 9.06 × 12.99	1.73 × 10.24 × 17.32	1.73 × 10.24 × 17.32
Height x Depth x Width (mm)	44 × 230 × 330	44 × 260 × 440	44 × 260 × 440
Weight	4.48 lbs (2.03 kg)	7.85 lbs (3.56 kg)	8.42 lbs (3.82 kg)
Environment			
Power Required	100–240V AC, 50–60 Hz	100–240V AC, 50–60 Hz	100–240V AC, 50–60 Hz
Power Supply	AC built in	AC built in	AC built in
Redundant Power	No	No	No
Power Consumption* (Average / Maximum)	24.8 W / 26.3 W	235.9 W / 237.4 W	449.8 W / 451.3 W
Heat Dissipation	89.683 BTU/h	102.982 BTU/h	118.327 BTU/h
Operating Temperature	32°–113°F (0°–45°C)	32°–113°F (0°–45°C)	32°–113°F (0°–45°C)
Storage Temperature	-4°–158°F (-20°–70°C)	-4°–158°F (-20°–70°C)	-4°–158°F (-20°–70°C)
Humidity	10%–90% non-condensing	10%–90% non-condensing	10%–90% non-condensing
Air-Flow Direction	side-to-back	side-to-back	side-to-back
Noise Level	Fanless	46.3 dBA	45.8 dBA
Certification and Compliance			
		FCC, CE, RCM, VCCI, BSMI, UL, CB, RoHS2	
Warranty			
Fortinet Warranty		Limited lifetime** warranty on all models	

* POE models power consumption is similar to non-POE model if POE is not in use

** Fortinet Warranty Policy: <http://www.fortinet.com/doc/legal/EULA.pdf>



FortiSwitch 124F



FortiSwitch 124F-POE



FortiSwitch 124F-FPOE



Specifications

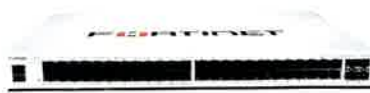
	FORTISWITCH 148F	FORTISWITCH 148F-POE	FORTISWITCH 148F-FPOE
Hardware Specifications			
Total Network Interfaces	48x GE RJ45 and 4x 10GE SFP+	48x GE RJ45 and 4x 10GE SFP+	48x GE RJ45 and 4x 10GE SFP+
Dedicated Management 10/100 Port	0	0	0
RJ-45 Serial Console Port	1	1	1
Form Factor	1 RU Rack Mount	1 RU Rack Mount	1 RU Rack Mount
Power over Ethernet (PoE) Ports	0	24 (802.3af/at)	48 (802.3af/at)
PoE Power Budget	0	370 W	740 W
Mean Time Between Failures	> 10 years	> 10 years	> 10 years
System Specifications			
Switching Capacity (Duplex)	176 Gbps	176 Gbps	176 Gbps
Packets Per Second (Duplex)	260 Mpps	260 Mpps	260 Mpps
MAC Address Storage	32 K	32 K	32 K
Network Latency	< 1µs	< 1µs	< 1µs
VLANs Supported	4 K	4 K	4 K
Link Aggregation Group Size	8	8	8
Total Link Aggregation Groups	16	16	16
Packet Buffers	2 MB	2 MB	2 MB
DRAM	512 MB DDR3	512 MB DDR3	512 MB DDR3
FLASH	64 MB	64 MB	64 MB
ACL	768	768	768
Spanning Tree Instances	16	16	16
Dimensions			
Height x Depth x Width (inches)	1.73 x 10.24 x 17.32	1.73 x 12.20 x 17.32	1.73 x 12.20 x 17.32
Height x Depth x Width (mm)	44 x 260 x 440	44 x 310 x 440	44 x 310 x 440
Weight	7.63 lbs (3.46 kg)	10.32 lbs (4.68 kg)	10.32 lbs (4.68 kg)
Environment			
Power Required	100–240V AC, 50–60 Hz	100–240V AC, 50–60 Hz	100–240V AC, 50–60 Hz
Power Supply	AC built in	AC built in	AC built in
Redundant Power	No	No	No
Power Consumption* (Average / Maximum)	55.8 W / 57 W	474.8 W / 476.3 W	893.5 W / 895.7 W
Heat Dissipation	194.37 BTU/h	195.73 BTU/h	198.46 BTU/h
Operating Temperature	32°–113°F (0°–45°C)	32°–113°F (0°–45°C)	32°–113°F (0°–45°C)
Storage Temperature	-4°–158°F (-20°–70°C)	-4°–158°F (-20°–70°C)	-4°–158°F (-20°–70°C)
Humidity	10%–90% non-condensing	10%–90% non-condensing	10%–90% non-condensing
Air-Flow Direction	side-to-back	side-to-back	side-to-back
Noise Level	42.8 dBA	46.9 dBA	46.5 dBA
Certification and Compliance			
		FCC, CE, RCM, VCCI, BSMI, UL, CB, RoHS2	
Warranty			
Fortinet Warranty		Limited lifetime** warranty on all models	

* POE models power consumption is similar to non-POE model if POE is not in use

** Fortinet Warranty Policy: <http://www.fortinet.com/doc/legal/EULA.pdf>



FortiSwitch 148F



FortiSwitch 148F-POE



FortiSwitch 148F-FPOE



Specifications

	FORTISWITCH 224D-FPOE	FORTISWITCH 224E	FORTISWITCH 224E-POE
Hardware Specifications			
Total Network Interfaces	24x GE RJ45 ports and 4x GE SFP ports	24x GE RJ45 ports and 4x GE SFP ports	24x GE RJ45 ports and 4x GE SFP ports
Dedicated Management 10/100 Port	1	1	1
RJ-45 Serial Console Port	1	1	1
Form Factor	1 RU Rack Mount	1 RU Rack Mount	1 RU Rack Mount
Power over Ethernet (PoE) Ports	24 (802.3af/802.3at)	NA	12 (802.3af/802.3at)
PoE Power Budget	370 W	NA	180 W
Mean Time Between Failures	> 10 years	> 10 years	> 10 years
System Specifications			
Switching Capacity (Duplex)	56 Gbps	56 Gbps	56 Gbps
Packets Per Second (Duplex)	83 Mpps	83 Mpps	83 Mpps
MAC Address Storage	16 K	16 K	16 K
Network Latency	< 1µs	< 1µs	< 1µs
VLANs Supported	4 K	4 K	4 K
Link Aggregation Group Size	8	8	8
Total Link Aggregation Groups	Up to number of ports	Up to number of ports	Up to number of ports
Packet Buffers	1.5 MB	1.5 MB	1.5 MB
DRAM	512 MB DDR3	512 MB DDR3	512 MB DDR3
FLASH	128 MB	128 MB	128 MB
ACL	512	512	512
Spanning Tree Instances	16	16	16
Route Entries (IPv4/IPv6)	64/32	64/32	64/32
Host Entries	512	512	512
Dimensions			
Height x Depth x Width (inches)	1.73 x 12.2 x 17.5	1.73 x 9 x 12.99	1.73 x 9 x 12.99
Height x Depth x Width (mm)	44 x 310 x 440	44 x 230 x 330	44 x 230 x 330
Weight	10.64 lbs (4.83 kg)	4.78 lbs (2.17 kg)	5.37 lbs (2.44 kg)
Environment			
Power Required	100–240V AC, 50/60 Hz	100–240V AC, 50/60 Hz	100–240V AC, 50/60 Hz
Power Supply	AC built in	AC built in	AC built in
Redundant Power	Optional FRPS-740	Redundant AC	Optional FRPS-740
Power Consumption* (Average / Maximum)	380 W / 397 W	17.2 W / 17.3 W	220.18 W / 223.57 W
Heat Dissipation	85 BTU/h	59.095 BTU/h	74.29554 BTU/h
Operating Temperature	32°–122°F (0°–50°C)	32°–122°F (0°–50°C)	32°–122°F (0°–50°C)
Storage Temperature	-4°–158°F (-20°–70°C)	-4°–158°F (-20°–70°C)	-4°–158°F (-20°–70°C)
Humidity	10%–90% non-condensing	10%–90% non-condensing	10%–90% non-condensing
Air-Flow Direction	side-to-back	side-to-back	side-to-back
Noise Level	42.7 dBA	Fanless	30.6 dBA
Certification and Compliance			
		FCC, CE, RCM, VCCI, BSMI, UL, CB, RoHS2	
Warranty			
Fortinet Warranty		Limited lifetime** warranty on all models	

* POE models power consumption is similar to non-POE model if POE is not in use

** Fortinet Warranty Policy: <http://www.fortinet.com/doc/legal/EULA.pdf>



FortiSwitch 224D-FPOE



FortiSwitch 224E



FortiSwitch 224E-POE



Specifications

	FORTISWITCH 248D	FORTISWITCH 248E-POE	FORTISWITCH 248E-FPOE
Hardware Specifications			
Total Network Interfaces	48x GE RJ45 ports and 4x GE SFP ports	48x GE RJ45 ports and 4x GE SFP ports	48x GE RJ45 ports and 4x GE SFP ports
Dedicated Management 10/100 Port	1	1	1
RJ-45 Serial Console Port	1	1	1
Form Factor	1 RU Rack Mount	1 RU Rack Mount	1 RU Rack Mount
Power over Ethernet (PoE) Ports	—	24 (802.3af/802.3at)	48 (802.3af/802.3at)
PoE Power Budget	N/A	370 W	740 W
Mean Time Between Failures	> 10 years	> 10 years	> 10 years
System Specifications			
Switching Capacity (Duplex)	104 Gbps	104 Gbps	104 Gbps
Packets Per Second (Duplex)	155 Mpps	155 Mpps	155 Mpps
MAC Address Storage	16 K	16 K	16 K
Network Latency	< 1µs	< 1µs	< 1µs
VLANs Supported	4 K	4 K	4 K
Link Aggregation Group Size	8	8	8
Total Link Aggregation Groups	Up to number of ports	Up to number of ports	Up to number of ports
Packet Buffers	1.5 MB	1.5 MB	1.5 MB
DRAM	512 MB DDR3	512 MB DDR3	512 MB DDR3
FLASH	128 MB	128 MB	128 MB
ACL	512	512	512
Spanning Tree Instances	16	16	16
Route Entries (IPv4/IPv6)	64/32	64/32	64/32
Host Entries	512	512	512
Dimensions			
Height x Depth x Width (inches)	1.73 x 9.68 x 17.3	1.73 x 16.1 x 17.3	1.73 x 16.1 x 17.3
Height x Depth x Width (mm)	44 x 246 x 440	44 x 410 x 440	44 x 410 x 440
Weight	7.81 lbs (3.54 kg)	12.12 lbs (5.5 kg)	13.44 lbs (6.1 kg)
Environment			
Power Required	100–240V AC, 50/60 Hz	100–240V AC, 50/60 Hz	100–240V AC, 50/60 Hz
Power Supply	AC built in	AC built in	AC built in
Redundant Power	—	Optional FRPS-740	Optional FRPS-740
Power Consumption* (Average / Maximum)	38.66 W / 39.19 W	457.46 W / 466.47 W	842 W / 855.02 W
Heat Dissipation	134 BTU/h	177.14268 BTU/h	162.87865 BTU/h
Operating Temperature	32°–122°F (0°–50°C)	32°–122°F (0°–50°C)	32°–122°F (0°–50°C)
Storage Temperature	-4°–158°F (-20°–70°C)	-4°–158°F (-20°–70°C)	-4°–158°F (-20°–70°C)
Humidity	10%–90% non-condensing	10%–90% non-condensing	10%–90% non-condensing
Air-Flow Direction	side-to-back	side-to-back	side-to-back
Noise Level	32.3 dBA	34.2 dBA	44.7 dBA
Certification and Compliance			
		FCC, CE, RCM, VCCI, BSMI, UL, CB, RoHS2	

Warranty

Fortinet Warranty

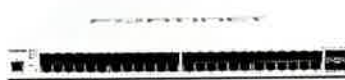
Limited Lifetime** warranty on all models

* POE models power consumption is similar to non-POE model if POE is not in use

** Fortinet Warranty Policy: <http://www.fortinet.com/doc/legal/EULA.pdf>



FortiSwitch 248D



FortiSwitch 248E-POE



FortiSwitch 248E-FPOE



Specifications

	FORTISWITCH-424E-FIBER	FORTISWITCH-M426E-FPOE
Hardware Specifications		
Total Network Interfaces	24x GE SFP and 4× 10GE SFP+ ports Note: SFP+ ports are compatiblle with 1 GE SFP	16x GE RJ45, 8× 2.5 GE RJ45 ports, 2× 5 GE RJ45, and 4× 10 GE SFP+ ports Note: SFP+ ports are compatible with 1 GE SFP
Dedicated Management 10/100 Port	1	1
RJ-45 Serial Console Port	1	1
Form Factor	1 RU Rack Mount	1 RU Rack Mount
Power over Ethernet (PoE) Ports	N/A	24 [16× 802.3af/at, 8× 802.3af/at/UPOE (60W)]
PoE Power Budget	N/A	420 W
Mean Time Between Failures	> 10 years	> 10 years
System Specifications		
Switching Capacity (Duplex)	128 Gbps	172 Gbps
Packets Per Second (Duplex)	204 Mpps	255 Mpps
MAC Address Storage	32 K	16 K
Network Latency	< 1µs	< 1µs
VLANs Supported	4 K	4 K
Link Aggregation Group Size	8	8
Total Link Aggregation Groups	Up to number of ports	Up to number of ports
Packet Buffers	4 MB	2 MB
DRAM	1 GB DDR4	1 GB DDR4
FLASH	256 MB	256 MB
ACL	1.5k	1k
Spanning Tree Instances	16	16
Route Entries (IPv4/IPv6)	16k/8k	1000/500
Host Entries	16k	5k
Dimensions		
Height x Depth x Width (inches)	1.75 × 7.87 × 17.3	1.73 × 16.14 × 17.3
Height x Depth x Width (mm)	44 × 200 × 440	44 × 410 × 440
Weight	5.62 lbs (2.55 kg)	13.00 lbs (5.9 kg)
Environment		
Power Required	100–240V AC, 50/60 Hz	100–240V AC, 50/60 Hz
Power Supply	AC built in	AC built in
Redundant Power	Redundant AC	Redundant AC
Power Consumption* (Average / Maximum)	36 W / 38 W	441 W / 442 W
Heat Dissipation	132.5 BTU/h	132.734 BTU/h
Operating Temperature	32°–122°F (0°–50°C)	32°–122°F (0°–50°C)
Storage Temperature	–4°–158°F (–20°–70°C)	–4°–158°F (–20°–70°C)
Humidity	5%–95% non-condensing	5%–95% non-condensing
Air-Flow Direction	side-to-back	side-to-back
Noise Level	32.8 dBA	35 dBA
Certification and Compliance		
FCC, CE, RCM, VCCI, BSMI, UL, CB, RoHS2		
Warranty		
Fortinet Warranty	Limited Lifetime** warranty on all models	

* POE models power consumption is similar to non-POE model if POE is not in use

** Fortinet Warranty Policy: <http://www.fortinet.com/doc/legal/EULA.pdf>



Specifications

	FORTISWITCH 424E	FORTISWITCH 424E-POE	FORTISWITCH 424E-FPOE
Hardware Specifications			
Total Network Interfaces	24x GE RJ45 and 4x10 GE SFP+ ports Note: SFP+ ports are compatible with 1 GE SFP	24x GE RJ45 and 4x10 GE SFP+ ports Note: SFP+ ports are compatible with 1 GE SFP	24x GE RJ45 and 4x10 GE SFP+ ports Note: SFP+ ports are compatible with 1 GE SFP
Dedicated Management 10/100 Port	1	1	1
RJ-45 Serial Console Port	1	1	1
Form Factor	1 RU Rack Mount	1 RU Rack Mount	1 RU Rack Mount
Power over Ethernet (PoE) Ports		24 (802.3af/at)	24 (802.3af/at)
PoE Power Budget	N/A	250 W	421 W
Mean Time Between Failures	> 10 years	> 10 years	> 10 years
System Specifications			
Switching Capacity (Duplex)	128 Gbps	128 Gbps	128 Gbps
Packets Per Second (Duplex)	204 Mpps	204 Mpps	204 Mpps
MAC Address Storage	16 K	16 K	16 K
Network Latency	< 1µs	< 1µs	< 1µs
VLANs Supported	4 K	4 K	4 K
Link Aggregation Group Size	8	8	8
Total Link Aggregation Groups	Up to number of ports	Up to number of ports	Up to number of ports
Packet Buffers	2 MB	2 MB	2 MB
DRAM	1 GB DDR4	1 GB DDR4	1 GB DDR4
FLASH	256 MB	256 MB	256 MB
ACL	1k	1k	1k
Spanning Tree Instances	16	16	16
Route Entries (IPv4/IPv6)	1000/500	1000/500	1000/500
Host Entries	5k	5k	5k
Dimensions			
Height x Depth x Width (inches)	1.75 x 10.23 x 17.3	1.75 x 16.14 x 17.3	1.75 x 16.14 x 17.3
Height x Depth x Width (mm)	44 x 260 x 440	44 x 410 x 440	44 x 410 x 440
Weight	6.83 lbs (3.1 kg)	11.57 lbs (5.25 kg)	12.72 lbs (5.77 kg)
Environment			
Power Required	100–240V AC, 50/60 Hz	100–240V AC, 50/60 Hz	100–240V AC, 50/60 Hz
Power Supply	AC built in	AC built in	AC built in
Redundant Power	Redundant AC	Redundant AC	Redundant AC
Power Consumption* (Average / Maximum)	22.3 W / 23.6 W	281.3 W / 283.5 W	431.2 W / 433.7 W
Heat Dissipation	76.04 BTU/h	102.64 BTU/h	117.2 BTU/h
Operating Temperature	32°–122°F (0°–50°C)	32°–122°F (0°–50°C)	32°–122°F (0°–50°C)
Storage Temperature	–40°–158°F (–40°–70°C)	–4°–158°F (–40°–70°C)	–40°–158°F (–40°–70°C)
Humidity	5%–95% non-condensing	5%–95% non-condensing	5%–95% non-condensing
Air-Flow Direction	side-to-back	side-to-back	side-to-back
Noise Level	32.3 dBA	31.8 dBA	30.9 dBA

Certification and Compliance

FCC, CE, RCM, VCCI, BSMI, UL, CB, RoHS2

Warranty

Fortinet Warranty

Limited lifetime** warranty on all models

* POE models power consumption is similar to non-POE model if POE is not in use

** Fortinet Warranty Policy: <http://www.fortinet.com/doc/legal/EULA.pdf>

FortiSwitch 424E



FortiSwitch 424E-POE



FortiSwitch 424E-FPOE



Specifications

	FORTISWITCH 448E	FORTISWITCH 448E-POE	FORTISWITCH 448E-FPOE
Hardware Specifications			
Total Network Interfaces	48x GE RJ45 and 4x 10GE SFP+ ports Note: SFP+ ports are compatible with 1 GE SFP	48x GE RJ45 and 4x 10GE SFP+ ports Note: SFP+ ports are compatible with 1 GE SFP	48x GE RJ45 and 4x 10GE SFP+ ports Note: SFP+ ports are compatible with 1 GE SFP
Dedicated Management 10/100 Port	1	1	1
RJ-45 Serial Console Port	1	1	1
Form Factor	1 RU Rack Mount	1 RU Rack Mount	1 RU Rack Mount
Power over Ethernet (PoE) Ports	—	48 (802.3af/at)	48 (802.3af/at)
PoE Power Budget	—	421 W	772 W
Mean Time Between Failures	> 10 years	> 10 years	> 10 years
System Specifications			
Switching Capacity (Duplex)	176 Gbps	176 Gbps	176 Gbps
Packets Per Second (Duplex)	262 Mpps	262 Mpps	262 Mpps
MAC Address Storage	32 K	32 K	32 K
Network Latency	<1µs	<1µs	<1µs
VLANs Supported	4 K	4 K	4 K
Link Aggregation Group Size	8	8	8
Total Link Aggregation Groups	Up to number of ports	Up to number of ports	Up to number of ports
Packet Buffers	4 MB	4 MB	4 MB
DRAM	1GB DDR4	1GB DDR4	1GB DDR4
FLASH	256 MB	256 MB	256 MB
ACL	1.5k	1.5k	1.5k
Spanning Tree Instances	16	16	16
Route Entries (IPv4/IPv6)	16k/8k	16k/8k	16k/8k
Host Entries	16k	16k	16k
Dimensions			
Height x Depth x Width (inches)	1.75 × 12.2 × 17.3	1.73 × 16.1 × 17.3	1.73 × 16.1 × 17.3
Height x Depth x Width (mm)	44 × 310 × 440	44 × 410 × 440	44 × 410 × 440
Weight	9.17 lbs (4.16 kg)	13.8 lbs (6.26 kg)	14.04 lbs (6.37 kg)
Environment			
Power Required	100–240V AC, 50/60 Hz	100–240V AC, 50/60 Hz	100–240V AC, 50/60 Hz
Power Supply	AC built in	AC built in	AC built in
Redundant Power	Redundant AC	Redundant AC	Redundant AC
Power Consumption* (Average / Maximum)	46.5 W / 47.81 W	440.12 W / 442.234 W	921.4 W / 923.6 W
Heat Dissipation	163.032 BTU/h	163.066 BTU/h	163.1 BTU/h
Operating Temperature	32°–122°F (0°–50°C)	32°–122°F (0°–50°C)	32°–122°F (0°–50°C)
Storage Temperature	–4°–158°F (–20°–70°C)	–4°–158°F (–20°–70°C)	–4°–158°F (–20°–70°C)
Humidity	10%–90% non condensing	10%–90% non condensing	10%–90% non condensing
Air-Flow Direction	side-to-back	side-to-back	side-to-back
Noise Level	35.5 dBA	38.3 dBA	50.7 dBA
Certification and Compliance			
FCC, CE, RCM, VCCI, BSMI, UL, CB, RoHS2			
Warranty			
Fortinet Warranty			
Limited lifetime** warranty on all models			

* POE models power consumption is similar to non-POE model if POE is not in use

** Fortinet Warranty Policy: <http://www.fortinet.com/doc/legal/EULA.pdf>



FortiSwitch 448E



FortiSwitch 448E-POE



FortiSwitch 448E-FPOE



Specifications

	FORTISWITCH 524D	FORTISWITCH 524D-FPOE
Hardware Specifications		
Total Network Interfaces	24 GE/RJ45 ports, 4× 10 GE SFP+ ports and 2× 40 GE QSFP+ Note: SFP+ ports are compatible with 1G SFP	24 GE/RJ45 ports, 4× 10 GE SFP+ ports and 2× 40 GE QSFP+ Note: SFP+ ports are compatible with 1G SFP
Dedicated Management 10/100/1000 Ports	1	1
RJ-45 Serial Console Port	1	1
Form Factor	1 RU Rack Mount	1 RU Rack Mount
Power over Ethernet (PoE) Ports	N/A	24 (802.3af/at)
PoE Power Budget (single/dual PSU)	N/A	400 W / 720 W
Mean Time Between Failures	> 10 years	> 10 years
System Specifications		
Switching Capacity (Duplex)	288 Gbps	288 Gbps
Packets Per Second (Duplex)	428 Mpps	428 Mpps
MAC Address Storage	36 K	36 K
Network Latency	< 2µs	< 2µs
VLANs Supported	4 K	4 K
Link Aggregation Group Size	24	24
Total Link Aggregation Groups	Up to number of ports	Up to number of ports
Packet Buffers	4 MB	4 MB
DRAM	2 GB DDR3	2 GB DDR3
FLASH	128 MB	128 MB
ACL	1k	1k
Spanning Tree Instances	32	32
Route Entries (IPv4/IPv6)	16k/8k	16k/8k
Multicast Route Entries	8k	8k
Host Entries	16k	16k
Dimensions		
Height x Depth x Width (inches)	1.75 × 13.8 × 17.3	1.75 × 13.8 × 17.3
Height x Depth x Width (mm)	44 × 350 × 439	44 × 350 × 439
Weight	13.6 lbs (6.2 kg)	15.74 lbs (7.14 kg)
Environment		
Power Required	100~240V AC, 50/60 Hz	100~240V AC, 50/60 Hz
Power Supply	150 W AC PSU*	600 W AC PSU*
Redundant Power	Optional FS-PSU-150*	Optional FS-PSU-600*
Power Consumption** (Average / Maximum)	73 W / 75 W	570 W / 579 W (full PoE load for single power supply)
Heat Dissipation	247 BTU/h	296 BTU/h (full PoE load for single power supply)
Operating Temperature	32°~113°F (0°~45°C)	32°~113°F (0°~45°C)
Storage Temperature	-40°~158°F (-40°~70°C)	-40°~158°F (-40°~70°C)
Humidity	5%~95% non-condensing	5%~95% non-condensing
Air-Flow Direction	front-to-back	front-to-back
Noise Level	57.3 dBA	57.3 dBA
Certification and Compliance		
	FCC, CE, RCM, VCCI, BSMI, UL, CB, RoHS2	FCC, CE, RCM, VCCI, BSMI, UL, CB, RoHS2
Warranty		
Fortinet Warranty	Limited lifetime*** warranty on all models	Limited lifetime*** warranty on all models

*FS-524D, FS-524D-FPOE, FS-548D, FS-548D-FPOE Power Supply Units are Hot-Swappable.

** POE models power consumption is similar to non-POE model if POE is not in use

*** Fortinet Warranty Policy: <http://www.fortinet.com/doc/legal/EULA.pdf>



FortiSwitch 524D



Specifications

	FORTISWITCH 548D	FORTISWITCH 548D-FPOE
Hardware Specifications		
Total Network Interfaces	48x GE/RJ45 ports, 4x 10 GE SFP+ ports and 2x 40 GE QSFP+ Note: SFP+ ports are compatible with 1G SFP	48x GE/RJ45 ports, 4x 10 GE SFP+ ports and 2x 40 GE QSFP+ Note: SFP+ ports are compatible with 1G SFP
Dedicated Management 10/100/1000 Ports	1	1
RJ-45 Serial Console Port	1	1
Form Factor	1 RU Rack Mount	1 RU Rack Mount
Power over Ethernet (PoE) Ports	N/A	48 (802.3af/at)
PoE Power Budget (single/dual PSU)	N/A	750 W / 1440 W
Mean Time Between Failures	> 10 years	> 10 years
System Specifications		
Switching Capacity (Duplex)	336 Gbps	336 Gbps
Packets Per Second (Duplex)	512 Mpps	512 Mpps
MAC Address Storage	36 K	36 K
Network Latency	< 2µs	< 2µs
VLANs Supported	4 K	4 K
Link Aggregation Group Size	48	48
Total Link Aggregation Groups	Up to number of ports	Up to number of ports
Packet Buffers	4 MB	4 MB
DRAM	2 GB DDR3	2 GB DDR3
FLASH	128 MB	128 MB
ACL	1k	1k
Spanning Tree Instances	32	32
Route Entries (IPv4/IPv6)	16k/8k	16k/8k
Multicast Route Entries	8k	8k
Host Entries	16k	16k
Dimensions		
Height x Depth x Width (inches)	1.75 x 13.8 x 17.3	1.75 x 13.8 x 17.3
Height x Depth x Width (mm)	44 x 350 x 439	44 x 350 x 439
Weight	14.1 lbs (6.4 kg)	15.74 lbs (7.14 kg)
Environment		
Power Required	100–240V AC, 50/60 Hz	100–240V AC, 50/60 Hz
Power Supply	150 W AC PSU*	920 W AC PSU*
Redundant Power	Optional FS-PSU-150*	Optional FS-PSU-920*
Power Consumption** (Average / Maximum)	74 W / 77 W	925 W / 961 W (full PoE load for single power supply)
Heat Dissipation	252 BTU/h	318 BTU/h (full PoE load for single power supply)
Operating Temperature	32°–113°F (0°–45°C)	32°–113°F (0°–45°C)
Storage Temperature	-40°–158°F (-40°–70°C)	-40°–158°F (-40°–70°C)
Humidity	5%–95% non-condensing	5%–95% non-condensing
Air-Flow Direction	front-to-back	front-to-back
Noise Level	57.3 dBA	57.3 dBA
Certification and Compliance		
	FCC, CE, RCM, VCCI, BSMI, UL, CB, RoHS2	FCC, CE, RCM, VCCI, BSMI, UL, CB, RoHS2
Warranty		
Fortinet Warranty	Limited lifetime*** warranty on all models	Limited lifetime*** warranty on all models

*FS-524D, FS-524D-FPOE, FS-548D, FS-548D-FPOE Power Supply Units are Hot-Swappable.

** POE models power consumption is similar to non-POE model if POE is not in use

*** Fortinet Warranty Policy: <http://www.fortinet.com/doc/legal/EULA.pdf>



FortiSwitch 548D



Ordering Information

Product	SKU	Description
FortiSwitch Models		
FortiSwitch 108E-POE	FS-108E-POE	Layer 2 FortiGate switch controller compatible PoE+ switch with 8 GE RJ45 + 2 SFP ports, 4 port PoE with maximum 65 W PoE limit. Fanless.
FortiSwitch 108E-FPOE	FS-108E-FPOE	Layer 2 FortiGate switch controller compatible PoE+ switch with 8 GE RJ45 + 2 SFP ports, 8 port PoE with maximum 130 W PoE limit. Fanless.
FortiSwitch 108F	FS-108F	Layer 2 FortiGate switch controller compatible switch with 8 x GE RJ45 ports, 2 x GE SFP, Fanless, 12V/3A power adapter of input voltage 100 – 240VAC, and PSE dual powered.
FortiSwitch 108F-POE	FS-108F-POE	Layer 2 FortiGate switch controller compatible PoE+ switch with 8 x GE RJ45 ports, 2 x GE SFP, Fanless with automatic Max 65W POE output limit.
FortiSwitch 108F-FPOE	FS-108F-FPOE	Layer 2 FortiGate switch controller compatible PoE+ switch with 8 x GE RJ45 ports, 2 x GE SFP, Fanless with automatic Max 130W POE output limit.
FortiSwitch 124E	FS-124E	Layer 2 FortiGate switch controller compatible switch with 24 GE RJ45 + 4 SFP ports. Fanless.
FortiSwitch 124E-POE	FS-124E-POE	Layer 2 FortiGate switch controller compatible PoE+ switch with 24 GE RJ45 + 4 SFP ports, 12 port PoE with maximum 185 W limit.
FortiSwitch 124E-F-POE	FS-124E-FPOE	Layer 2 FortiGate switch controller compatible PoE+ switch with 24 GE RJ45 + 4 SFP ports, 24 port PoE with maximum 370 W limit.
FortiSwitch 148E	FS-148E	Layer 2 FortiGate switch controller compatible switch with 48 GE RJ45 + 4 SFP ports.
FortiSwitch 148E-POE	FS-148E-POE	Layer 2 FortiGate switch controller compatible PoE+ switch with 48 GE RJ45 + 4 SFP ports, 24 port PoE with maximum 370 W limit.
FortiSwitch 124F	FS-124F	Layer 2 FortiGate switch controller compatible switch with 24 GE RJ45 + 4 10G SFP+ ports. Fanless.
FortiSwitch 124F-POE	FS-124F-POE	Layer 2 FortiGate switch controller compatible PoE+ switch with 24 GE RJ45 + 4 10G SFP+ ports, 12 port PoE with maximum 185 W limit.
FortiSwitch 124F-FPOE	FS-124F-FPOE	Layer 2 FortiGate switch controller compatible PoE+ switch with 24 GE RJ45 + 4 10G SFP+ ports, 24 port PoE with maximum 370 W limit.
FortiSwitch 148F	FS-148F	Layer 2 FortiGate switch controller compatible switch with 48 GE RJ45 + 4 10G SFP+ ports.
FortiSwitch 148F-POE	FS-148F-POE	Layer 2 FortiGate switch controller compatible PoE+ switch with 48 GE RJ45 + 4 10G SFP+ ports, 24 port PoE with maximum 370 W limit.
FortiSwitch 148F-FPOE	FS-148F-FPOE	Layer 2 FortiGate switch controller compatible PoE+ switch with 48 GE RJ45 + 4 10G SFP+ ports, 48 port PoE with maximum 740 W limit.
FortiSwitch 224D-FPOE	FS-224D-FPOE	Layer 2/3 FortiGate switch controller compatible PoE+ switch with 24 GE RJ45 + 4 SFP ports, 24 port PoE with maximum 370 W limit.
FortiSwitch 224E	FS-224E	Layer 2/3 FortiGate switch controller compatible switch with 24 GE RJ45 + 4 SFP ports. Fanless.
FortiSwitch 224E-POE	FS-224E-POE	Layer 2/3 FortiGate switch controller compatible PoE+ switch with 24 GE RJ45 + 4 SFP ports, 12 port PoE with maximum 180 W limit.
FortiSwitch 248D	FS-248D	Layer 2/3 FortiGate switch controller compatible switch with 48 GE RJ45 + 4 SFP ports.
FortiSwitch 248E-POE	FS-248E-POE	Layer 2/3 FortiGate switch controller compatible PoE+ switch with 48 GE RJ45 + 4 SFP ports, 24 port PoE with maximum 370 W limit.
FortiSwitch 248E-FPOE	FS-248E-FPOE	Layer 2/3 FortiGate switch controller compatible PoE+ switch with 48 GE RJ45 + 4 SFP ports, 48 port PoE with maximum 740 W limit.
FortiSwitch 424E-Fiber	FS-424E-Fiber	Layer 2/3 FortiGate switch controller compatible switch with 24x GE SFP and 4x 10 GE SFP+ Uplinks
FortiSwitch M426E-FPOE	FS-M426E-FPOE	Layer 2/3 FortiGate switch controller compatible switch with 16x GE RJ45 PoE 802.3af/at, 8x 2.5 RJ45 PoE 802.3af/at/UPOE (60W), 2x 5 GE RJ45 and 4x 10 GE SFP+, with maximum 420 W PoE limit.
FortiSwitch 424E	FS-424E	Layer 2/3 FortiGate switch controller compatible switch with 24 GE RJ45, 4x 10 GE SFP+ ports.
FortiSwitch 424E-POE	FS-424E-POE	Layer 2/3 FortiGate switch controller compatible switch with 24 GE RJ45, 4x 10 GE SFP+ ports, 24 port PoE+ with maximum 283.5 W limit.
FortiSwitch 424E-FPOE	FS-424E-FPOE	Layer 2/3 FortiGate switch controller compatible switch with 24 GE RJ45, 4x 10 GE SFP+ ports, 24 port PoE+ with maximum 433.7 W limit.
FortiSwitch 448E	FS-448E	Layer 2/3 FortiGate switch controller compatible switch with 48 GE RJ45, 4x 10 GE SFP+ ports.
FortiSwitch 448E-POE	FS-448E-POE	Layer 2/3 FortiGate switch controller compatible switch with 48 GE RJ45, 4x 10 GE SFP+ ports, 48 port PoE+ with maximum 421 W limit.
FortiSwitch 448E-FPOE	FS-448E-FPOE	Layer 2/3 FortiGate switch controller compatible switch with 48 GE RJ45, 4x 10 GE SFP+ ports, 48 port PoE+ with maximum 772 W limit.



Ordering Information

Product	SKU	Description
FortiSwitch Models		
FortiSwitch 524D	FS-524D	Layer 2/3 FortiGate switch controller compatible switch with 24 GE RJ45, 4× 10 GE SFP+ and 2× 40 GE QSFP+ ports.
FortiSwitch 524D-FPOE	FS-524D-FPOE	Layer 2/3 FortiGate switch controller compatible PoE+ switch with 24 GE RJ45, 4× 10 GE SFP+, 2× 40 GE QSFP+ ports, 24 port PoE with maximum 400 W limit.
FortiSwitch 548D	FS-548D	Layer 2/3 FortiGate switch controller compatible switch with 48 GE RJ45, 4× 10 GE SFP+ and 2× 40 GE QSFP+ ports.
FortiSwitch 548D-FPOE	FS-548D-FPOE	Layer 2/3 FortiGate switch controller compatible PoE+ switch with 48 GE RJ45, 4× 10 GE SFP+ and 2× 40 GE QSFP+ ports, 48 port PoE with maximum 750 W limit.
Licenses		
FortiLAN Cloud Management License*	FC-10-FSW00-628-02-DD	FortiSwitch 100 Series (none-Rugged) FortiLAN Cloud Management SKU Including Forticare 24×7. (Note, FortiCare only applicable when used with FortiLAN Cloud)
	FC-10-FSW10-628-02-DD	FortiSwitch 200-400 Series (incl all FSW Rugged Models) FortiLAN Cloud Management SKU Including Forticare 24×7. (Note, FortiCare only applicable when used with FortiLAN Cloud)
	FC-10-FSW20-628-02-DD	FortiSwitch 500-900 Series FortiLAN Cloud Management SKU Including Forticare 24×7. (Note, FortiCare only applicable when used with FortiLAN Cloud)
FortiSwitch Manager Subscription License	FC1-10-SWMVM-258-01-DD	Subscription license for 10 FortiSwitch Units managed by FortiSwitchManager VM. 24×7 FortiCare support (for FSWM VM) included.
	FC2-10-SWMVM-258-01-DD	Subscription license for 100 FortiSwitch Units managed by FortiSwitchManager VM. 24×7 FortiCare support (for FSWM VM) included.
	FC3-10-SWMVM-258-01-DD	Subscription license for 1000 FortiSwitch Units managed by FortiSwitchManager VM. 24×7 FortiCare support (for FSWM VM) included.
FortiSwitch Advanced Features License	FS-SW-LIC-200	SW License for FS-200 Series Switches to activate Advanced Features.
	FS-SW-LIC-400	SW License for FS-400 Series Switches to activate Advanced Features.
	FS-SW-LIC-500	SW License for FS-500 Series Switches to activate Advanced Features.
Accessories		
External Redundant AC Power Supply	FRPS-740	Redundant AC power supply for up to 2 units: FS-224D-FPOE, FS-224E-POE, FS-248E-POE, FS-248E-FPOE.
Redundant AC Power Supply	FS-PSU-150	AC power supply for FS-548D and FS-524D.
	FS-PSU-600	AC power supply for FS-524D-FPOE.**
	FS-PSU-920	AC power supply for FS-548D-FPOE.**

* When managing a FortiSwitch with a FortiGate via FortiGate Cloud, no additional license is necessary.

** Provides additional PoE capacity.

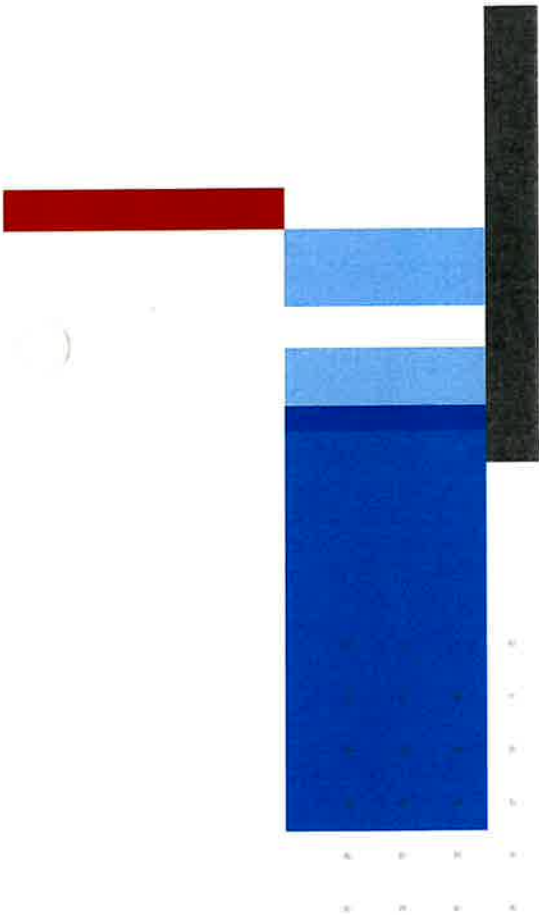
For details of Transceiver modules, see the [Fortinet Transceivers datasheet](#).

Note that all PoE FortiSwitches are Alternative-A.

Fortinet CSR Policy

Fortinet is committed to driving progress and sustainability for all through cybersecurity, with respect for human rights and ethical business practices, making possible a digital world you can always trust. You represent and warrant to Fortinet that you will not use Fortinet's products and services to engage in, or support in any way, violations or abuses of human rights, including those involving illegal censorship, surveillance, detention, or excessive use of force. Users of Fortinet products are required to comply with the [Fortinet EULA](#) and report any suspected violations of the EULA via the procedures outlined in the [Fortinet Whistleblower Policy](#).





1	2	3	4	5	6	7	8	9	10	11	12	13	14	15	16	17	18	19	20	21	22	23	24	25	26	27	28	29	30	31	32	33	34	35	36	37	38	39	40	41	42	43	44	45	46	47	48	49	50	51	52	53	54	55	56	57	58	59	60	61	62	63	64	65	66	67	68	69	70	71	72	73	74	75	76	77	78	79	80	81	82	83	84	85	86	87	88	89	90	91	92	93	94	95	96	97	98	99	100
---	---	---	---	---	---	---	---	---	----	----	----	----	----	----	----	----	----	----	----	----	----	----	----	----	----	----	----	----	----	----	----	----	----	----	----	----	----	----	----	----	----	----	----	----	----	----	----	----	----	----	----	----	----	----	----	----	----	----	----	----	----	----	----	----	----	----	----	----	----	----	----	----	----	----	----	----	----	----	----	----	----	----	----	----	----	----	----	----	----	----	----	----	----	----	----	----	----	----	-----

FORTINET

www.fortinet.com

Copyright © 2023, Fortinet, Inc. All rights reserved. Fortinet®, FortiGate®, FortiOS®, and FortiGuard® are registered trademarks of Fortinet, Inc. and other Fortinet marks herein may also be registered and/or common law trademarks of Fortinet. All other product or company names may be trademarks of their respective owners. Performance and other metrics contained herein may be obtained at different intervals, under ideal conditions, and actual performance and other results may vary. Performance is based on different network environments and different conditions may affect performance results. Nothing herein represents any binding commitment by Fortinet, and Fortinet disclaims all warranties, whether explicit or implied, except to the extent specifically stated in a Fortinet written contract. Fortinet's General Counsel, with a purchase order, expressly warrants that the exhibited product will perform according to certain expressly identified performance metrics and in such event only the specific performance metrics identified herein shall be enforceable. For absolute clarity, any such warranty will be limited to performance in the same ideal conditions as in Fortinet's internal lab tests. Fortinet disclaims all other warranties, representations, and guarantees, express or implied, in this publication without notice, and the most current version of the publication shall be applicable.

July 11, 2023

